

Design Resource

## Mirror Key Chain - Bijapur

Making Mirror Key Chain

by

Prof. Bibhudutta Baral, Divyadarshan C. S. and

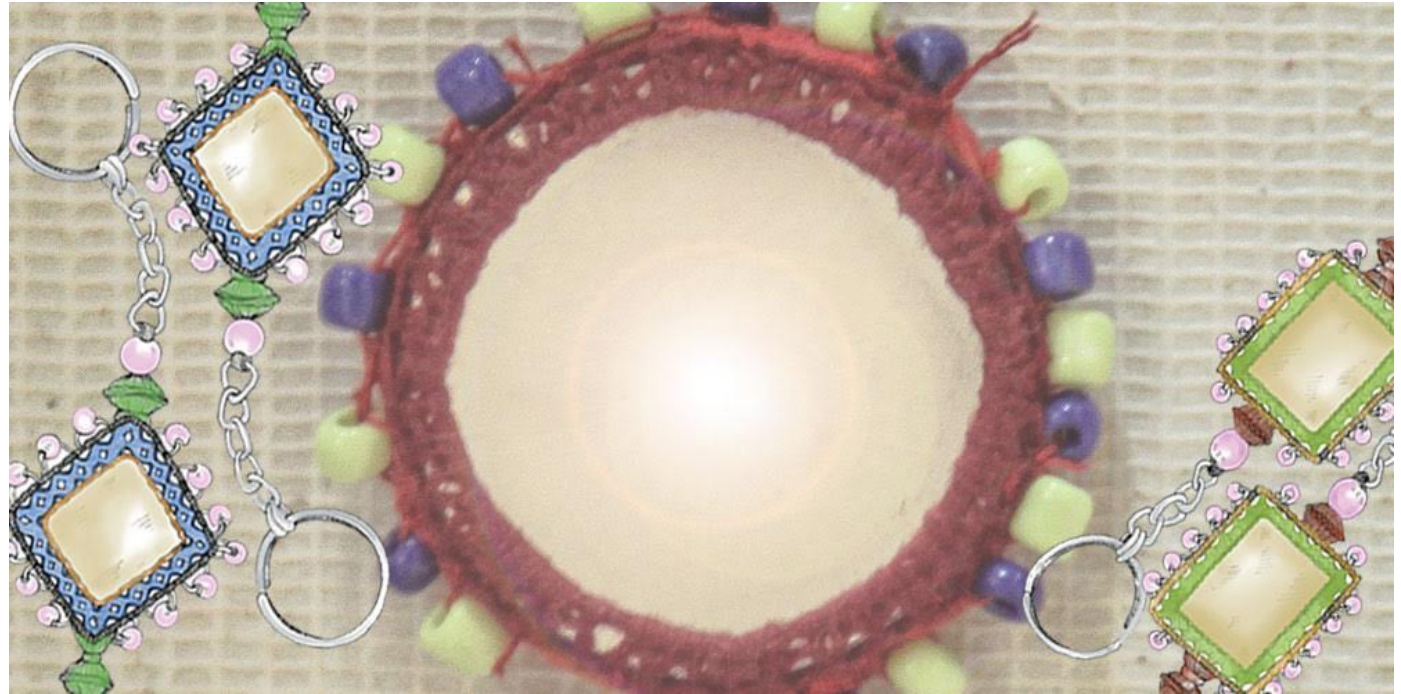
Lija M. G.

NID Campus, Bengaluru

Source:

<http://www.dsource.in/resource/mirror-key-chain-bijapur>

1. Introduction
2. Tools and Raw Materials
3. Making Process
4. Products
5. Contact Details



Design Resource

## Mirror Key Chain - Bijapur

Making Mirror Key Chain

by

Prof. Bibhudutta Baral, Divyadarshan C. S. and

Lija M. G.

NID Campus, Bengaluru

Source:

<http://www.dsource.in/resource/mirror-key-chain-bijapur/introduction>

## Introduction

Mirror is one of the objects that usually reflect light in such a way that preserves much of its unique quality that reflects light striking the plane mirror. Plane mirrors are used as looking glass and are used in constructing periscope. Banjara/ Lambani is one of the community's embroidery work that is inspired in making of the mirror key chains, one of the creative works of the people of Bijapur, Karnataka, who are adopting changes along with regular work to creating various patterns. These people live in the city/ rural regions of Bijapur.

People of the Lambadi community along with other community who lived around the dam of Almatti had to shift their dwelling places along with all their belongings, agricultural fields and all related to them which left them once upon a time jobless at hand. Traditional art of Embroidery was one of craft that supported the people in this area for survival.

Mirror key chain making was inspired from the mirror work of the Lambani/ Banjara community people as some of this people presently do not wear them regularly but mostly during occasions. As mirror work on their dresses reflected and brought a glitter effect to their dress material, hence they are specially made for their daughters in sending them for their marriages. They have adopted the same technique in another manner into key chains of various sizes and shapes.

Key chains are generally small chains made from plastic, metal that attaches a small item to the key ring. Some of the key chain allows one or both ends to rotate easily keeping the chains from being used. It is a connecting ring between the key ring and belt of the individual, especially in use where there is frequently use of key's.

As it is unsafe nowadays to live the house doors without locking, due which a person will have to carry the keys along with them where ever they go. The different coloured pattern key chains helps an individual in recognizing different keys used within a house or organization. Chains of the key ensure an individual that the keys are attached on any wear and tear of their pockets/ bags.



Mirror key chain is embellished with colorful beads.

1. Introduction
2. Tools and Raw Materials
3. Making Process
4. Products
5. Contact Details

Design Resource

## Mirror Key Chain - Bijapur

Making Mirror Key Chain

by

Prof. Bibhudutta Baral, Divyadarshan C. S. and

Lija M. G.

NID Campus, Bengaluru

Source:

<http://www.dsource.in/resource/mirror-key-chain-bijapur/introduction>

### 1. Introduction

### 2. Tools and Raw Materials

### 3. Making Process

### 4. Products

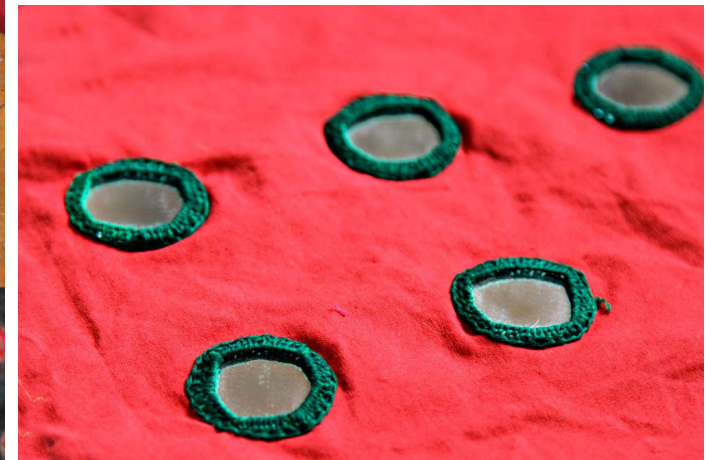
### 5. Contact Details



Craftsmen stitching mirrors to the fabric and embroidering each of them.



Embroidered mirrors are stitched with small beads and kept.



Sphere shaped mirrors are embroidered to the fabric.

Design Resource

## Mirror Key Chain - Bijapur

Making Mirror Key Chain

by

Prof. Bibhudutta Baral, Divyadarshan C. S. and

Lija M. G.

NID Campus, Bengaluru

Source:

<http://www.dsource.in/resource/mirror-key-chain-bijapur/tools-and-raw-materials>

1. Introduction

2. **Tools and Raw Materials**

3. Making Process

4. Products

5. Contact Details

## Tools and Raw Materials

The process of mirror key chain requires the following tools and raw materials:

- **Cotton Thread:** Cotton threads are generally preferred for sewing.
- **Plastic Beads:** Beads of various sizes with contrasting colours are generally preferred for embellishing.
- **Mirror Piece (approximately of one inch):** Mirror of round shape with diameter of one inch is generally preferred.
- **Thimble:** It is hard pitted cup that is generally worn around the finger to push the needle.
- **Sewing Needle:** It is used to pull thread through the fabric.
- **Cotton Fabric:** It is generally preferred for stitching the mirror with a pattern on to it.
- **Thread Cutter:** It is used to cut the extra threads after stitching.
- **Small Sized Bells:** It is used generally to enhance the key chain with a different sounding system.



Mirrors cut out in different shapes and sizes.

Design Resource

## Mirror Key Chain - Bijapur

Making Mirror Key Chain

by

Prof. Bibhudutta Baral, Divyadarshan C. S. and

Lija M. G.

NID Campus, Bengaluru

Source:

<http://www.dsource.in/resource/mirror-key-chain-bijapur/tools-and-raw-materials>

1. Introduction

2. **Tools and Raw Materials**

3. Making Process

4. Products

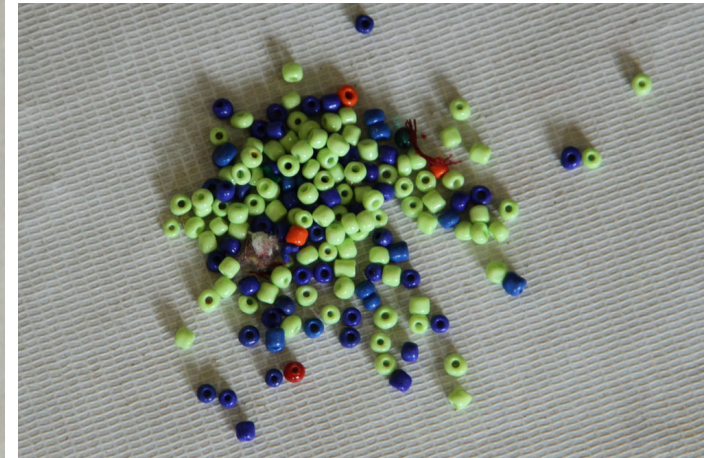
5. Contact Details



Cutter used for cutting the thread while stitching.



Cotton fabric is used as a base on which the mirror pieces are stitched and embroidered.



Colorful beads are used to decorate the key chain.

Design Resource

## Mirror Key Chain - Bijapur

Making Mirror Key Chain

by

Prof. Bibhudutta Baral, Divyadarshan C. S. and

Lija M. G.

NID Campus, Bengaluru

Source:

<http://www.dsource.in/resource/mirror-key-chain-bijapur/tools-and-raw-materials>



Different shades of threads are used to embroider the mirror pieces.



Key chain is attached to the embroidered mirror.



Thimble is worn for protection on the index finger that pushes the needle while sewing.

1. Introduction

2. **Tools and Raw Materials**

3. Making Process

4. Products

5. Contact Details

Design Resource

## Mirror Key Chain - Bijapur

Making Mirror Key Chain

by

Prof. Bibhudutta Baral, Divyadarshan C. S. and  
Lija M. G.

NID Campus, Bengaluru

Source:

<http://www.dsource.in/resource/mirror-key-chain-bijapur/making-process>

## Making Process

Mirrors bought from market are cut into round shapes of the various sizes of coins available, it varies from one inch to larger sizes in length. The mirrors are stitched on to the fabric with triangle then to the star shape on which the mirror work along with embroidery stitches are done with attractive colours of embroidery threads. After the mirror is firmly fixed on the fabric it is cut along with little part of fabric.

Two mirrors facing opposite to each other are placed and stitched together by placing the extra cloth inside. To the joined parts plastic beads of contrasting colours are stitched along alternately. Beads tied with coloured threads, bells are further attached to one another to obtain a creative pattern. Rings with extensions are attached to the chains and fixed on to the keys which are transported to various locations for sale.



Required shape of mirror is sewed on a desired color fabric.

1. Introduction
2. Tools and Raw Materials
3. **Making Process**
4. Products
5. Contact Details

Design Resource

## Mirror Key Chain - Bijapur

Making Mirror Key Chain

by

Prof. Bibhudutta Baral, Divyadarshan C. S. and

Lija M. G.

NID Campus, Bengaluru

Source:

<http://www.dsource.in/resource/mirror-key-chain-bijapur/making-process>



Mirrors are then embroidered with required pattern and thread.



Embroidered mirrors are cut out from the fabric and the excess fabric is stitched behind the mirror.



Two embroidered mirrors are attached together each facing opposite directions.



Beads are stitched which decorates the joined area.

1. Introduction
2. Tools and Raw Materials
3. **Making Process**
4. Products
5. Contact Details



Design Resource

## Mirror Key Chain - Bijapur

Making Mirror Key Chain

by

Prof. Bibhudutta Baral, Divyadarshan C. S. and

Lija M. G.

NID Campus, Bengaluru

Source:

<http://www.dsource.in/resource/mirror-key-chain-bijapur/making-process>

1. Introduction
2. Tools and Raw Materials
3. **Making Process**
4. Products
5. Contact Details



Different colors of beads are stitched intricately to the mirrors.



Embroidered mirror with beads is ready for the key chain.

Design Resource

## Mirror Key Chain - Bijapur

Making Mirror Key Chain

by

Prof. Bibhudutta Baral, Divyadarshan C. S. and

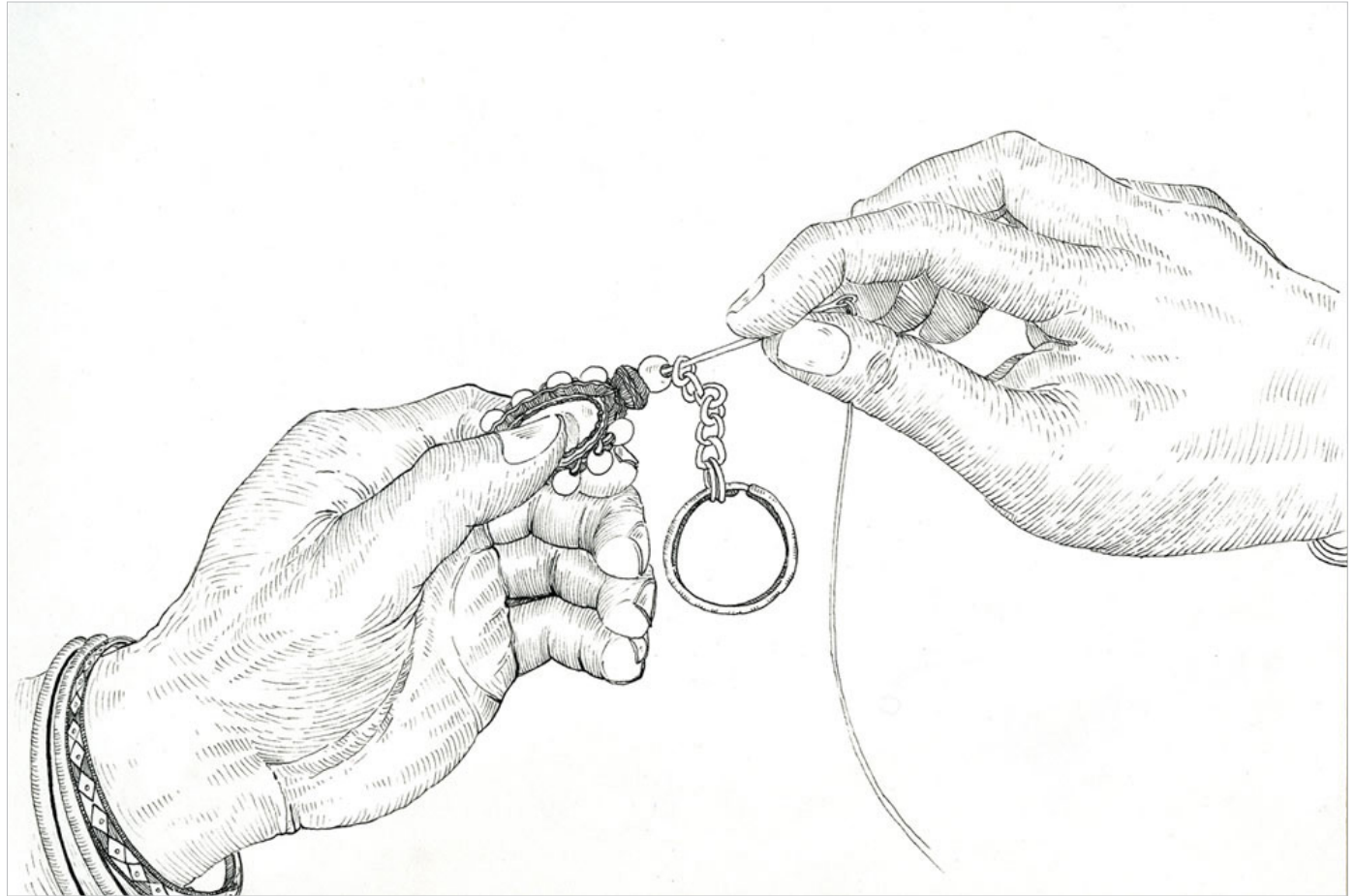
Lija M. G.

NID Campus, Bengaluru

Source:

<http://www.dsource.in/resource/mirror-key-chain-bijapur/making-process>

1. Introduction
2. Tools and Raw Materials
3. **Making Process**
4. Products
5. Contact Details



Key chain is then attached to the embroidered mirror at the end with a thread.

Design Resource

## Mirror Key Chain - Bijapur

Making Mirror Key Chain

by

Prof. Bibhudutta Baral, Divyadarshan C. S. and

Lija M. G.

NID Campus, Bengaluru

Source:

<http://www.dsource.in/resource/mirror-key-chain-bijapur/making-process>

1. Introduction
2. Tools and Raw Materials
3. **Making Process**
4. Products
5. Contact Details



Process of a mirror transforming into an embroidered mirror key chain.

Design Resource

## Mirror Key Chain - Bijapur

Making Mirror Key Chain

by

Prof. Bibhudutta Baral, Divyadarshan C. S. and  
Lija M. G.

NID Campus, Bengaluru

Source:

<http://www.dsource.in/resource/mirror-key-chain-bijapur/products>

## Products

Mirror key chains with contrasting colours of beads and threads are generally preferred for its making. The size varies as per the style and the length of the pattern required, the cost of the key chain varies from about Rs 40 to Rs 60. Based on the size of the mirror, type of design and the cost of the mirror key chain varies. This is one of the unique product specially made at Bijapur.



Embroidered key chain decorated with beads.

1. Introduction
2. Tools and Raw Materials
3. Making Process
4. **Products**
5. Contact Details

Design Resource

## Mirror Key Chain - Bijapur

Making Mirror Key Chain

by

Prof. Bibhudutta Baral, Divyadarshan C. S. and

Lija M. G.

NID Campus, Bengaluru

Source:

<http://www.dsource.in/resource/mirror-key-chain-bijapur/products>



Illustration of a diamond shaped decorative key chain.



Triangle shape mirror key chain embroidered with orange color thread and decorated with beads.



Square shaped embroidered mirror key chain.

1. Introduction
2. Tools and Raw Materials
3. Making Process
4. **Products**
5. Contact Details

Design Resource

## Mirror Key Chain - Bijapur

Making Mirror Key Chain

by

Prof. Bibhudutta Baral, Divyadarshan C. S. and

Lija M. G.

NID Campus, Bengaluru

### Source:

<http://www.dsource.in/resource/mirror-key-chain-bijapur/contact-details>

1. Introduction
2. Tools and Raw Materials
3. Making Process
4. Products
5. **Contact Details**

## Contact Details

This documentation was done by Prof. Bibhudutta Baral, Divyadarshan C. S. and Lija M. G. at [NID Campus, Bengaluru](#).

You can get in touch with

- Prof. Bibhudutta Baral at [bibhudutta\[at\]nid.edu](mailto:bibhudutta[at]nid.edu)

You could write to the following address regarding suggestions and clarifications:

### Helpdesk Details:

Co-ordinator

Project e-kalpa

R & D Campus

National Institute of Design

#12 HMT Link Road, Off Tumkur Road

Bengaluru 560 022

India

Phone: +91 80 2357 9054

Fax: +91 80 23373086

Email: [dsource.in\[at\]gmail.com](mailto:dsource.in[at]gmail.com)