

DESIGN RESEARCH SEMINAR

Report

Life on a Footpath



Nikita Fatarpekar

Industrial Design -176130014

IDC IIT Bombay

Under the supervision of Prof. Ravi Poovaiah

Approval

Design Research Seminar

Life on a Footpath

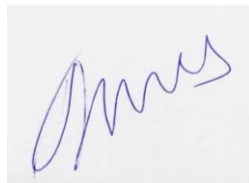
Name: Nikita Fatarpekar

Roll no: 176130014

Department: M.Des in Industrial Design

Batch: 2017- 2019

Is approved as a partial fulfillment of a requirement of a post graduate degree in
Industrial design at IDC, IIT Bombay

A handwritten signature in blue ink, appearing to read 'Nikita', is centered on a light gray rectangular background.

Project guide

Content

Essays	Page no
I. Abstract	3
II. Research Methodology	4
III. Definition	5
IV. Types of Footpath	6
V. Rural India Footpaths	7
VI. Urban India Footpaths	8
VII. Comparative analysis	10
VIII. References	11

All the Photographs used in the report are clicked by Nikita Fatarpekar.

Abstract

The Study of life on footpath has been studied to be sensitive to the functions and activities carried out on footpath. To understand how space, time, social culture and thoughts affect the view of a footpath. It has been observed that various places have different ways of using a footpath based on the user.

To some it's a home while others are not affected by its absence.

In different context of the same footpath can be differently pursued. In some it may be a multipurpose way while some where it just exists.

The form of footpaths in various place has been observed and studied in Pure form trying to understand it function, uses as well as non uses.

Research Methodology

Evaluation research texts how a particular space works or compares several spaces. Spaces built and how it worked.

Type of research: Basic Behavioral evaluation

Basic, also known as fundamental or Pure: Done without any intention on part of the researcher of solving some practical problem.

Behavioral Research – Naturalistic Observation – because it involves subjects in their usual habitats involves unobtrusive observation.

Evaluation in terms of **Comparison Studies**.

A **random sample** of spaces in different places have been chosen and evaluated on the basis of comparison.

A **Non-Reactive** way in which people in a study do not react to the fact that they are in a study as they are mostly like aware of it.

As this is a **Space Evaluation**: The **Subjective Impressions** would be the reaction of the observer leading to Performance Observations wherein adequacy of display controls, arrangement to compare requirement. Also to observe the flow of people.

Definition of Footpath

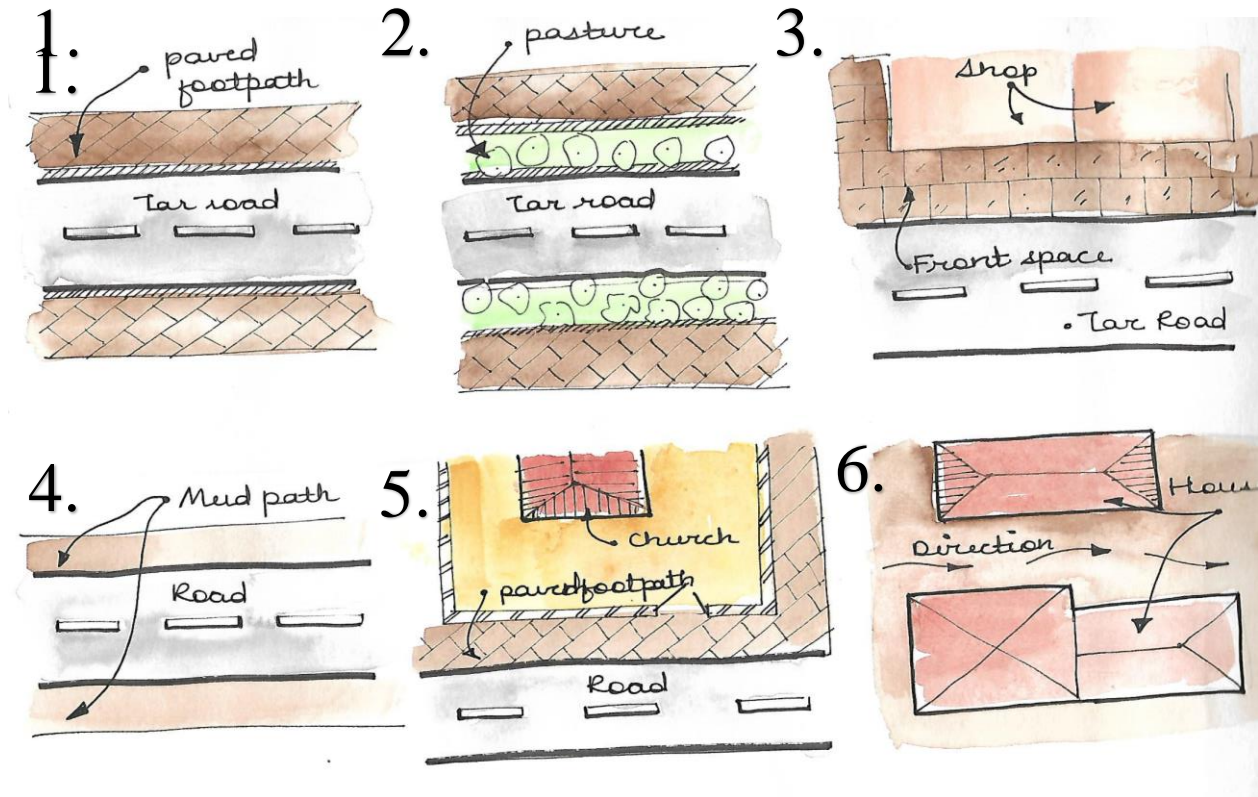
1. Footpath definition according to Oxford Dictionary:
 - a path for people to walk along, especially a right of way in the countryside.
 - a path for pedestrians in a built-up area; a pavement.
2. According to Cambridge Dictionary:
 - a path for walking
3. According to Macmillan Dictionary:
 - Pavement
4. According to Merriam Webster
 - a narrow path for pedestrians
5. According to Thesaurus Dictionary
 - a path for people going on foot.
 - Footway
6. According to Wikipedia:
 - A footpath (also pedestrian way) is a type of thoroughfare that is intended for use only by pedestrians and no other forms of traffic such as motorized vehicles, cycles, and horses. They can be found in a wide variety of places, from the center of cities, to farmland, to mountain ridges. Urban footpaths are usually paved, may have steps.
 - Conservation areas and other protected areas may have footpaths (trails) that are restricted to pedestrians.
 - A footpath can also take the form of a footbridge, linking two places across a river.

History of footpath: originally created by people across the land to work, market, next village etc.

Rules of footpath - Right of a way: refers to paths on which the public have a legally protected right to pass and re-pass.

Types of Footpath

There are various kinds of footpath across the world such as permissive paths, Scot ways, bridleways, byways, towpaths, and green lanes. The kinds of footpath observed in India are as:

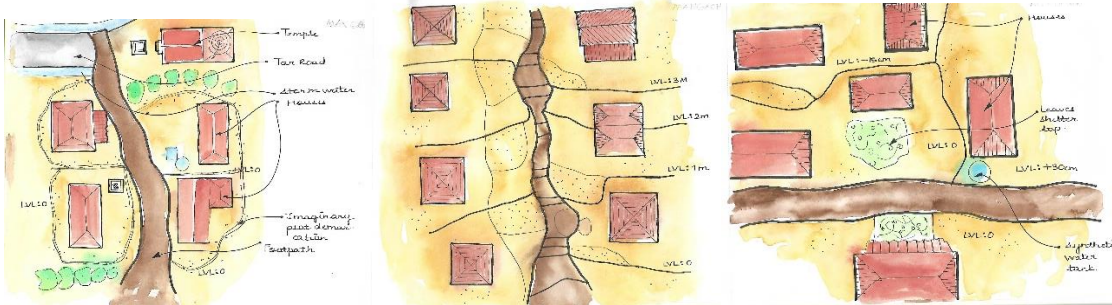


1. Road – paved: a tar road at the centre with paved footpath along both the sides.
2. Road –pasture – paved: a tar road at the center with pasture column parallel to a paved footpath along both the sides.
3. Road – Set back: the shop front space which is sometimes a setback is directly attached to parallel running road is used as footpath.
4. Mud footpath: a tar road running on a ground, over a period of time people walking on it become a mud clay footpath.
5. Compound footpath: A precinct comprising a compound wall along which is a pavement runs along which is used as a footpath.
6. Mud stone footpath: several times in a village setup where houses are close to each, the space between them becomes the footpath for the resident.

Rural India Footpaths

In the village of Mangaon, Konkan district there is demarcation of property but the footpath can be easily identified (Image & Dia. 1.a.). Whereas The Adivasi village of Mangaon has a footpath that has been derived natural from the ridges formed from rainy water flow (Image & Dia. 1.b.).

The village of Mokhada one can see flat lands with a height difference of 30 cm from one house to other. There is no proper demarcation of either boundary or compound as the footpaths are also being used as vehicular paths. Most of the community functions are held in the space between the house and forms a common ground of celebrations (Image & Dia. 1.c.).



Dia. 1.a.

Dia. 1.b.

Dia. 1.c.



Image 1.a.

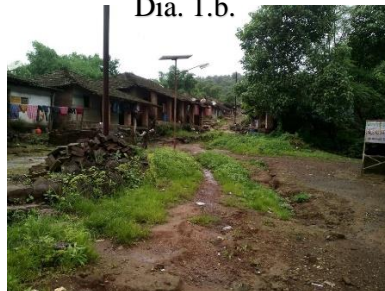


Image 1.b.

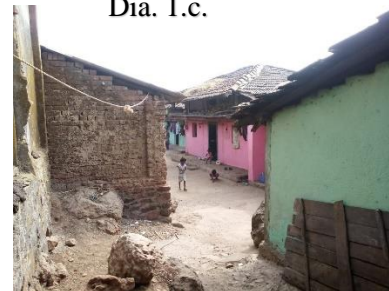
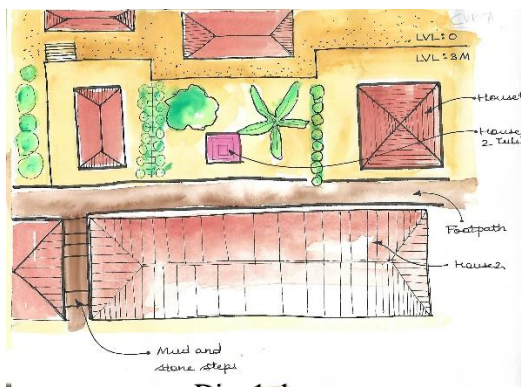
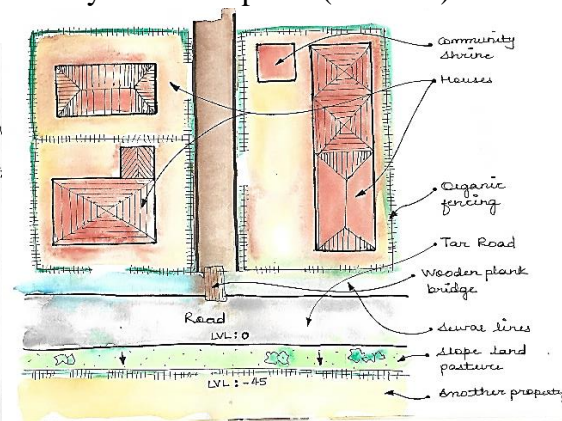


Image 1.c.

The village of Curca in Goa has the footpath running from middle of the plot in between the house and the courtyard comprising of Tulsi (Dia. 1.d.). In the village of Innbhatti, eastern part of Maharashtra, the houses have an weed plant as their compound wall which also demarcates their property. The spaces between them usually mark as the footpath for the residents, as shown in the diagram 1.A., the tar road is accessible by a wooden plank bridge (Dia. 1.e.)



Dia. 1.d.



Dia. 1.e.

Urban Footpaths

Urban Settlements have the footpath well demarcated using paved surface or concrete slabs. The footpath at times part of a property and serves only that building. Some according to the right to way are accessible to all and have multiple functions performed.

The Footpath have so many vehicles parked that it is very difficult to walk on it. There are apparently no strict rules and punishment for parking on the footpath. Most of the multinational companies have rented bicycle which parked on the footpath. Also these become a soul property of the company and very few others walk on these footpaths. Angular parking also occupies a large space on the footpath. One such example is in Bangalore (Image 2.a. & b.).

Most of the Market area footpath are broken (such as a concrete pavement has dents or a paved tile is missing). These footpaths can be dangerous as they have exposed reinforcement and hence walking on road is much safer. Commercial markets of Mumbai are mostly broken (Image 2.c.).



Image. 2.a.



Image. 2.b.



Image. 2.c.

A few footpaths are so narrow either because of the pasture that has grown over it or shops are built over it leaving a less than a foot size to walk for the pedestrian. These small areas in front of the shop make it a frontage zone for the shop and the adjacent footpath areas become halting/ waiting spaces as it doesn't form a continuous footpath.

Most commonly observed scene is the presence of electric poles along the road on footpath. This also makes it inconvenient for the passers-by to walk on the foot paths. Another such object is garbage bin that just doesn't occupy an area but the space as people do not even wish to pass by it. The grass that was cut while building the pavement or else the grass just besides the pavement s grows and over grows covering the footpath. (Image 2.d.,e. &f.).



Image. 2.d.



Image. 2.e.



Image. 2.f.

Footpaths built without the norms of building footpath make it difficult for the user to access and choose over road. Most commonly seen issue is the height of the footpath. The slope of the footpath can be at time be steep. A number of level differences in the footpaths can also be difficult to walk. Hence presence of a hump on road meant for crossing help in the safety of the people. (Image 2.g. & h.). taken at Pune

Railings on footpath is a measure of safety but passenger boarding the bus constantly look for buses while walking. These railing restrict the pedestrian movement. In many places one will find stray cattle and street dogs laying on the footpath.



Image. 2.g.



Image. 2.h.



Image. 2.i.

Presence of a shrine on a foot path adds a different scene to the movement. Passer by then pray to the deity. On the occasion of the deity birth anniversary the footpath forms a place of ritual. This is most commonly observed in Goa. (Image 2.k.).

Footpaths which function for dual purposes such as Panjim main market will in mornings are meant for open vegetable market for two hours. The next twelve hours serves the purpose for commercial parking while at night turns to a place for street food. The footpath in front of Ravindra bhavan Goa is for Interstate bus parking while in the evening serves the parking for crowd viewing in the auditorium. (Image 2.j. & l.).



Image. 2.j.



Image. 2.k.



Image. 2.l.

Comparative Analysis

The Footpaths in Urban and Rural settlement vary widely. Some of the distinct differences are as follows:

The urban footpaths have multiple uses and function for 24 hours a day while the footpaths in rural mentioned above there is a single use for pedestrian and is effective for few hours a day.

There are number of activities carried out on a footpath in cities and crowd moves in various directions while one can see a unidirectional on footpath in villages.

The function on footpath in village depend upon the socio- culture among the people. Its defined by the rituals and thought of as village amenities. Many celebrations are being carried through footpath and hence there is less scope of change.

In cities as the demand change constantly the lanes that do not have footpaths are urged to build pathways. These pathways develop over time and need. These are also being repaired frequently as many streets event keeps coming.

The constant change through nature such as rainfall, high tides, growth of weeds etc. the pattern of usage of same pathway varies.

The comfort of walk for a person also depends on the components present on the footpath which one of the similarity in rural and urban footpath. These components could be shady tree, railings or a shrine.

Books/ Article References

1. The night to my pavement? – Sameera Khan
2. Neighborhood diaries – footpath stories by rising voices
3. The life of a footpath Child – daily hunt (Saturday 17th March 2018)
4. Life on Mumbai footpath is better than in our drought hit village: Solapur family- Anil Rama Chavan, daily wage worker.
5. Sleeping under the stars on the footsteps of sultry Mumbai
6. Book excerpt India's broken trust by Tavleen Singh.
7. Story of Salman Sayyed by Anjali Bisaria.
8. "Spaces for people: human factors in design" by Bennett, Corwin.

Internet References

- <https://dictionary.cambridge.org/dictionary/english/footpath>
- <https://en.oxforddictionaries.com/definition/footpath>
- <https://www.merriam-webster.com/dictionary/footpath>
- <https://www.macmillandictionary.com/dictionary/british/footpath>
- <https://www.dictionary.com/browse/footpath>
- <https://en.wikipedia.org/wiki/Footpath>
- https://en.wikipedia.org/wiki/Rights_of_way_in_England_and_Wales