

Project 1

Bicycle scapes workshop

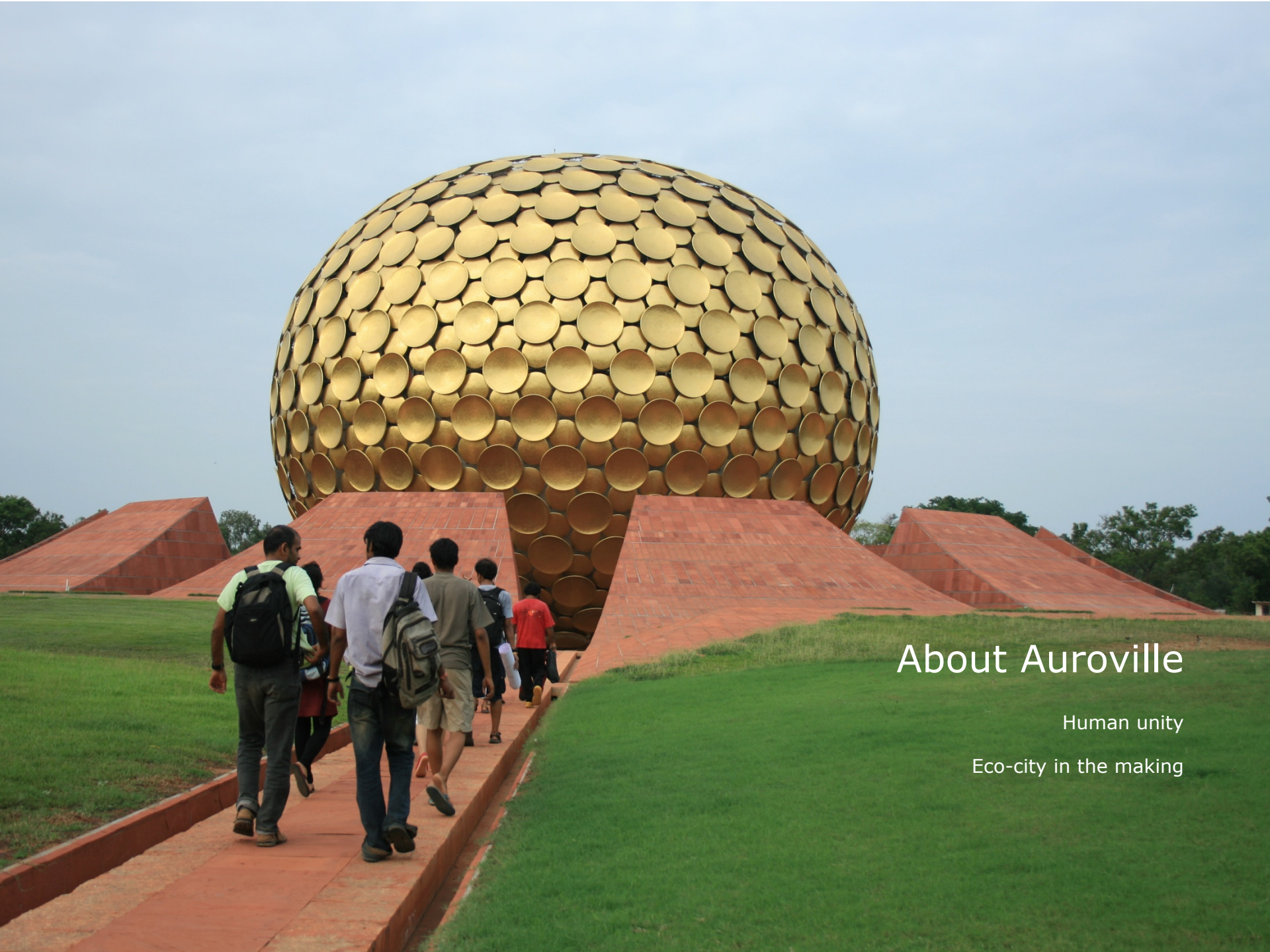
Place- Auroville

Duration- 1 month

Priyanka Marawar

IDC IIT Bombay 2009



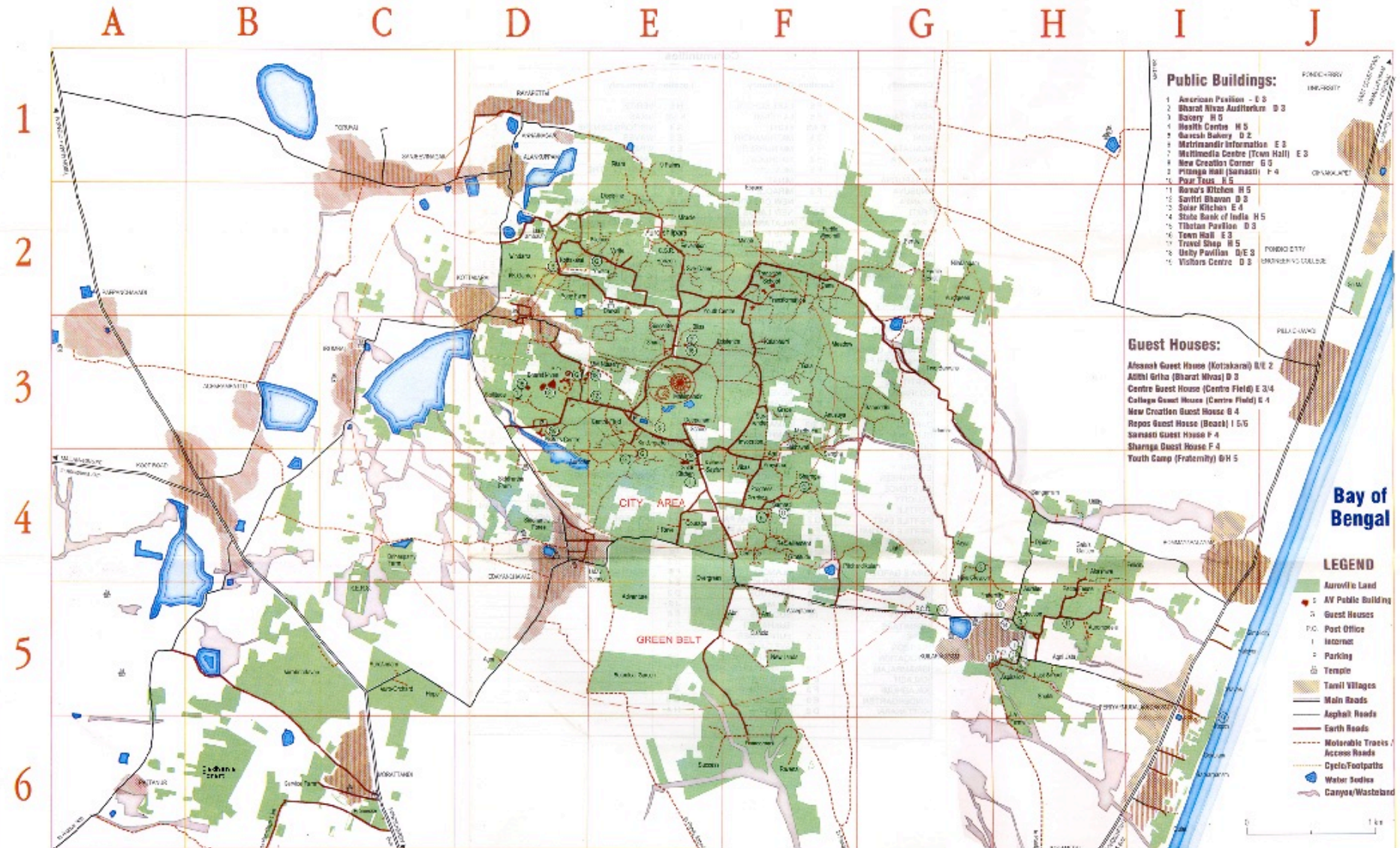


About Auroville

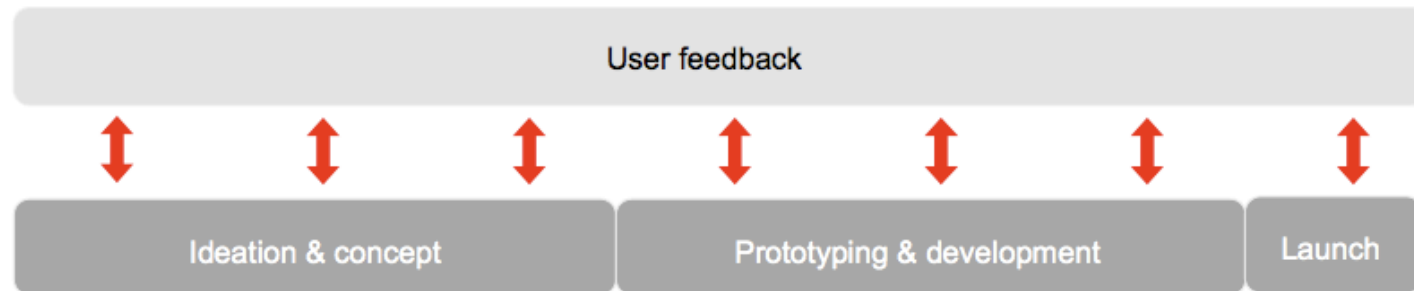
Human unity

Eco-city in the making

Map of the Auroville Area



User Centered Design Process



Continuous user inputs through out the product development life cycle

Week-1 : Orientation and Field research

Date	Early	Morning	Afternoon	Evening	
S 16 May			Arrival		
S 17 May		Arrival	Arrival		
M 18 May				Movie	
T 19 May	Option	Orientation and research			
W 20 May	Option				
T 21 May	Optional	Field research	Field research	AV Experience	
F 22 May		Field research	Field research		
S 23 May		Plenary presentations	Concept briefing B-3	Team dinner	
S 24 May		Free	Free		

Week-2 : Ideation and concepts

Date	Early	Morning	Afternoon	Evening	
M 25 May		Ideation	Ideation	Movie	
T 26 May	Optional	Ideation	Ideation		
W 27 May	Optional	Ideation and concepts			AV Experience
T 28 May	Optional				
F 29 May					
S 30 May		Plenary presentations	Design briefing B-4	Team dinner	
S 31 May		Free	Free		

Week-3 : Design

Date	Early	Morning	Afternoon	Evening	
M 1 Jun		Design	Design	Movie	
T 2 Jun	Optional	Detail design			
W 3 Jun	Optional			AV Experience	
T 4 Jun	Optional				
F 5 Jun		Design	Design		
S 6 Jun		Plenary presentations	Prototyping briefing B-5	Team dinner	
S 7 Jun		Free	Free		

Week-4 : Prototyping and construction

Date	Early	Morning	Afternoon	Evening	
M 8 Jun		Prototyping/Construction	Prototyping/Construction	Movie	
T 9 Jun	Optional	Construction			
W 10 Jun	Optional			AV Experience	
T 11 Jun	Optional				
F 12 Jun		Prototyping/Construction	Prototyping/Construction		
S 13 Jun		Plenary presentations	Demo briefing B-6	Team dinner	
S 14 Jun		Free	Free		

Week-5 : Presentation and Demo

Date	Early	Morning	Afternoon	Evening	
M 15 Jun		Demonstration - 16 June			Preparation
T 16 Jun				Closing dinner	
W 17 Jun					
T 18 Jun					





Research Method

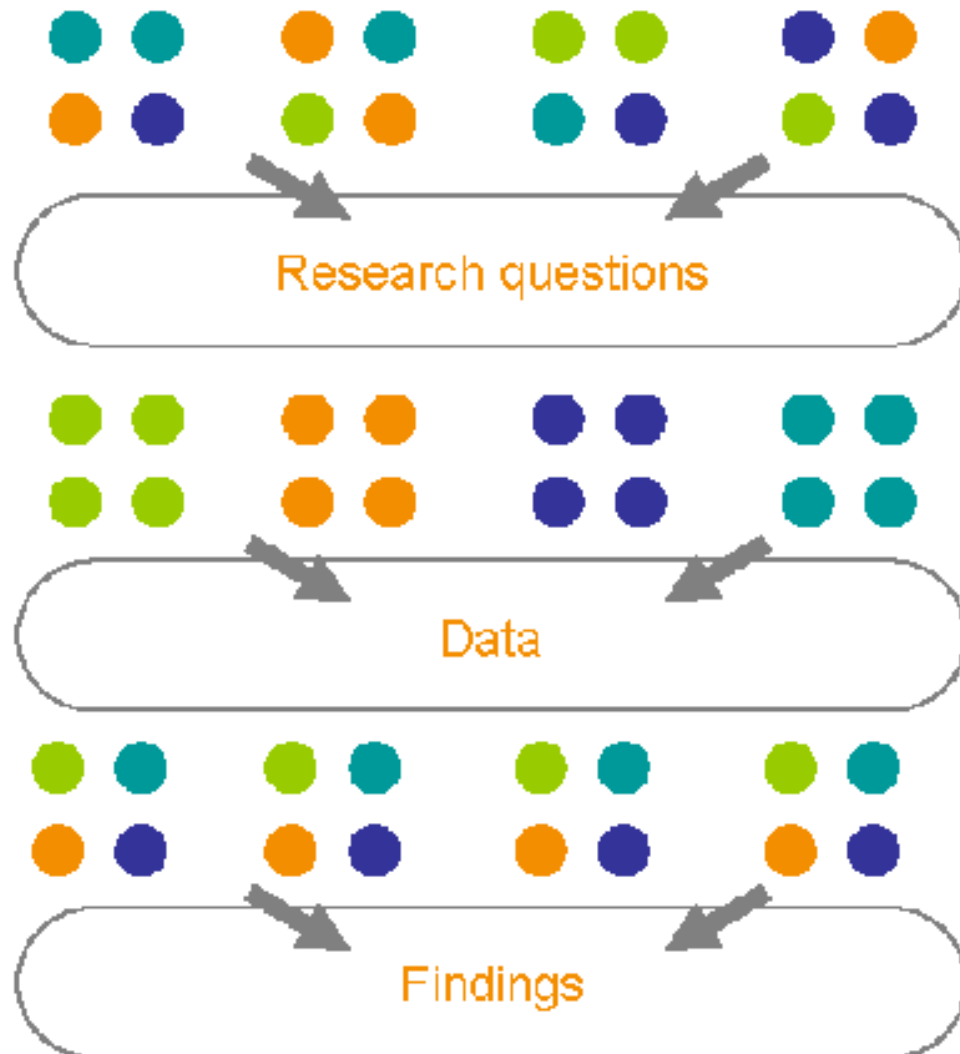




Photo observations



Spot Questionnaire 21/05/2025



Individual interviews

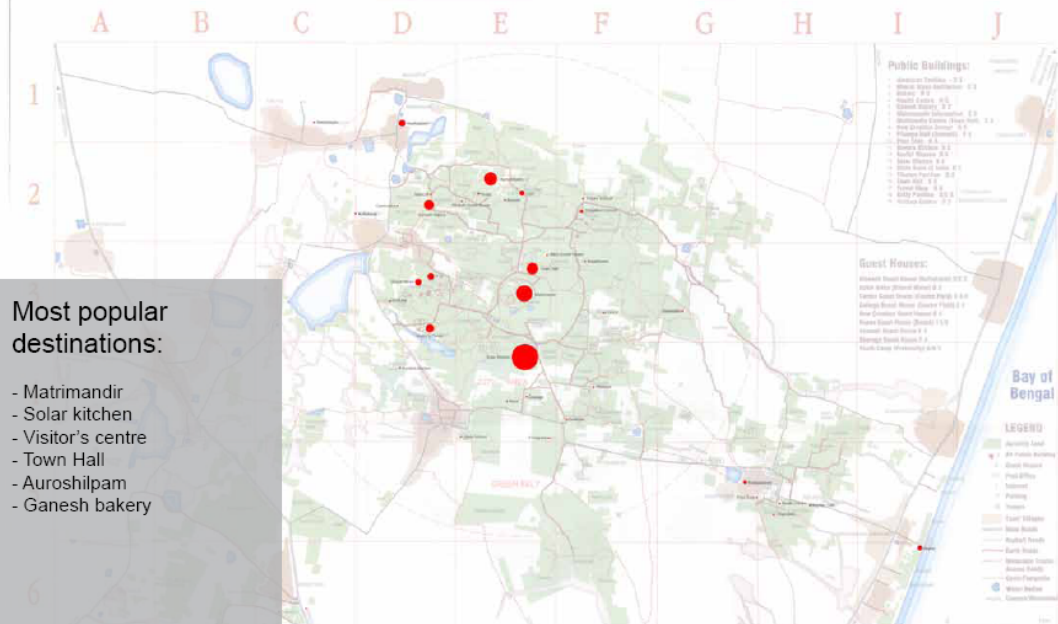


Focus Group

Research findings

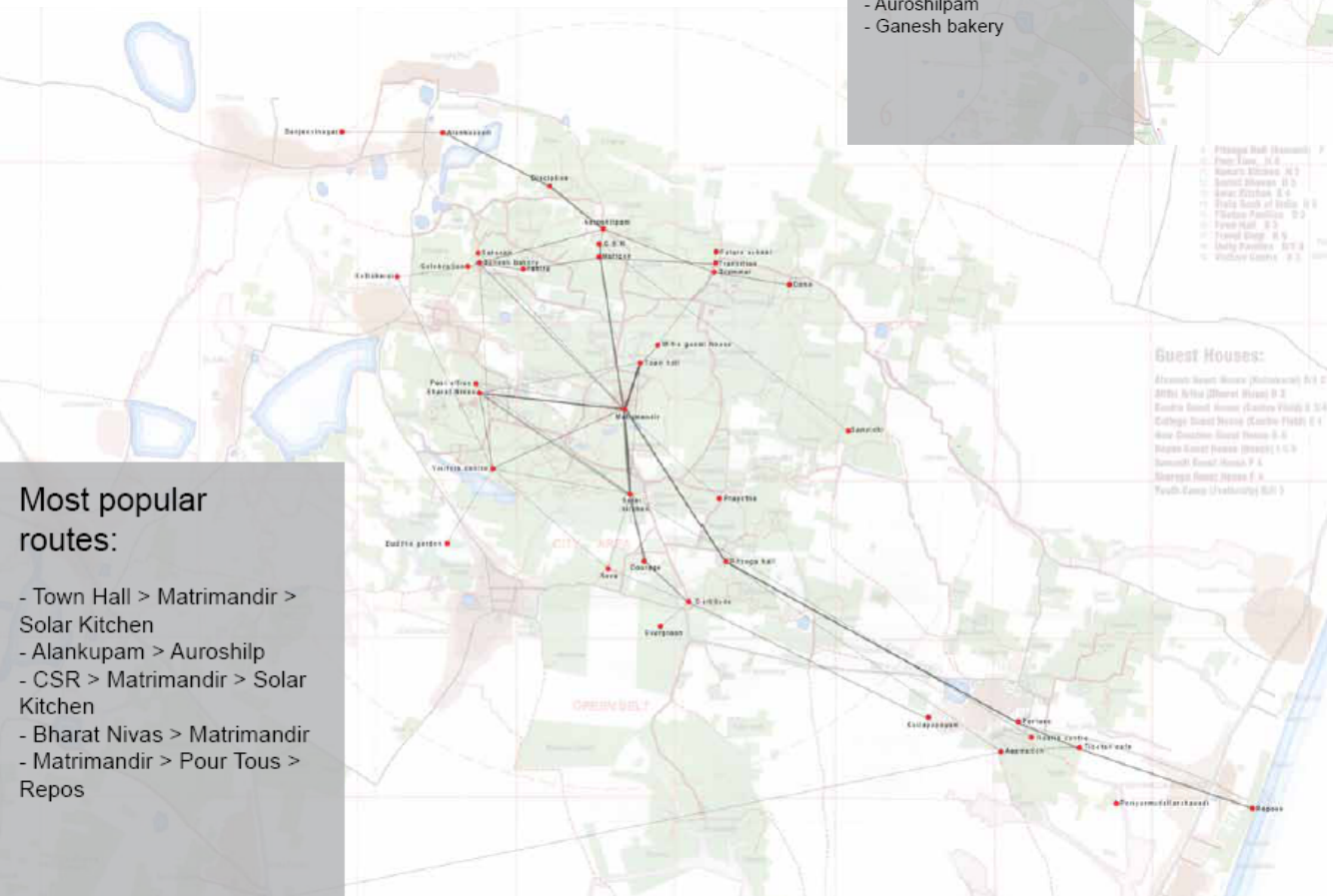
Routing, traffic and way-finding

Map of the Auroville Area



Most popular destinations:

- Matrimandir
- Solar kitchen
- Visitor's centre
- Town Hall
- Auroshilpam
- Ganesh bakery



Most popular routes:

- Town Hall > Matrimandir > Solar Kitchen
- Alankupam > Auroshilpam
- CSR > Matrimandir > Solar Kitchen
- Bharat Nivas > Matrimandir
- Matrimandir > Pour Tous > Repos



types of junctions

Other observations

- people cycling in from the villages
- people want some aloof routes (privacy)
- paths are not part of the holistic mobility plan
- routes that are aloof do not have light
- absence of two seperate lanes
- Wayfinding system is needed as multilingual and graphic based
- sorting/streamlining of traffic (at crossings) is needed
- absence of pedestrian paths



Environment, Weather, Paths and Shelters





Usage on the bicycle





Personas, emotions and expressions



Guests



Avid cyclists



Non cyclists



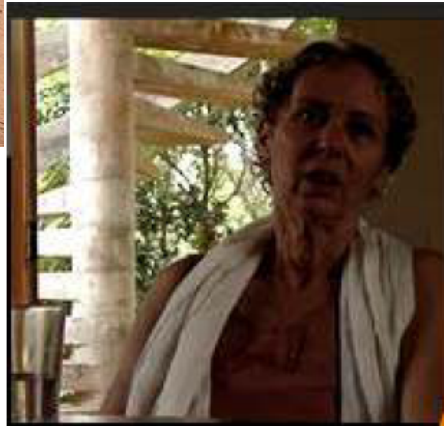
Functional cyclists

Passionate cyclists





"I hate riding at night. I just hate it."



"I cycle because im concerned about the environment and not because its good for my health."

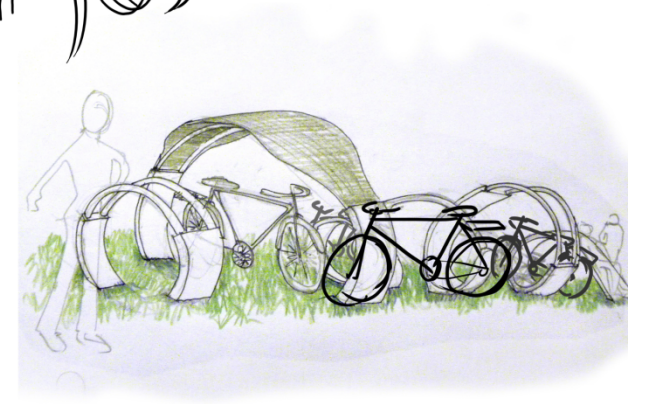
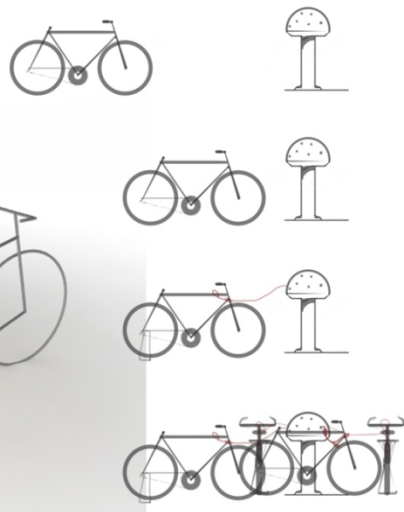
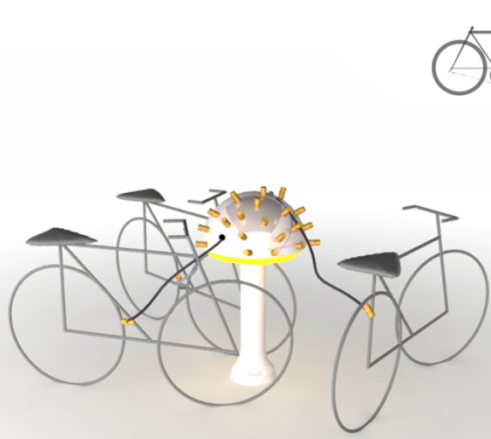
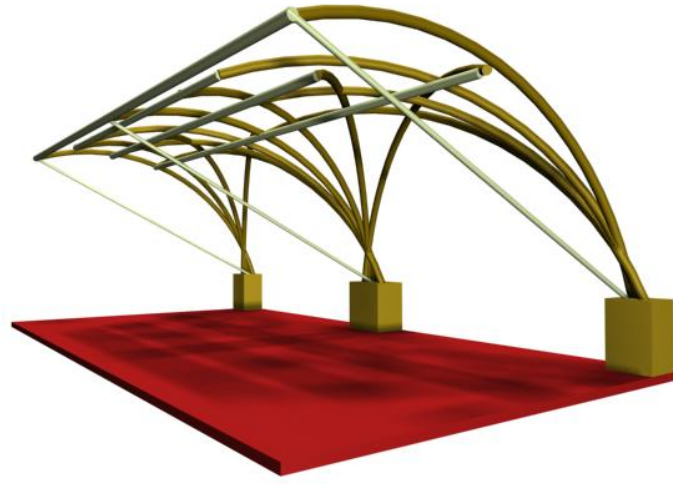
"Thorns are our only enemies"

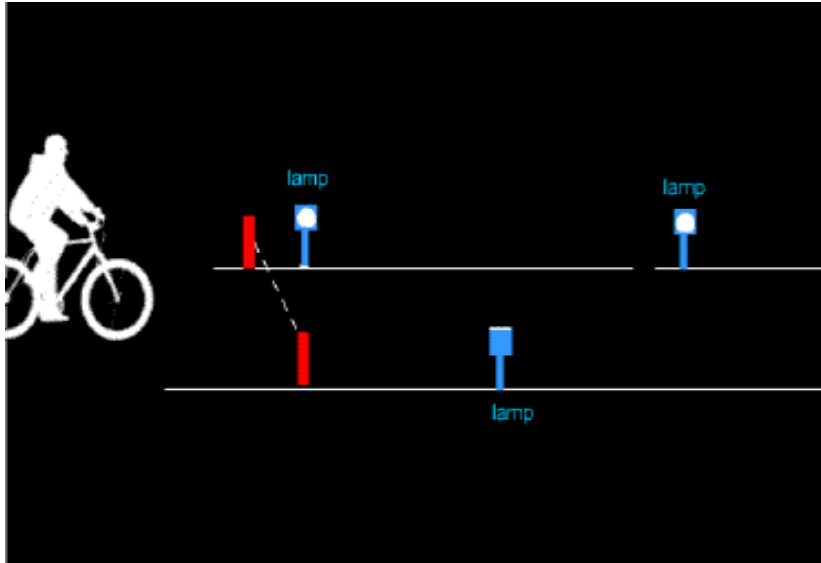
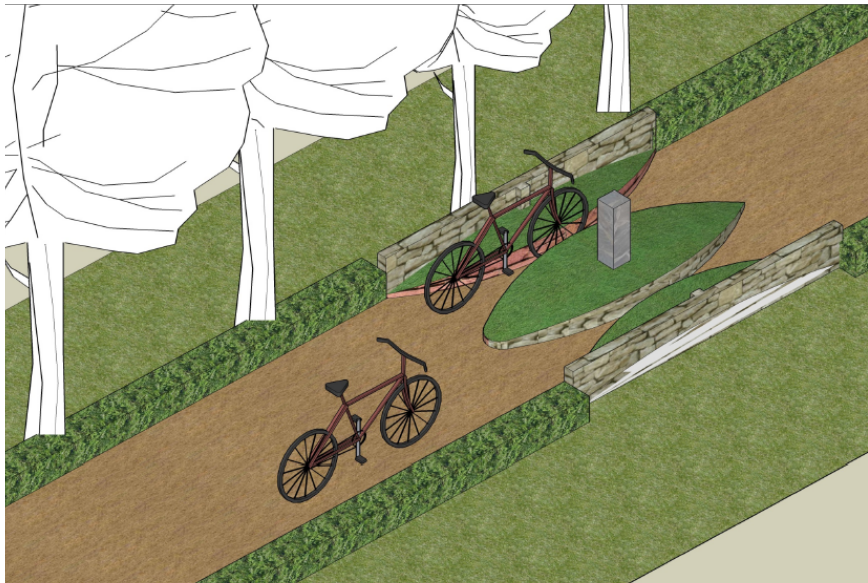
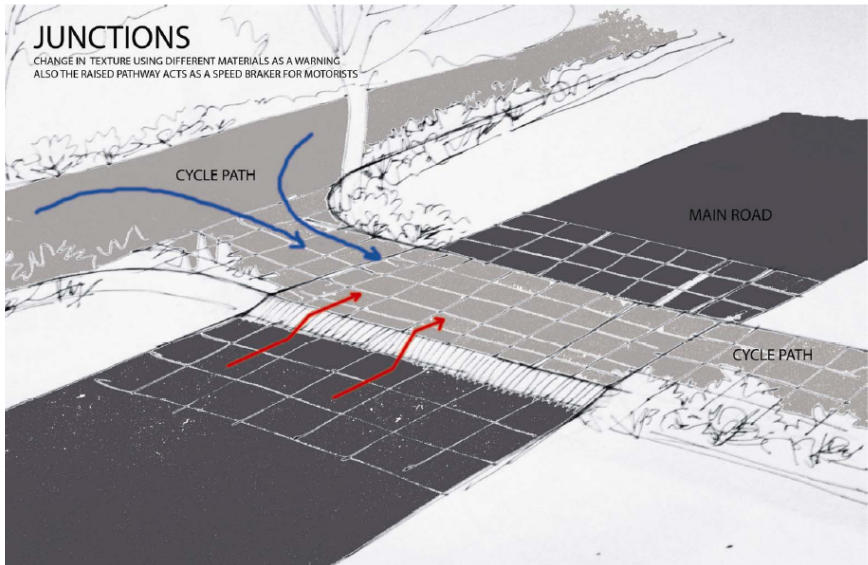
"I feel like I am a second class citizen"

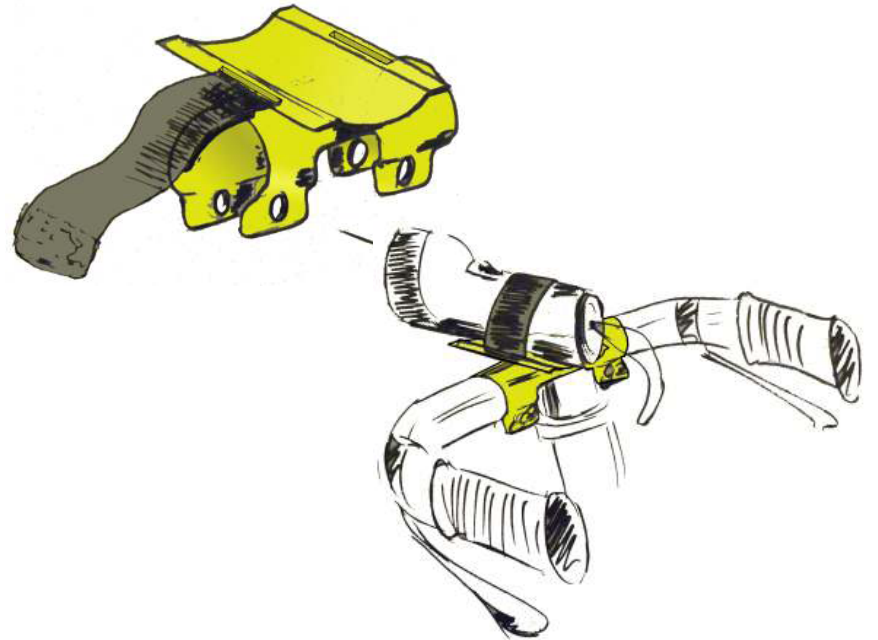
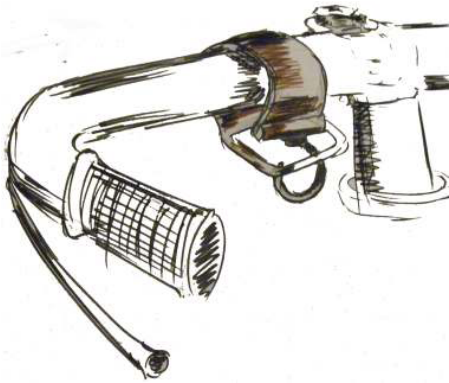
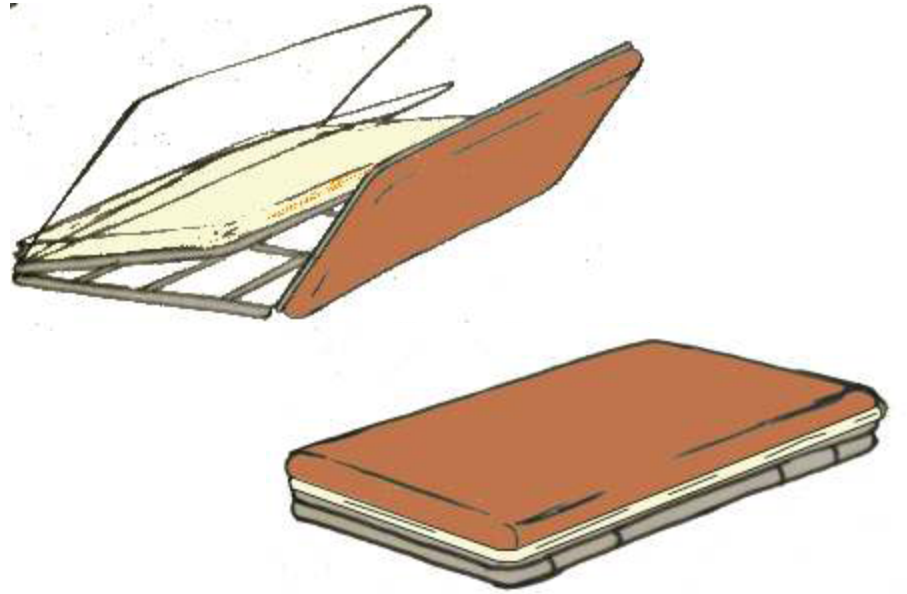
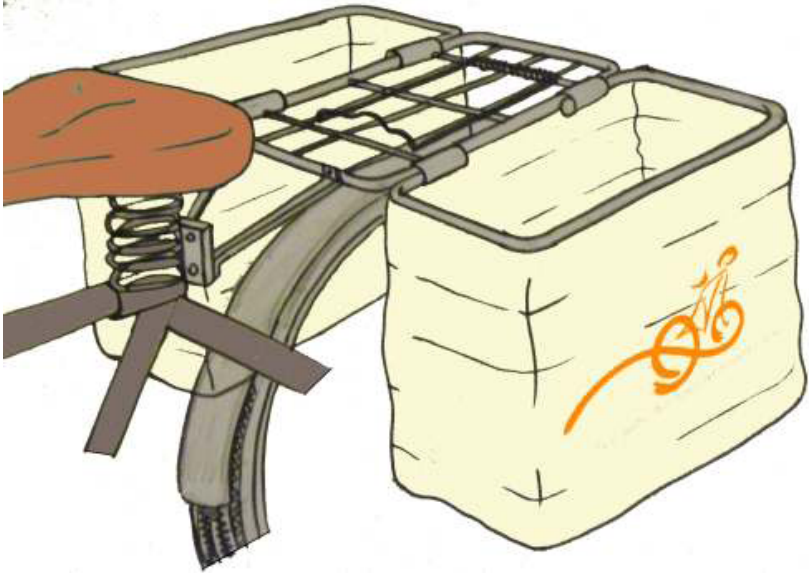
"People get confused because they don't know where they are. For visitors its quite frightening!"

Ideation



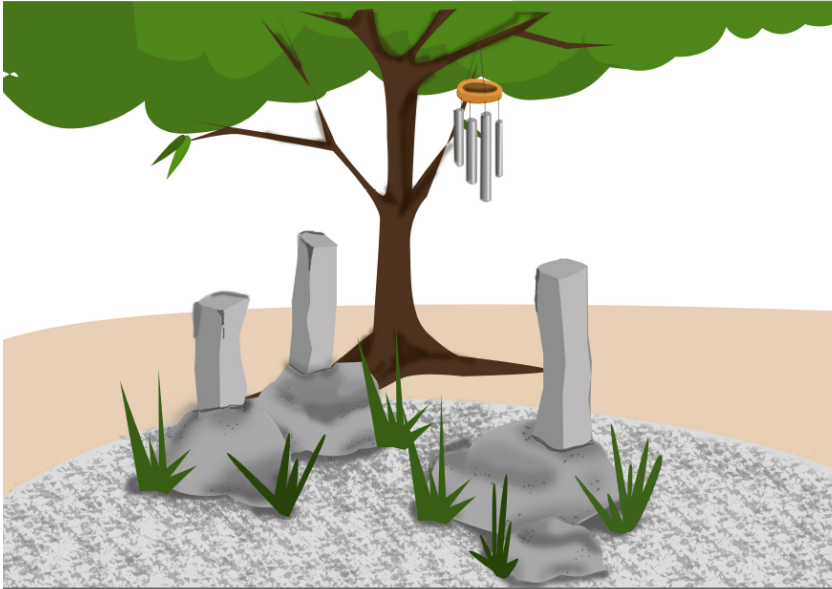




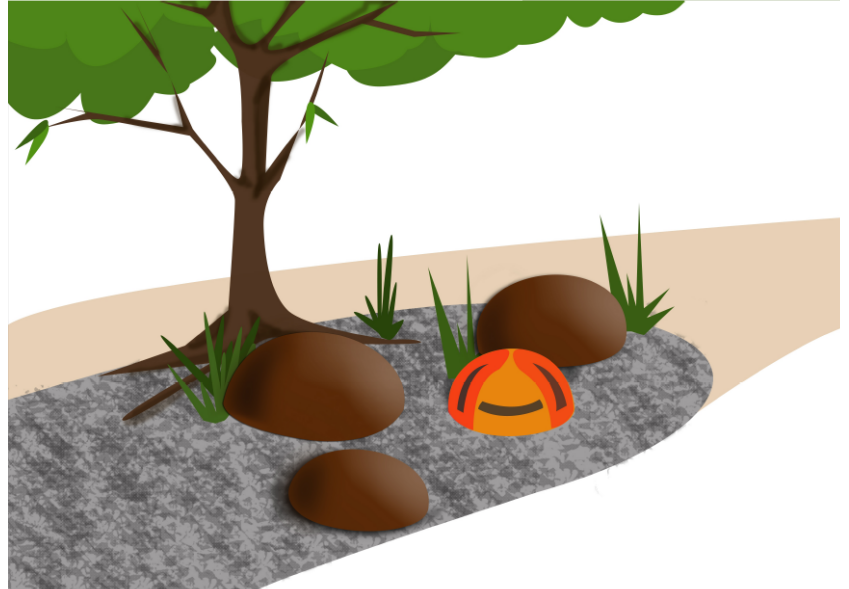


Rest stop

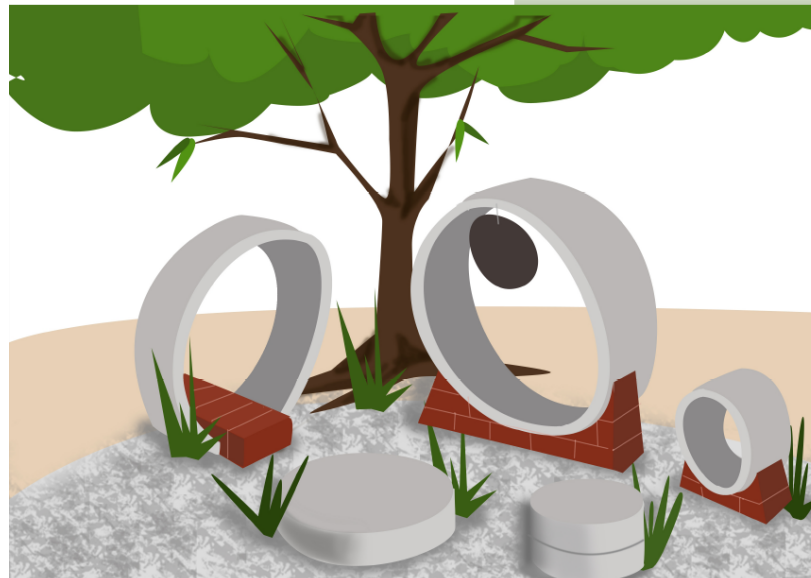
CONCEPT 3 – HOLISTIC ENERGY



CONCEPT 1 – POTTERY LOUNGE



CONCEPT 2 – SOLAR SPOT



Signage



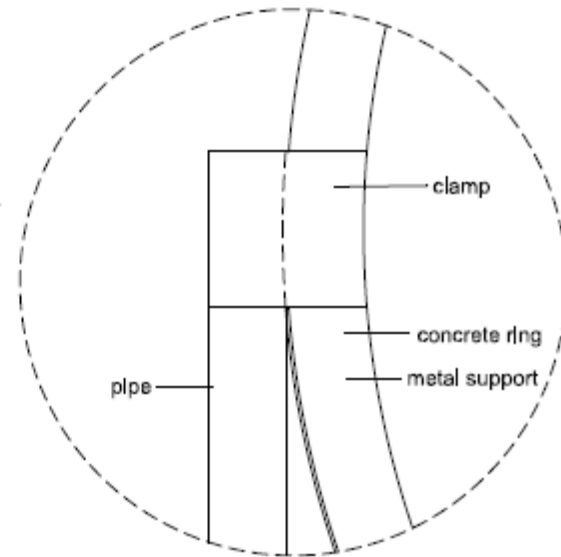
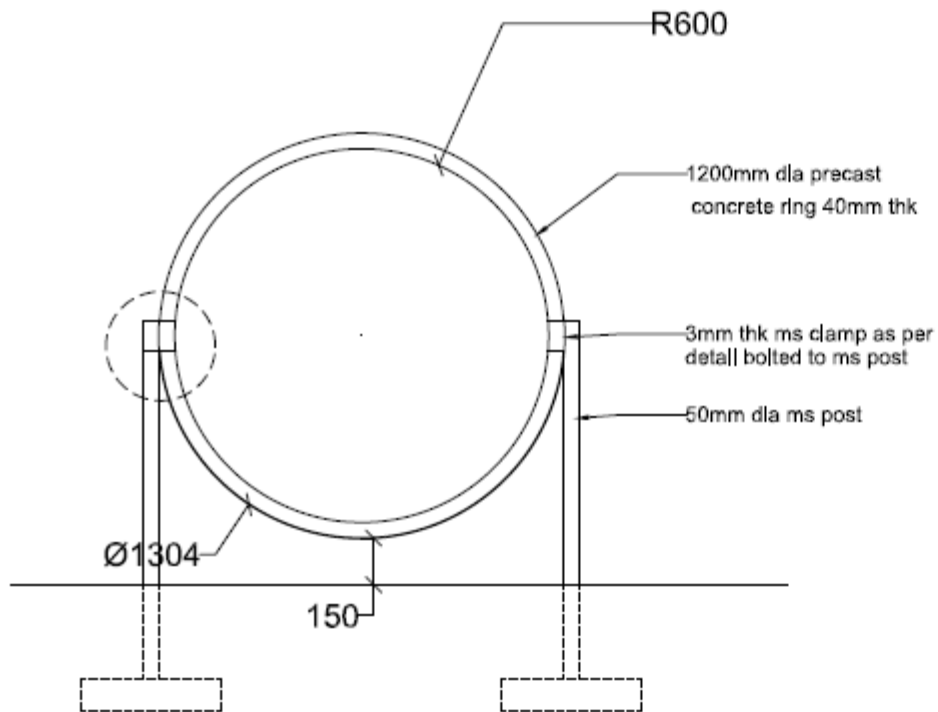
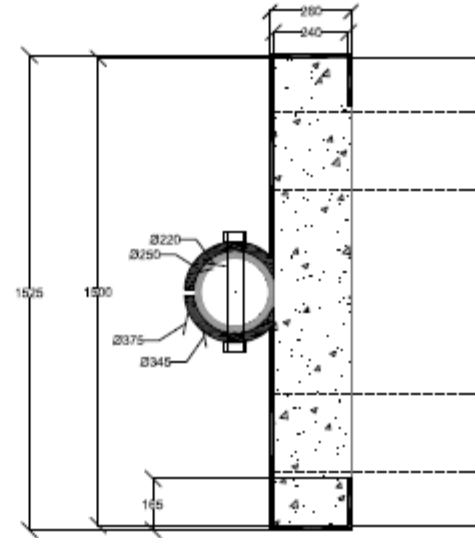
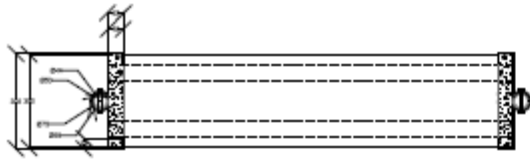
EMBEDDED CERAMIC

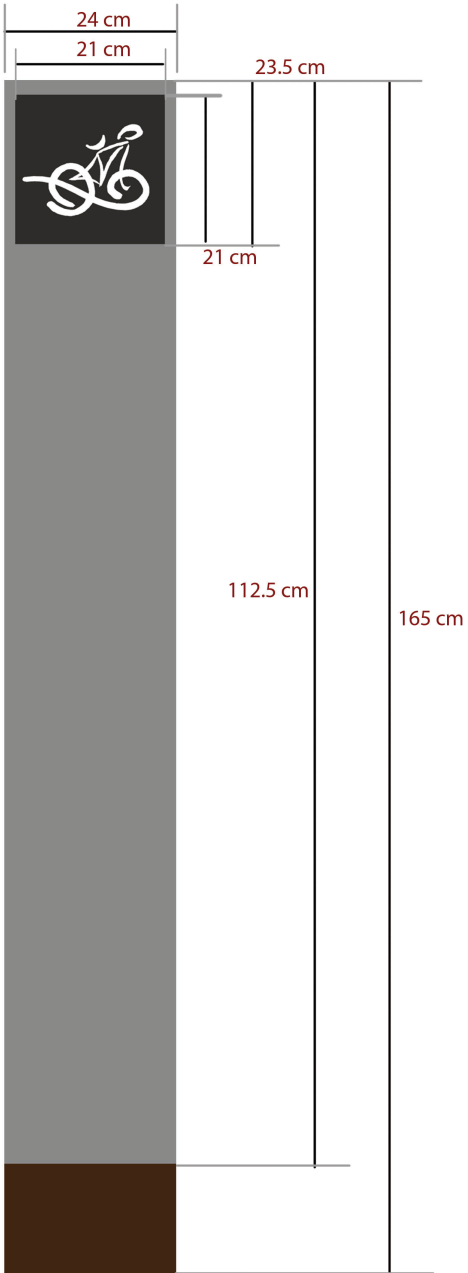
GRANITE PILLAR



Detailing







	Contents	Price/ item	Quantity	Total Amount
1	Pre-cast Concrete Rings			
	60 cm (With base)	275	2	550
	90 cm (With base)	940	1	940
	120 cm	875	1	875
	100 cm x 25 cm Half ring	200	1	200
	80 cm x 28 cm Half ring	150	1	150
	Labour charges			200
	Transportation			300
	Precast Jaali 3'x2' Option 2	32/ Sq ft	6	1152
	Transportation			300
Labour charges			200	
3	Granite Pillar			
	Ceramic embedding			
	Polishing of Pillar			
	Transportation	150		150
	Installation			2000
4	2" pipe with Metal Clamp for Ring seat with paint	1000	3	3000
5	Wind Chime		1	Donation
6	Granite edges			Donation
7	Plants (Sansiverra, Pedalantus, Kalanchola)			200
8	Soil		2 vendi load	1000
9	Compost		1 vendi load	600
10	Concrete for fixing pipes			500
11	Labour charges (1 mason, 1 helper)	500	3	1500
12	Miscellaneous			2000
	Total			15817

Construction










Other projects





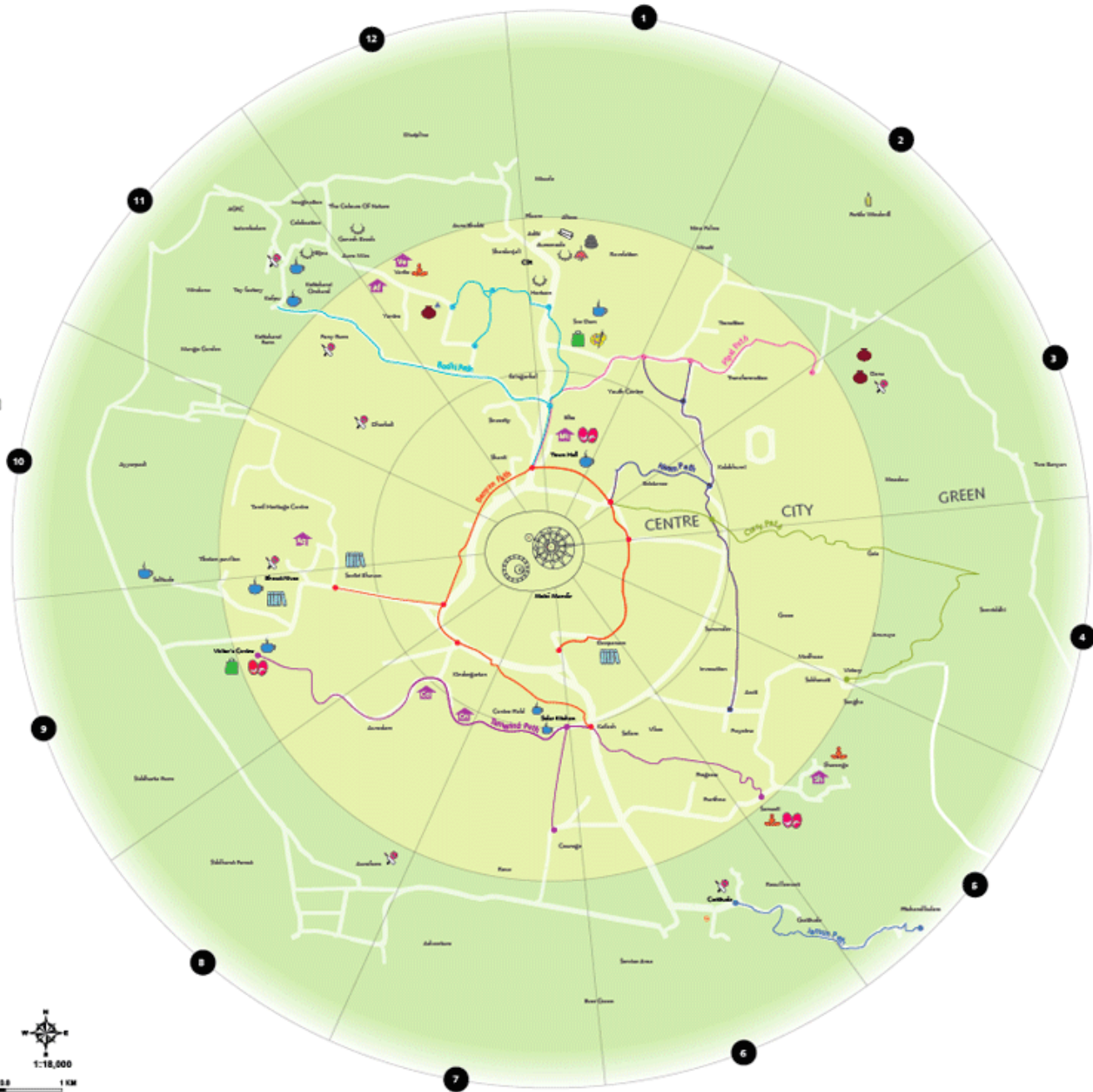


-  **Guest Houses**
 Afsanah [City12]
 Atithi Gnha [City10]
 Centre Gh [City8]
 College Gh [City8]
 Mitra Youth Hostel [Centre1]
 Sharnga Gh [Green5]
 Vente [City12]

-  **Eating Out**
 Ganesh Bakery [Green11]
 Indus Valley [City9]
 La Terrace [Centre7]
 Saracon [Green11]
 Solar Kitchen [Centre7]
 Solitude Organic Restaurant [Green10]
 Le Morgan Cafeteria [Centre1]
 Visitors Cafe [City9]
 Well Studio Cafe [City1]

- Activities**
 Wellness - Yoga, Somatics, Tai Chi...
 Sports - Basketball, Chess, Karate...
 Art - Painting, Sculpture...
 Performing Arts - Dance, Movies...
 Libraries
 Shops

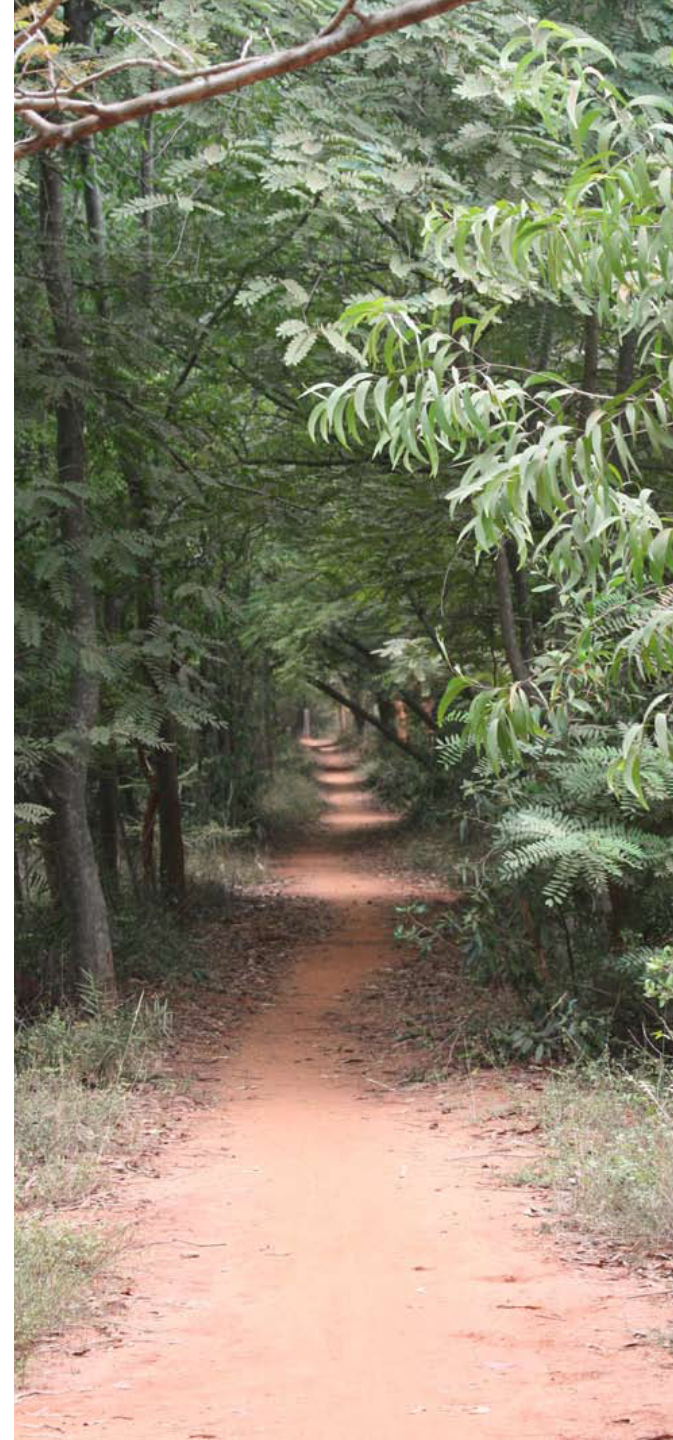
- Units & Crafts**
 Ceramics
 Jewellery
 Incense
 Paper
 Lampshades
 Stoneworks





Experience

- New place, Sustainable way of living.
- Methodology to work in a large group of people.
- Diversity in people
- Collection of quantitative data in a short period of time.
- New techniques- dream catchers, co- creating café.
- Landscape architecture.
- How to work with least resources?
- Inspiring architecture, crafts
- Opportunity to travel, adventure.
- Nature.



THANK YOU

