



IDC School of Design
अभिकल्प विद्यालय

Project 2

Designing mobile workstation for people working from home

By: **Deepti Verma**

206130016, Industrial design

Industrial Design Centre, IIT Bombay

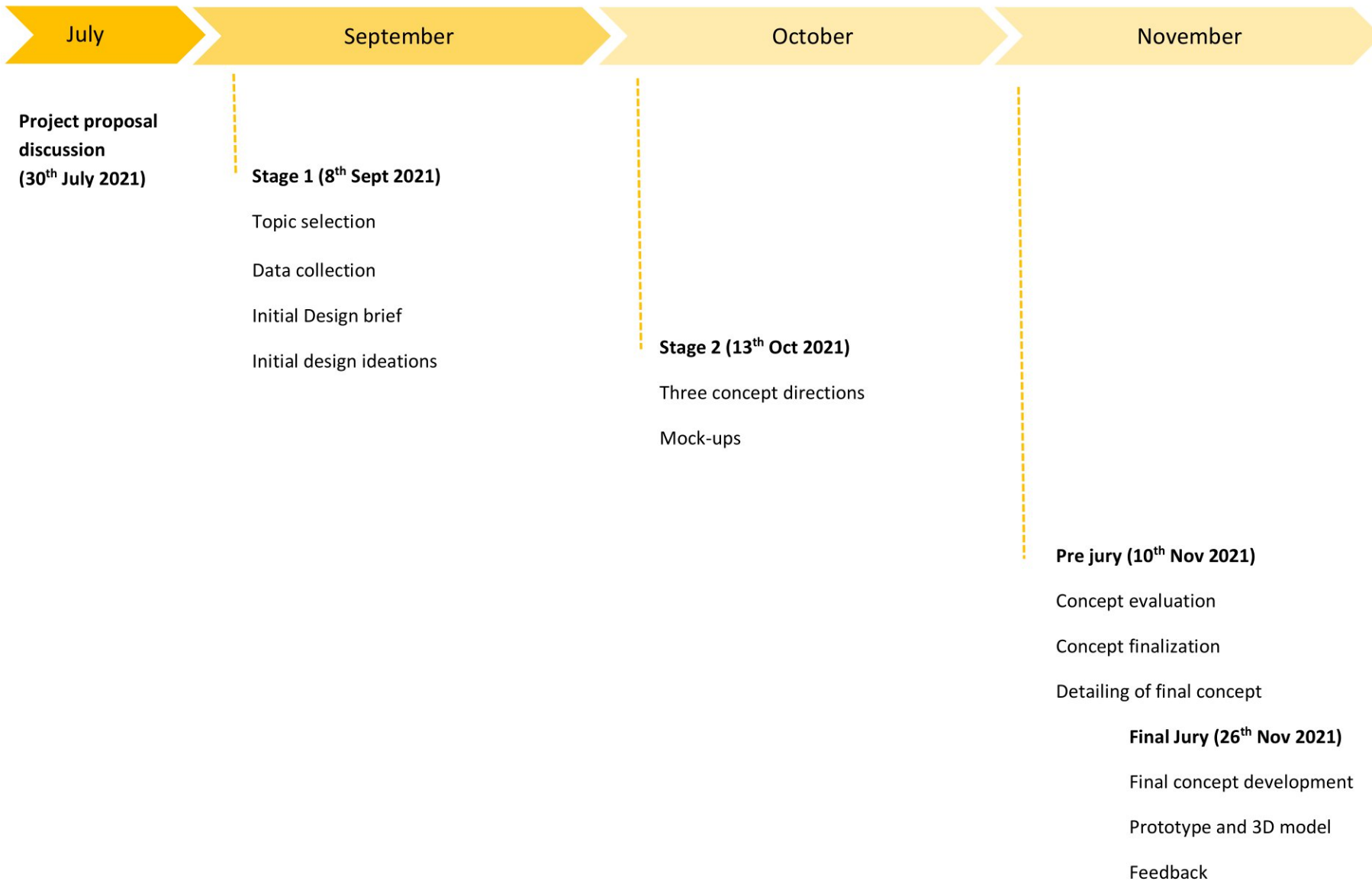
Project Guide: Prof. Kums P Kumaresan

Industrial Design Centre, IIT Bombay

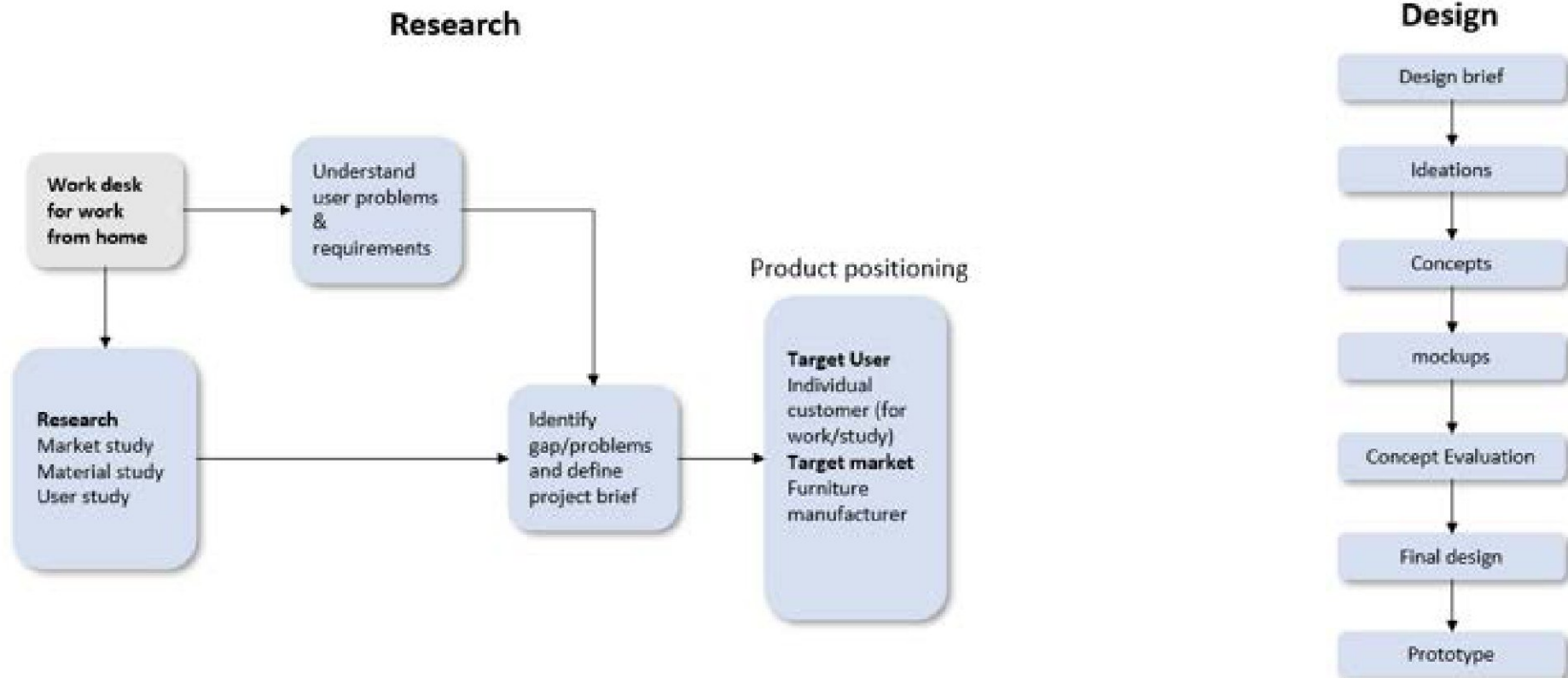
CONTENTS

Approval Sheet	2
Declaration	3
Acknowledgement.....	4
Abstract.....	5
1. Project timeline	7
2. Methodology	8
3. Introduction	9
4. Literature study	10
4.1. What is work desk?	10
4.2. Why is it an essential furniture?	10
4.3. Why is redesign required?	10
5. Research	11
5.1. Market study	11
5.1.1. Existing tables in market	11
5.1.2. Styles of furniture.....	15
5.1.3. Material study of furniture	16
5.1.4. Manufacturing process	17
5.1.5. Anthropometric study of furniture.....	18
5.1.6. Different Space study	23
5.1.7. Analysis	24
5.2. User study	25
5.2.1. Define user profile.....	25
5.2.2. Interview questionnaire.....	26
5.2.3. User interview	30
5.2.4. Insights gained.....	32
5.2.5. Problem identification.....	33
6. Design	34
6.1. Initial Design brief	34
6.2. Scope of project	35
6.3. Design Ideations	36
6.4. Concept generation	40
6.4.1. Concept 1	40
6.4.2. Concept 2	42
6.4.3. Concept 3	44
6.4.4. Mock up.....	45
6.5. Concept development	46
6.5.1. 3D block model	46
6.5.2. Functional details through block model	47
6.6. Concept evaluation	49
6.6.1. Critical analysis.....	49
6.6.2. Concept finalization.....	55
6.7. Final Design	55
6.7.1. Final design brief.....	55
6.7.2. Design sketches.....	56
6.7.3. Design details	57
6.7.4. Design stylization	65
6.7.5. Final 3D model	71
6.7.6. Material consideration	77
6.7.7. Final design prototype.....	78
6.8. Final Design analysis	88
6.9. User feedback	88
6.10. References	88

1. PROJECT TIMELINE



2. METHODOLOGY



3. INTRODUCTION

In March 2020, India hit pandemic and with the effect of lock down many people started working from home. IT industry, students' education and other activities everything was bound to be done at home. Some of these professions includes long sitting hours for work which causes various issues. Apart from that isolation, movement restrictions, mental health issues started accelerating for people working from home. This project is taken up in order to solve different challenges and struggle faced by people working from home to make their work life better, to reduce mental and physical stress, happy and productive



Target market

Furniture manufacturer



Target user

- **Primary user** – People working from home
- **Secondary user** - everyone else who require desktop to work or study from home



IT professionals



Students



Others

4. LITERATURE STUDY

4.1. WHAT IS WORK DESK?

A dedicated space that is used to work, keep one focused, comfortable and productive throughout the day. It is also a place to keep stationery and other important work-related documents organised and accessible.

4.2. WHY IS IT AN ESSENTIAL FURNITURE?

Every furniture has a specific role to play and so is work desk. It is essential as it provides focused yet comfortable work environment to user, provides better work posture with ergonomically designed table hence reducing injuries and keep things organised hence making clutter free clean work space.



4.3. WHY IS REDESIGN REQUIRED?

Since many people have started to work from home due to pandemic, managing both work and daily house task with the added responsibility of may be family members or self-care or extra precautionary steps or mental peace has become difficult. It was noticed that IT sector completely shifted to work from home and is planning to continue work from home even after pandemic to some extent. People have adapted to different ways of working at home and are facing different challenges with this shift and through this project I am trying to solve their problems by designing wholesome work desk to fulfil user requirement.

The project explores on various possibilities to make work desk more functional, usable, accessible, portable in work from home scenario by IT professionals.

5. RESEARCH

5.1. MARKET STUDY

5.1.1. EXISTING TABLES IN MARKET

Here are few references of the existing tables found on online store to understand and analyse what exists and where the gap lies for better design of table.

Fig1. is an example of existing work table found on Pepperfry online store



Fig.1

Insights gained:

- No adjustment
- No separate space for food package placement
- No inbuilt task board

Style: contemporary
Shape : rectangular
Material : Engineered
Finish: exotic teak finish
Dimensions : W 150 cm x D 60 cm x H 76 cm



Cost: INR 14,399

https://www.pepperfry.com/guide-computer-table-in-exotic-teak-finish-by-a-globia-creations-1853886.html?type=clip&pos=34:1&cat=1916&total_result=655&variation_id=209437

Example 2 of existing work table found on homecentre online store



Style: contemporary
Material : Engineered wood
Finish: Melamine
Dimensions : W 120 cm x D 40 cm x H 120 cm



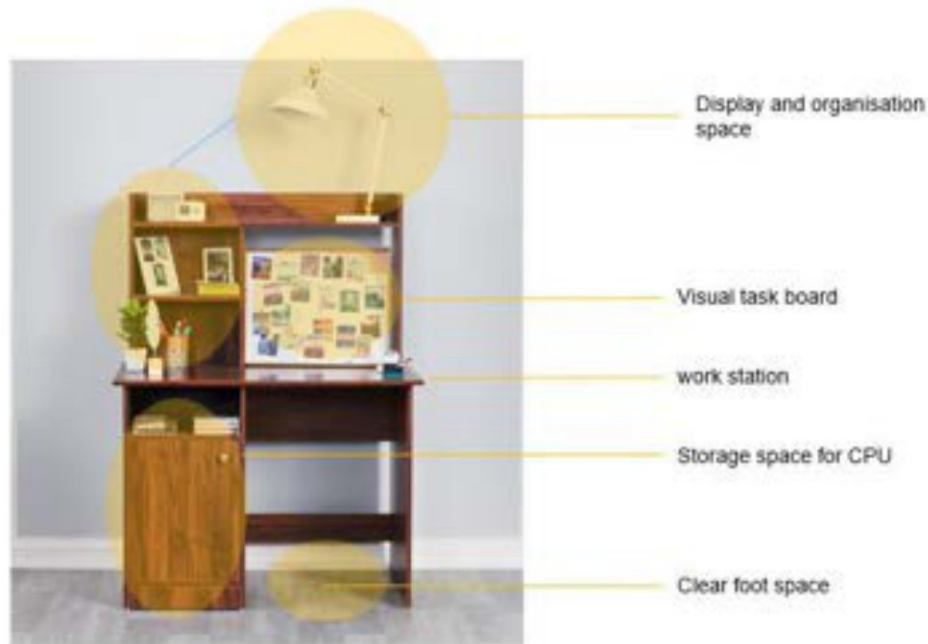
Price : INR 14,735

Insights gained:

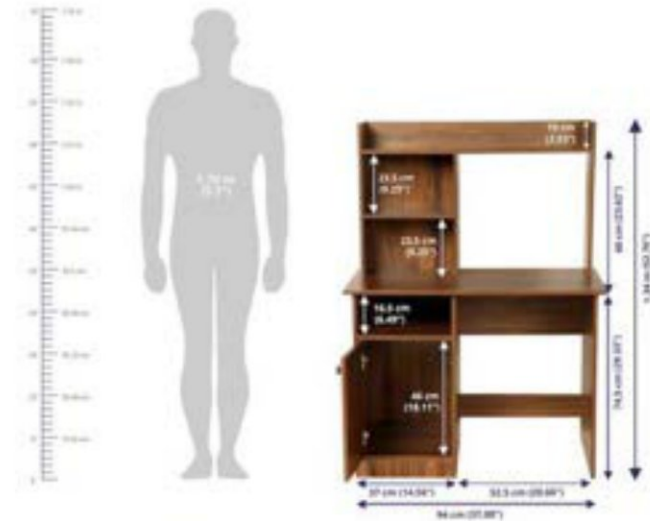
- No space for CPU and desktop
- No adjustment

<https://www.homecentre.in/in/en/Home-Office/Home-Office-Tables/Computer-Tables/HOMECENTRE-HELIOS-Darice-Walnut-Engineered-Wood-Study-Table--120-x-40-x-120-cm/p/1000010207582>

Example 3 of existing work table found on homecentre online store



Style: contemporary
Material : Engineered wood
Finish: Melamine
Dimensions : W 120 cm x D 40 cm x H 120 cm



Price : INR 14,735

Insights gained:

- Visual task board can hide with laptop screen
- No adjustment – fixed design

<https://www.homecentre.in/in/en/Home-Office/Home-Office-Tables/Computer-Tables/HOMECENTRE-HELIOS-Darice-Walnut-Engineered-Wood-Study-Table--120-x-40-x-120-cm/p/1000010207582>

Example 4 of existing work table found on homecentre online store



Small and compact

Inbuilt Power sockets

Small work station
not enough work space

Storage space for
books

Style: contemporary
Material : Engineered wood and cast iron frame coated with
paint
Finish: Melamine
Dimensions : W 50 cm x D 30 cm x H 64 cm



Cost: INR 5,450

- No adjustment
- Space may not be sufficient to keep all other products needed

<https://www.homecentre.in/in/en/Home-Office/Home-Office-Tables/Work-Tables/HOMECENTRE-Helios-Solid-Brown-Engineered-Wood-Work-From-Home-Table-with-USB-Socket/p/1000010317289>

5.1.2. STYLES OF FURNITURE

Traditional furniture

Main characteristics of this style are simplicity, elegance, curved lines, classic silhouettes in wood, colours used are rich shades of brown. Intricate details on the wood are part of its style. Image below shows is an example of traditional furniture.



<https://www.cymax.com/Steve-Silver-Antoinette-Coffee-Table-AY150C.htm>

<https://www.bassettfurniture.com/blog/what-is-traditional-furniture.aspx>

Modern furniture

These types of furniture are characterised by simple and crisp lines without much ornamental details. Mostly neutral colours are used and a wide variety of materials are used like wood, glass, metal, plastic and other composite materials. Modern design grows with the time and tend.



Mid-century modern

It is defined as collection of most iconic modern design from the 1933 to 1965. The style is characterised by fine and sophisticated line, simple and few details following neutral colour palette. Most popular material used is natural wood with natural wood finish of pine, walnut, maple finishes.



Contemporary style

It is characterised by fluid geometry and curved lines based on present time. Wide range of materials are used for construction.



5.1.3. MATERIAL STUDY OF FURNITURE

There are variety of materials available these days from natural wood to technically sound man-made wood which can be used for various types of furniture making depending on the structure and requirement.

Apart from wood there are other materials that are widely used in the furniture industry for various different parts like metal, plastic or any other composite material.

Use of material in any furniture depends on the following factors, Strength, movement in furniture, durability, hardware, style of furniture, preference.

Natural wood

Natural wood is a very strong material for furniture manufacturing as it is a **sustainable material, texture and wood grains** make the overall look pleasing and also the natural colour. The only limitations at some places are due to its effect of shrink when dried and swell in moist atmospheric conditions. There has to be some allowance to be given while construction of the furniture.

Although furniture made using natural wood gives a premium look to the space and reflects personality but there is a lot wastage that happens in its construction in the form saw dust and wooden shaves.

https://www.fs.fed.us/ne/newtown_square/publications/research_papers/pdfs/s_canned/OCR/ne_rp600.pdf

Plastic

Plastic as a material for furniture manufacturing is not cheap, rather a high-quality plastic has a lot of benefits over other materials. It is low maintenance, rust free, easy to clean, mouldable in any form

1	2	3	4	5	6	7
PETE	HDPE	V	LDPE	PP	PS	DIGER
Polyethylene Terephthalate	High Density Polythene	Polyvinyl Chloride	Low Density Polythene	Polypromylene	Polystyrene	Other Multi-Layer
Beverages, water and soda and all drinking bottles	Milk containers, cleaning supplies, laundry detergent, floor wax, shampoo bottles, food jars	Sealed and food packs, pipe, fully compressed, pressure pipes	Clashed bottles, shopping bags, high strength plastic	Furniture, storage containers, toys, interior and exterior parts, other car	Refrigerator shelves, food jars, CD and DVD cases, CD and DVD packaging cases	Some 120-gramm, 150-gramm and 200-gramm containers, other plastic containers and bottles

https://www.researchgate.net/publication/341641258_Usage_Of_Plastic_Wastes_in_Furniture_Production_Three_Dimensional_3D_Printing_Technologies

https://www.academia.edu/38376286/USE_OF_PLASTIC_MATERIALS_IN_FURNITURE_DESIGN_pdf

5.1.4. MANUFACTURING PROCESS

For different material the manufacturing process varies. Many furniture is combination of metal, glass, plastic, rattan and wood so each stage of manufacturing is different. At the end everything is assembled to form a single piece of furniture.

Wooden furniture

For wooden furniture, the processes involved are cutting, bending, moulding, laminating, finishes, painting or polishing and assembling different parts with the help of joinery and adhesive.



Cutting

Bending



moulding

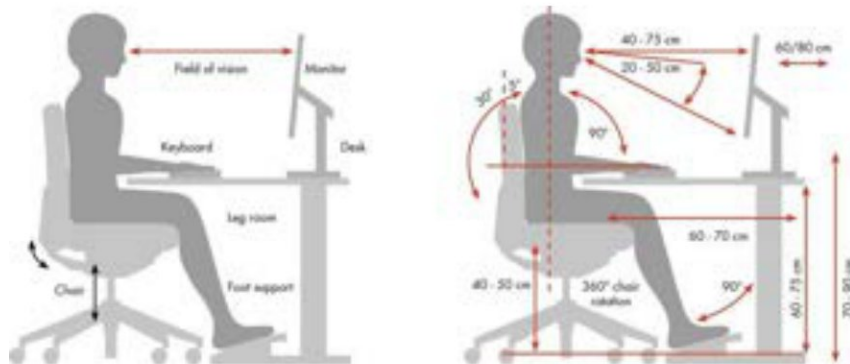
Plastic furniture

Most of the plastic furniture like table, chair etc are made using injection molding process. And the initial step involved is the 3d drawing of the product and then followed by making the mold.

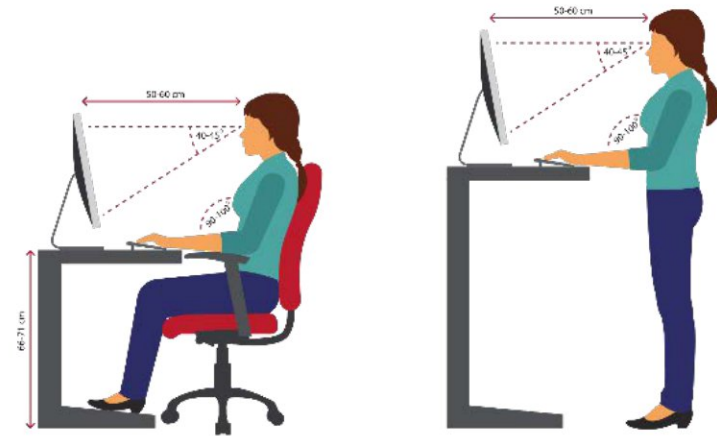
5.1.5. ANTHROPOMETRIC STUDY OF FURNITURE

The standard height for a study desk/table is considered to be **26" - 30"**

The average height bracket of people is considered to be ranging between **5'8" - 5'10"**

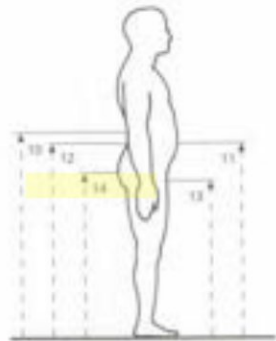


From the above figure we can understand the foot clearance, height of table top from the ground, vision distance from the computer screen which will help in deciding the dimensions of the table

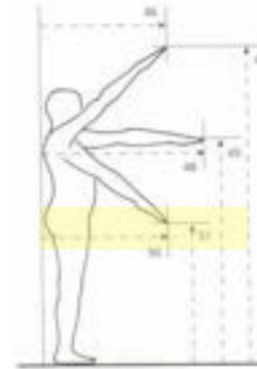


The above image shows the vision distance in sitting and standing posture of working on a desk. It is recommended by ergonomists that a n active movement should be maintained in average eight-hour workday. A dynamic way of working is always recommended. While sitting posture give user back support and comfort during work, standing posture in between helps your body circulate blood more effectively and gives your body an opportunity to stretch which is very important.

All the anthropometric data is taken from the book “Dev Kumar Chakraborty- Anthropometry Data”, showing data with respect to Indian male and female body dimensions.



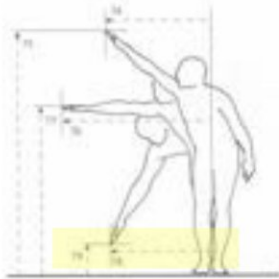
R.No.	Parameters		Min	Percentiles					Max	Mean	±SD
				5th	25th	50th	75th	95th			
10	Elbow	Male	791	945	1003	1039	1072	1123	1405	1038	56
		Female	808	879	923	953	989	1039	1202	956	50
		Combined	791	908	970	1022	1061	1115	1405	1018	65
11	Abdominal extension	Male	705	925	977	1015	1050	1110	1345	1016	59
		Female	813	829	857	900	942	1019	1155	908	62
		Combined	795	881	965	1009	1047	1109	1345	1005	67
12	Waist	Male	819	894	935	970	1005	1053	1170	972	51
		Female	746	839	893	931	970	1027	1046	931	56
		Combined	766	875	927	965	1000	1047	1170	963	55



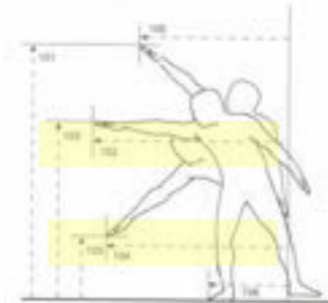
R.No.	Parameters		Min	Percentiles					Max	Mean	±SD	Ratio
				5th	25th	50th	75th	95th				
86	Upper position length	Male	350	460	510	528	550	750	540	522	100	0.38
		Female	350	390	420	429	460	600	380	413	100	0.34
		Combined	350	420	460	479	500	670	460	528	100	0.36
87	Upper position height	Male	1570	1650	1700	1800	1940	2000	2220	1870	118	1.18
		Female	1580	1610	1650	1720	1800	1900	2000	1780	100	1.04
		Combined	1580	1630	1670	1760	1850	2000	2220	1880	110	1.14
88	Mid position length (forward arm reach)	Male	380	500	550	565	570	620	1000	567	84	0.57
		Female	380	420	450	460	470	510	800	453	64	0.53
		Combined	380	460	500	515	520	560	1000	520	77	0.52
89	Mid position height	Male	1600	1720	1780	1800	1820	1920	2200	1780	95	0.80
		Female	1570	1610	1650	1720	1750	1820	1920	1720	89	0.80
		Combined	1570	1670	1720	1760	1780	1870	1940	1750	90	0.80
90	Lower position length	Male	340	410	420	430	430	500	1000	380	100	0.38
		Female	340	370	370	380	380	450	800	340	80	0.40
		Combined	340	390	390	400	400	470	1000	360	90	0.38
91	Lower position height	Male	810	820	820	820	820	820	1100	820	80	0.44
		Female	800	810	810	810	810	810	900	800	80	0.43
		Combined	810	810	810	810	810	810	1000	810	80	0.43

R.No.	Parameters		Min	Percentiles					Max	Mean	±SD	Ratio
				5th	25th	50th	75th	95th				
92	Upper position length	Male	420	670	820	850	1000	1100	1300	800	142	0.38
		Female	520	550	620	610	680	1120	1150	800	145	0.38
		Combined	420	600	720	740	1050	1150	1300	840	144	0.38
94	Upper position height	Male	1520	1620	1650	1740	1800	2000	2140	1752	147	1.07
		Female	1510	1620	1650	1720	1800	1900	1900	1647	147	1.07
		Combined	1520	1620	1650	1730	1800	1950	2140	1700	150	1.07
95	Mid position length, Forward arm reach (reaching)	Male	370	500	550	560	570	620	1000	567	111	0.64
		Female	370	420	450	460	470	510	800	453	110	0.67
		Combined	370	460	500	515	520	560	1000	520	110	0.66
96	Mid position height	Male	840	860	860	860	860	860	1000	860	120	0.74
		Female	730	830	830	830	830	830	900	830	140	0.70
		Combined	730	840	840	840	840	840	950	840	130	0.73
97	Lower position length	Male	330	410	420	430	430	500	1000	380	100	0.37
		Female	330	370	370	380	380	450	800	340	80	0.38
		Combined	330	390	390	400	400	470	1000	360	90	0.37
98	Lower position height	Male	0	0	100	110	110	110	1000	100	270	0.38
		Female	0	0	120	130	130	130	800	100	230	0.32
		Combined	0	0	110	120	120	120	1000	100	270	0.35
99	Forward mid position grip reach length (reaching forward)	Male	750	810	850	860	870	1000	1300	860	110	0.6
		Female	680	710	710	710	710	800	1000	680	80	0.57
		Combined	680	760	800	800	800	900	1300	760	90	0.58

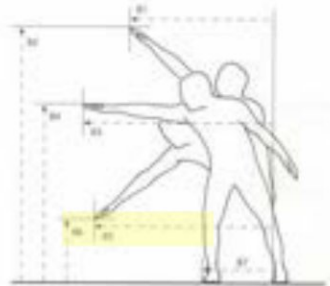




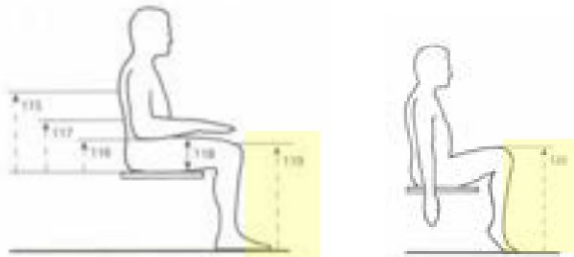
S.No.	Parameters	Min	Percentiles					Max	Mean	σSD	Ratio	
			5th	25th	50th	75th	95th					
14	Upper position length	Male	430	429	740	809	919	1029	1230	827	100	0.71
		Female	395	475	450	790	869	929	1160	760	102	0.88
		Combined	395	500	725	800	900	1010	1200	810	100	0.81
15	Upper position height	Male	1920	1490	1620	1720	1800	1890	2100	1724	100	1.00
		Female	1590	1380	1530	1640	1730	1800	1980	1610	100	1.00
		Combined	1590	1440	1610	1710	1790	1900	2100	1760	100	1.00
16	Mid position length	Male	780	870	900	1010	1080	1180	1370	1024	100	0.82
		Female	690	750	820	910	960	1050	1200	810	90	0.70
		Combined	690	820	860	960	1020	1100	1300	900	100	0.80
17	Mid position height	Male	890	1000	1030	1120	1200	1410	1440	1200	111	0.78
		Female	780	800	1010	1120	1160	1260	1460	1160	100	0.74
		Combined	780	900	1100	1210	1280	1410	1460	1210	100	0.75
18	Lower position length	Male	400	510	590	700	800	890	1110	760	100	0.68
		Female	400	490	510	710	760	860	1040	710	107	0.67
		Combined	400	540	560	700	800	880	1100	780	100	0.67
19	Lower position height	Male	0	9	110	120	200	300	1100	500	250	0.27
		Female	0	9	170	200	400	500	1000	407	250	0.24
		Combined	0	9	110	170	400	500	1000	500	250	0.27
20	Sideways mid position grip reach length (bearing sideways)	Male	710	801	870	930	990	1090	1190	1000	101	0.70
		Female	670	711	781	821	890	920	1020	820	101	0.70
		Combined	670	750	840	890	960	1000	1100	910	101	0.70



S.No.	Parameters	Min	Percentiles					Max	Mean	σSD	Ratio	
			5th	25th	50th	75th	95th					
102	Upper position length	Male	450	450	860	970	1090	1230	1680	812	110	0.80
		Female	390	570	710	800	890	1130	1250	832	110	0.84
		Combined	390	620	830	900	1040	1200	1680	840	100	0.80
103	Upper position height	Male	1780	1490	1630	1730	1810	1960	2160	1720	100	1.00
		Female	1510	1310	1500	1590	1670	1810	1910	1610	100	1.00
		Combined	1510	1400	1610	1700	1800	1900	2100	1700	100	1.00
104	Mid position length	Male	780	890	1000	1100	1210	1410	1500	1190	100	0.74
		Female	670	780	800	1010	1080	1200	1390	1000	100	0.69
		Combined	670	800	1000	1100	1200	1400	1500	1100	110	0.71
105	Mid position height	Male	890	1000	1100	1200	1300	1400	1600	1240	100	0.75
		Female	810	820	1010	1100	1200	1400	1500	1100	100	0.73
		Combined	810	900	1100	1200	1300	1400	1600	1200	100	0.70
106	Lower position length	Male	400	490	510	800	860	1000	1200	800	110	0.68
		Female	420	510	590	810	890	990	1180	800	100	0.67
		Combined	400	540	550	810	900	1000	1200	830	110	0.68
107	Lower position height	Male	0	70	100	200	310	410	1200	500	250	0.28
		Female	0	90	200	240	390	490	1000	400	220	0.28
		Combined	0	70	110	210	300	400	1100	450	250	0.30
108	Step length backwards	Male	280	340	400	470	540	700	1000	500	100	0.28
		Female	240	270	310	350	420	470	720	400	100	0.28
		Combined	240	310	400	410	510	600	1000	500	100	0.28



S.No.	Parameters	Min	Percentiles					Max	Mean	σSD	Ratio	
			5th	25th	50th	75th	95th					
81	Upper position length	Male	430	430	800	1000	1210	1390	1620	1110	100	0.68
		Female	330	500	610	810	1000	1210	1390	900	100	0.61
		Combined	430	700	800	1070	1160	1400	1620	1070	100	0.66
82	Upper position height	Male	1460	1470	1590	1690	1790	1920	2160	1700	100	1.00
		Female	1360	1380	1520	1640	1730	1820	2010	1610	100	1.00
		Combined	1360	1460	1560	1660	1760	1870	2100	1660	100	1.00
83	Mid position length	Male	890	1000	1030	1100	1180	1310	1500	1010	100	0.68
		Female	800	900	1000	1100	1160	1260	1460	1140	100	0.70
		Combined	800	1010	1100	1210	1280	1390	1500	1200	100	0.70
84	Mid position height	Male	630	690	1120	1200	1280	1380	1670	1200	100	0.70
		Female	770	800	1060	1140	1240	1340	1630	1140	100	0.74
		Combined	630	690	1100	1210	1280	1400	1670	1190	100	0.70
85	Lower position length	Male	430	470	1070	1120	1240	1400	1600	1140	100	0.68
		Female	430	500	600	800	1000	1200	1400	960	110	0.63
		Combined	430	500	870	1100	1210	1410	1600	1100	100	0.68
86	Lower position height	Male	0	70	220	400	520	690	1500	470	200	0.28
		Female	0	90	200	300	400	500	1170	390	200	0.28
		Combined	0	90	220	400	490	600	1500	450	200	0.28
87	Sideways step length	Male	300	420	540	600	770	920	1140	670	100	0.41
		Female	340	330	470	540	620	680	820	540	100	0.36
		Combined	300	400	520	570	700	800	1140	640	100	0.34

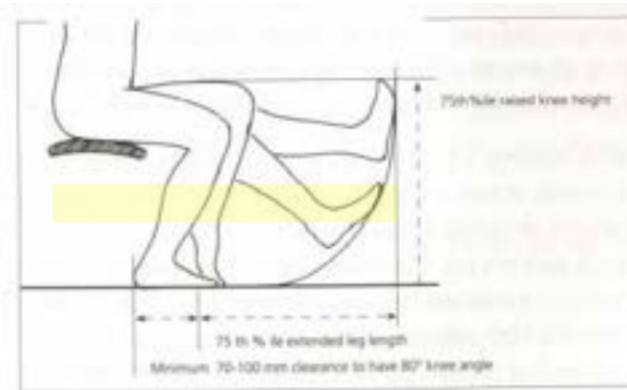


E.No. Parameters	Min	Percentiles					Max	Mean	sSD	Ratio	
		5th	25th	50th	75th	95th					
110 Tip of shoulder	Male	441	475	499	517	542	576	495	432	32	0.26
	Female	371	405	431	454	485	519	438	367	26	0.24
	Combined	371	406	435	457	493	530	466	412	29	0.25
116 Elbow rest	Male	112	128	142	153	159	170	135	215	34	0.13
	Female	102	124	137	154	178	205	139	195	35	0.13
	Combined	102	126	140	153	164	188	137	217	35	0.13
117 Waist	Male	402	454	475	488	496	525	527	546	28	0.11
	Female	136	142	148	154	161	169	161	167	36	0.14
	Combined	132	151	157	165	169	177	164	176	36	0.12
118 Mid thigh	Male	85	86	110	127	140	158	125	128	18	0.08
	Female	72	85	102	108	124	134	112	114	24	0.07
	Combined	85	88	106	118	132	146	118	121	22	0.08
119 Knee	Male	408	472	487	518	536	567	472	520	36	0.32
	Female	412	442	462	484	499	525	518	491	28	0.32
	Combined	412	454	480	508	514	562	492	511	31	0.32

8.No. Parameters Definitions (brief)

120 Thigh clearance H, with raised knee	Highest point on the knee (at lower thigh), when the leg is raised upward to the maximum supported on the foot.
---	---

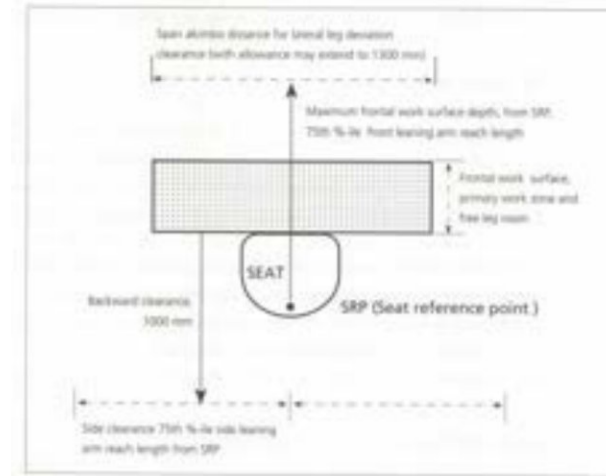
E.No. Parameters	Min	Percentiles					Max	Mean	sSD	Ratio	
		5th	25th	50th	75th	95th					
128 Buttock to leg length, external sitting	Male	639	640	654	715	775	778	780	809	58	0.42
	Female	539	540	579	629	729	758	761	811	76	0.42
	Combined	539	540	594	654	729	778	780	844	73	0.42
129 Buttock to leg length while raised on toe	Male	520	569	594	639	694	769	760	854	68	0.4
	Female	450	529	639	689	689	718	760	855	61	0.42
	Combined	450	559	609	639	689	758	760	857	67	0.41
130 Buttock to extended (rested on floor) leg comfortable length	Male	625	718	809	921	989	1096	1215	926	98	0.58
	Female	560	718	809	851	904	979	1064	852	78	0.56
	Combined	560	729	849	905	979	1068	1210	910	94	0.56
131 Buttock to leg full extended length	Male	870	871	1039	1088	1138	1208	1200	1088	72	0.68
	Female	800	810	964	999	1025	1108	1100	1000	64	0.64
	Combined	805	841	1019	1071	1118	1198	1200	1071	78	0.66



Leg clearance: 1069 mm



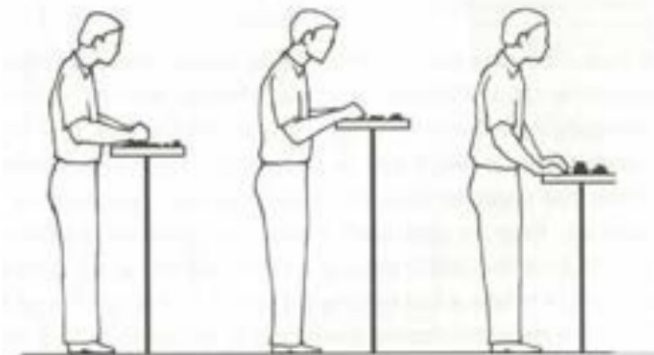
Seating space consideration for work



R.No.	Parameters	Min	Percentiles					Max	Mean	±SD	Ratio	
			5th	25th	50th	75th	95th					
137	Hip	Male	209	272	309	331	355	405	334	43	0.2	
		Female	220	259	296	314	341	429	320	33	0.21	
		Combined	209	268	304	326	353	408	330	40	0.2	
138	Thigh (middle) external breadth, single	Male	82	99	116	129	142	164	124	20	0.08	
		Female	53	75	96	105	116	136	149	107	18	0.07
		Combined	53	84	108	125	139	162	124	22	0.08	
139	Mid thigh-to thigh external breadth (relaxed)	Male	285	339	339	369	399	448	400	373	50	0.23
		Female	273	274	309	379	394	529	330	363	47	0.24
		Combined	273	289	334	369	394	479	330	371	54	0.23
140	Elbow to elbow (closed)	Male	296	346	375	409	435	489	346	411	47	0.25
		Female	257	282	325	364	399	435	310	363	50	0.24
		Combined	257	311	366	396	430	479	346	394	52	0.25
141	Elbow to elbow (relaxed)	Male	330	424	464	505	549	644	421	514	73	0.31
		Female	340	352	395	439	474	572	387	444	61	0.29
		Combined	330	389	451	494	539	632	421	501	74	0.31

Preferred height for standing work surface: **elbow height(1115mm) + (50 – 200mm)**

R.No.	Parameters	Min	Percentiles					Max	Mean	±SD	Ratio	
			5th	25th	50th	75th	95th					
142	Knee to knee (closed)	Male	160	166	181	192	204	235	190	197	24	0.12
		Female	138	143	163	174	190	255	174	182	30	0.12
		Combined	138	153	177	189	201	243	180	189	28	0.12
143	Knee to knee (relaxed)	Male	220	284	339	388	438	525	277	395	76	0.24
		Female	191	225	242	298	339	410	281	307	65	0.2
		Combined	191	252	314	369	419	529	281	375	82	0.23
144	Chest, on bust	Male	157	181	196	209	227	254	205	215	38	0.13
		Female	158	171	191	207	237	315	171	217	37	0.14
		Combined	157	179	195	209	229	260	188	215	30	0.13
145	Chest, below bust	Male	158	167	186	201	220	247	205	205	38	0.12
		Female	148	147	162	183	212	235	189	189	33	0.12
		Combined	148	164	183	199	219	247	192	203	29	0.12
146	Abdomen	Male	102	166	191	217	251	302	171	224	46	0.14
		Female	144	155	167	191	212	332	195	201	47	0.13
		Combined	102	164	187	210	245	302	171	221	47	0.14



5.1.6. DIFFERENT SPACE STUDY



one of the common spaces found in the houses where a table can be placed is against the wall. In this case our eyes are bound to see the wall and whatever is there on the wall. Such walls give you vertical space to work with and since both the sides of table space is free, it can be utilized for different organization purpose.

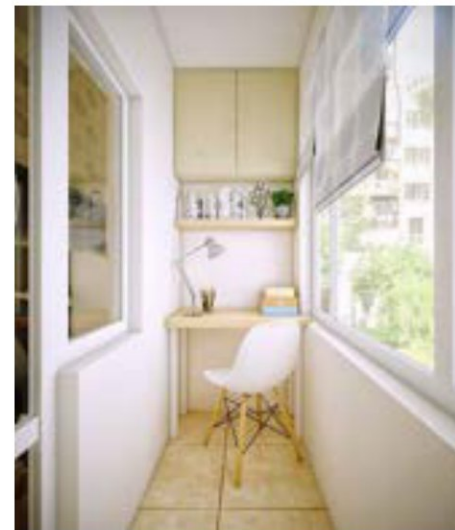


Another common place in houses is the corner space against the wall to setup the work desk. In such scenario, one side of the table space is blocked but one side is free which can be utilised. Also the table shown in the image is a compact one which points out for better management of products over the table and within practical reach.



Another not so common space in the house is in front of window. This seems to be a good location but not everyone has the joy of keeping their table here. This scenario gives eye a distant sight while working in front of computer since we can see what's going on out, feel the fresh air and light. It makes the day less stressful as compared to other scenarios. The only constraint I feel over here is the utilization of vertical space since we have

window in front so vertical space to certain extent is possible. Bringing nature close to people desk might help them cope up with work from home environment and keep them more productive and less stressed.



Some of the alternatives people are following is by creating a work space in covered balcony or passage area. This is a great space I believe since it gives you a separate space to work in and also one can outside view to lighten up the day. But in this scenario the dimension of space may vary and thus the universal dimension of table might not fit here and there might also be some constraints with utilizing the side space of the table.

5.1.7. ANALYSIS

After above study and understanding various factors and constraints, there is need for a universal **modular design** which can fit in most of the spaces in our houses and give **freedom to user to select accessories** as per their requirement. Also, in some scenarios user might feel trapped since there is no outside vision, so **addition of nature** in some way would help lift the mood of user while working.

Increasing the capacity of compact space to its full potential will be great way to manage and organize resources thus there is need of good modular organizers.

5.2. USER STUDY

5.2.1. DEFINE USER PROFILE



Name: Mr. Subhash Muthukumar

Gender: Male

Occupation: Software engineer

Location: Mysore

Work: From home

IT PROFESSIONAL

Subhash is a project manager.

His work includes lots of meetings and management task over video/audio call.

Attending back-to-back meeting sitting in one position causes backaches for him.

He likes to go for cycling but due to long working hours he is bound to sit and work at home.

5.2.2. INTERVIEW QUESTIONNAIRE

Prepared a google form questionnaire to understand user requirement and challenged faced by them in work from home scenario.

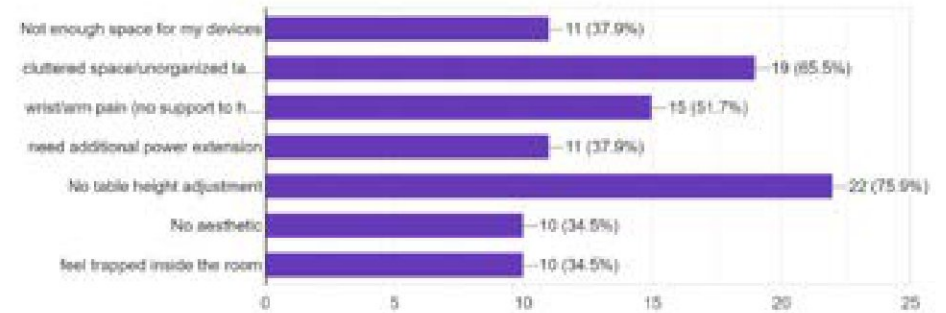
Here is the link to the form circulated with people working from home. Some of them are working in IT industry and some are college students attending online classes from home. Since both of them require a good table to work on for long hours, the form was circulated with both the user group.

https://docs.google.com/forms/d/e/1FAIpQLScgm_y1u1tMXExbZAFHt_cu377Hcl90qw0NoeMvcmUXxrMUw/viewform?usp=sf_link

I have received 31 responses from different user group as shown below.

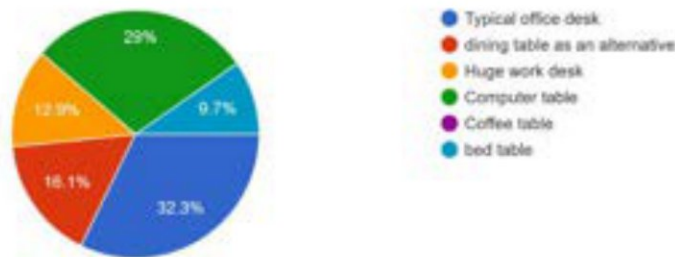
What are the challenges faced by you with respect to work table?

29 responses



What kind of table do you use for work from home? Select similar style

31 responses

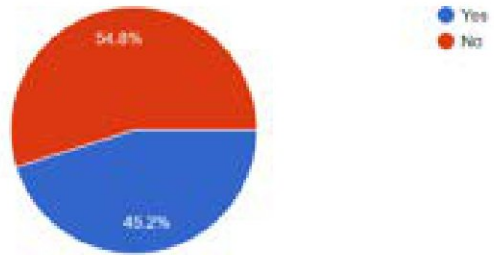


Select the products used by you or kept on table while working

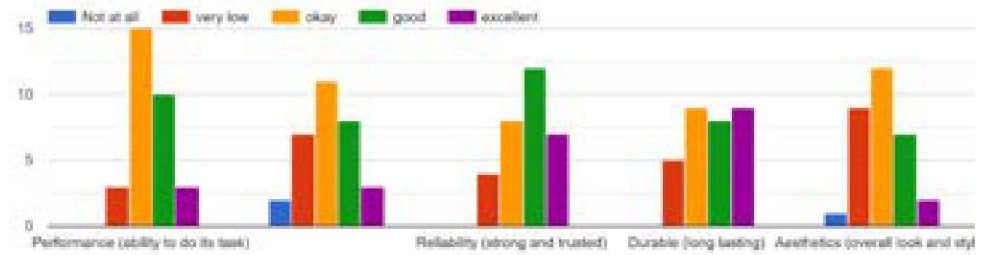
31 responses



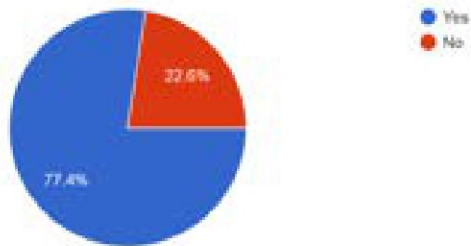
Is the size of current table sufficient for your needs?
31 responses



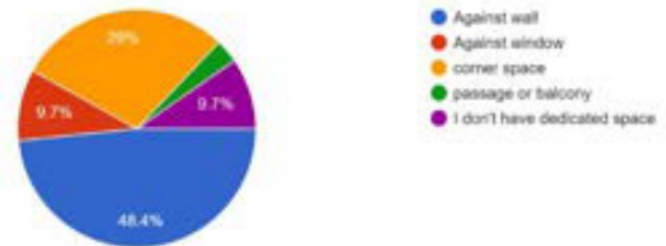
How would you rate your existing table for the following factors?



Do you have sufficient space to keep work table in the house?
31 responses

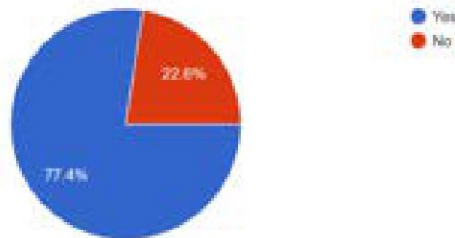


Please select the kind of space you use to keep table at home?
31 responses



Are you happy with the positioning of the table?

31 responses



If NO, why? Please elaborate

6 responses

I wish to have my table near window or atleast in a relatively open space, but it is in corner

I feel so enclosed and feel very tightly packed up against the window. For me, I like large space on table so that I can spread my stuff and feel spacious. Even if the table is placed against a wall, I would like it to have more space where the user faces. Otherwise it feels like a closely packed up space.

My table position is near the shelf so that I can keep my books and other study material, because of this I have to adjust according to it.

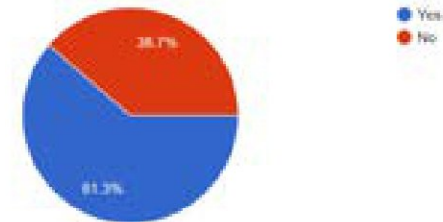
Inside dining space. Lots of circulation esp during morning when maid is there.

No table height adjustment and not enough space for external monitor and keyboard draw positioning and space are enough

I don't feel happy while working as the lighting is not proper in the corner against the wall.

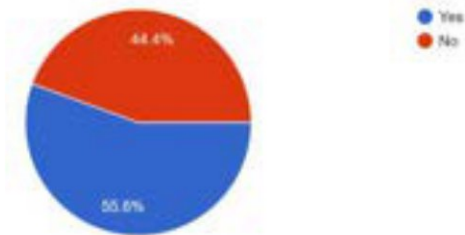
Choose your work life. Do you eat food (breakfast or lunch or dinner or coffee breaks) at work desk?

31 responses



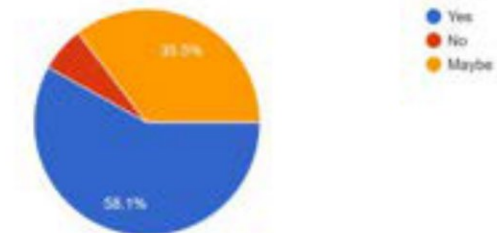
If yes, Do you feel the need for a dedicated space for food and beverage on the table?

27 responses



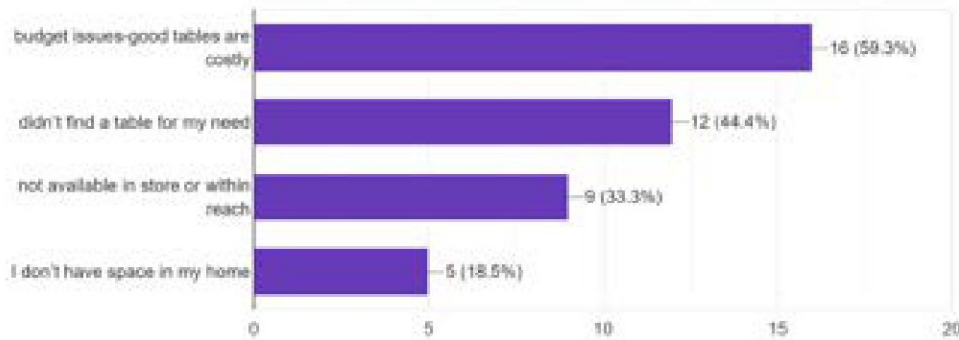
Would you like to upgrade your work desk?

31 responses



Why have you not upgraded the work desk yet?

27 responses



If your reason is not listed in the previous question, please mention it here

4 responses

I would like to replace my current table with new well designed table with minimal cost and sufficient area

Temporary living + work situation. Would invest more time and effort if it was permanent

Just inertia. We accept the table we think we deserve.

I don't have enough experience of working from home. But whenever I get this opportunity I prefer to work on my bed -> with bed table. 🙄🙄

Insights gained from user survey

Major issue analysed from the survey is that people are ready to upgrade their desk but the one with full feature is out of their budget.

Many considered that work from home is a temporary situation and that is why they did not want to spend a lot on such furniture.

5.2.3. USER INTERVIEW



User 1

Name: Mr. Subhash Muthukumar
Gender: Male
Occupation: Project Manager
Location: Mysore



User 2

Name: Ms. Dipika Rajput
Gender: Female
Occupation: IT professional
Location: Lucknow



User 3, 4, 5

Occupation: Design student

Here is a fixed table with a long table top to keep all the stationery and devices related to study.

Since a designer in general need a lot of tools and devices as compared to a professional working from home, there is requirement of more storage space and better organisation of products for a clutter free space.

Some of the problems identified with their desk were,

- Too many devices and tools on table top
- Cluttered space
- Movement restriction, body aches in longer sitting
- Additional power unit for multiple devices
- Fixed table hence restricted orientation of table
- No dedicated space or storage for products
- No wire management



5.2.4. INSIGHTS GAINED

Key insights gained from **user 1** over video call:

1. Current table is not adjustable for height
2. Wrist and arm pain due to no support
3. Cannot just keep it anywhere due to power restriction
4. Need additional power extension to connect multiple devices
5. Fear of food/ beverage spillage on table
6. Not able to maintain organised desk
7. Tired of long sitting
8. Uses both hands for different task so there is need for good hand movement

Key insights gained from **user 2** over video call:

1. Current table is not adjustable for short height
2. Wrist and arm pain due to no support
3. Need additional power extension to connect multiple devices
4. Fear of food/ beverage spillage on table
5. Unorganised wire and desk
6. No visual comfort since room is closed while working
7. Need some greenery around
8. Tired of long sitting

Related products Identified

- Laptop 
- Laptop charger 
- Mouse 
- keyboard 
- Mobile & charger 
- Water bottle 
- Notebooks 
- Table lamp 
- Printer 
- Spectacles 
- Paper clips, stapler 
- Extension board 
- Speaker 
- Earphone 
- Modem 
- Stationery items 
- Sticky notes / scissor/ clip etc. 
- Coffee mug 
- Hard drive, pendrive, etc. 
- Sanitizer 
- Id card 

5.2.5. PROBLEM IDENTIFICATION

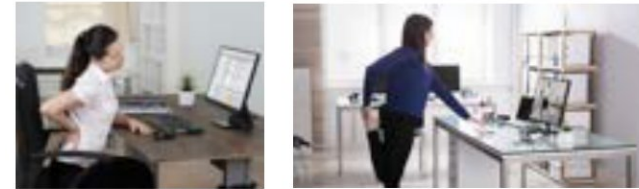
1. Context

Due to pandemic, there has been a shift in work from home culture for IT professional and this has impacted them in multiple ways. People have adapted to different style of working at home. While some use a proper office desk many use a very basic table or a bed table or dining table or sit on floor. This has led to issues like body aches, mental stress, long sitting, body movement restriction



2. Design problems

- a. **Ergonomics** – human factors, comfort, body aches, movement restrictions



- b. **Usability** – space management, accessibility of products behind the laptop is difficult



- c. **Industrial design** – furniture standardization, manufacturing consideration, transportations, services, maintenance, safety



6. DESIGN

6.1. INITIAL DESIGN BRIEF

To design a smart work station for “work from home” scenario for people working from home (IT industry) for better product accessibility, organization, sitting and standing work posture accommodation.

Need of the project

To make smart and more user-friendly table to accommodate their work from home lifestyle

Motivation

I myself having worked as IT engineer can empathize with the challenges faced as an IT professional and also studying online for first year of m.des has given me the experience and motivation to think of different ways of improvement in the existing work desk available in market

Target market

Furniture manufacturer



Target user

- **Primary user** – People working from home
- **Secondary user** - everyone else who require desktop to work or study from home



IT professionals



Students



Others

6.2. SCOPE OF PROJECT



Compact yet enough storage space



organizers to fulfil user needs – clutter free space



some aesthetic to make them feel close to nature



Better ergonomics



height adjustment



Task planning solution



Power nap solutions



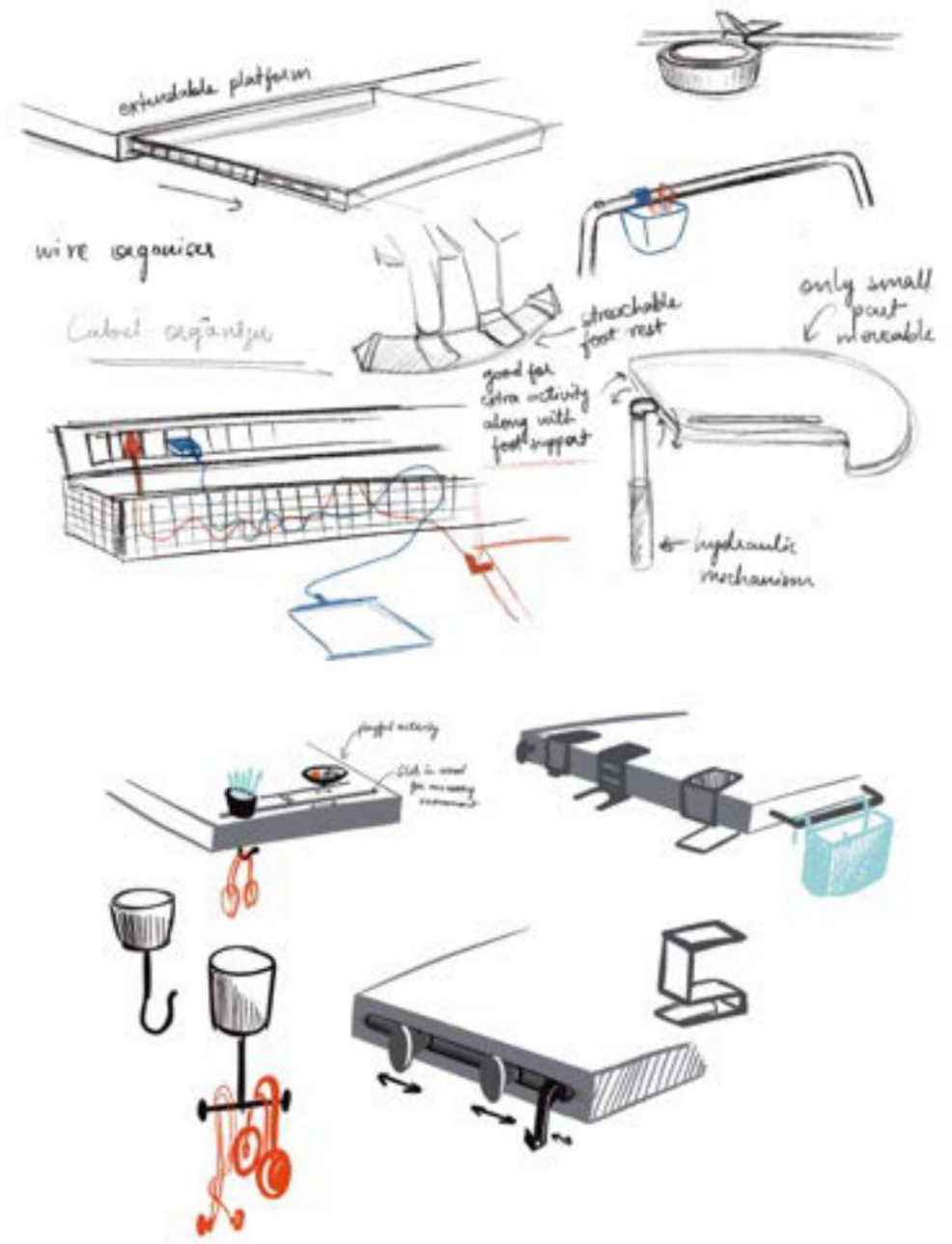
Food storage solution

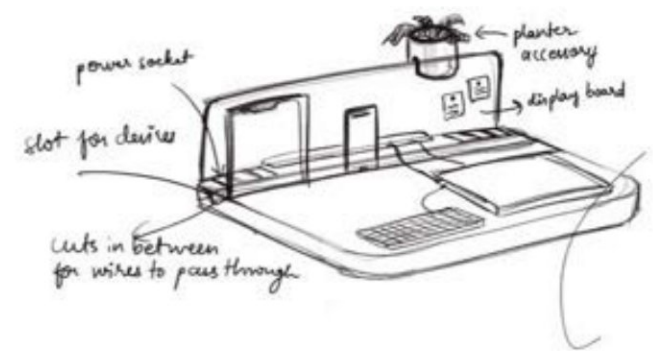
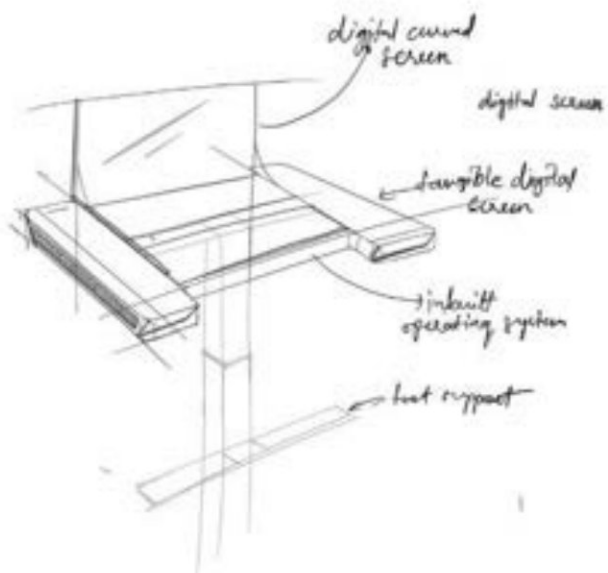
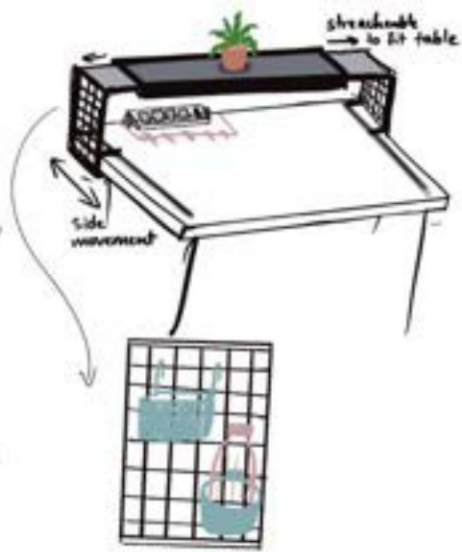
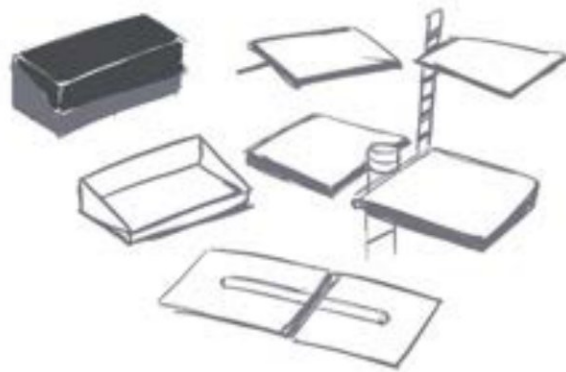
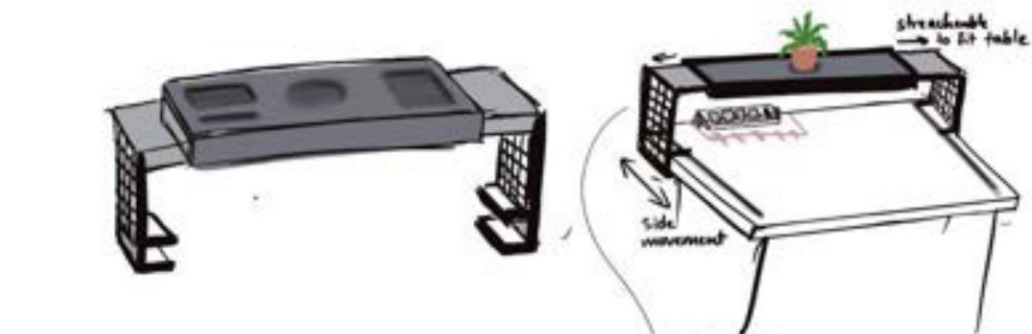


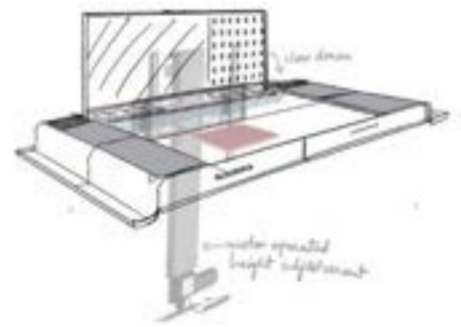
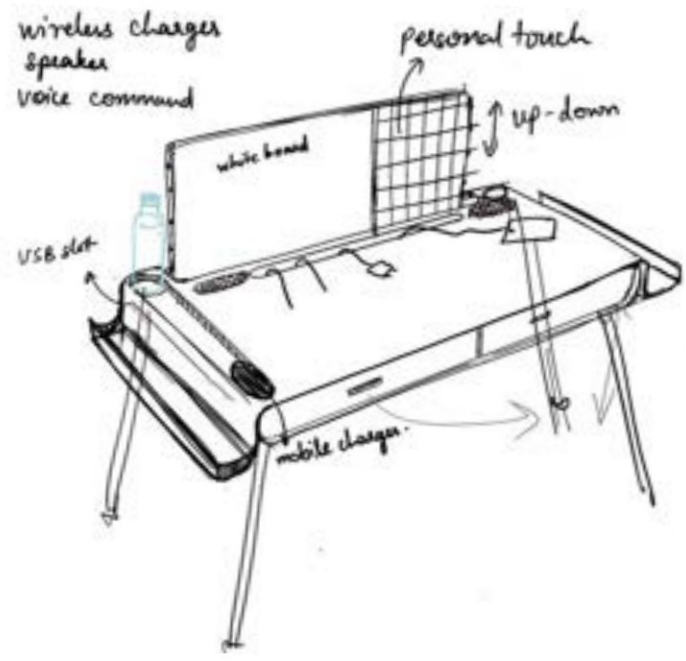
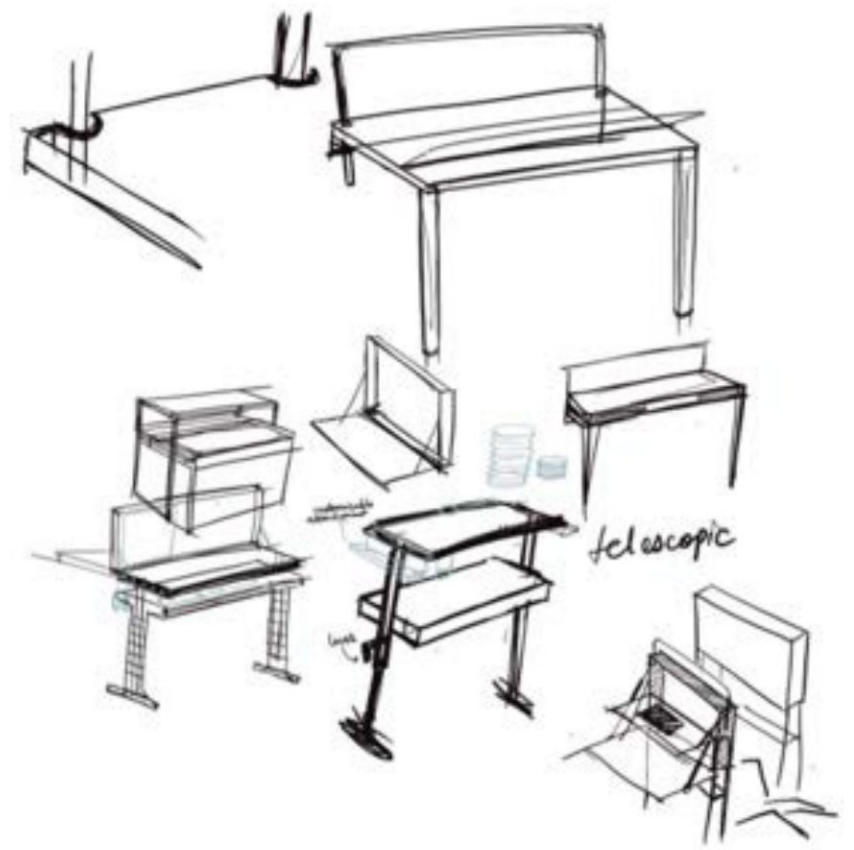
Water bottle storage solution

6.3. DESIGN IDEATIONS

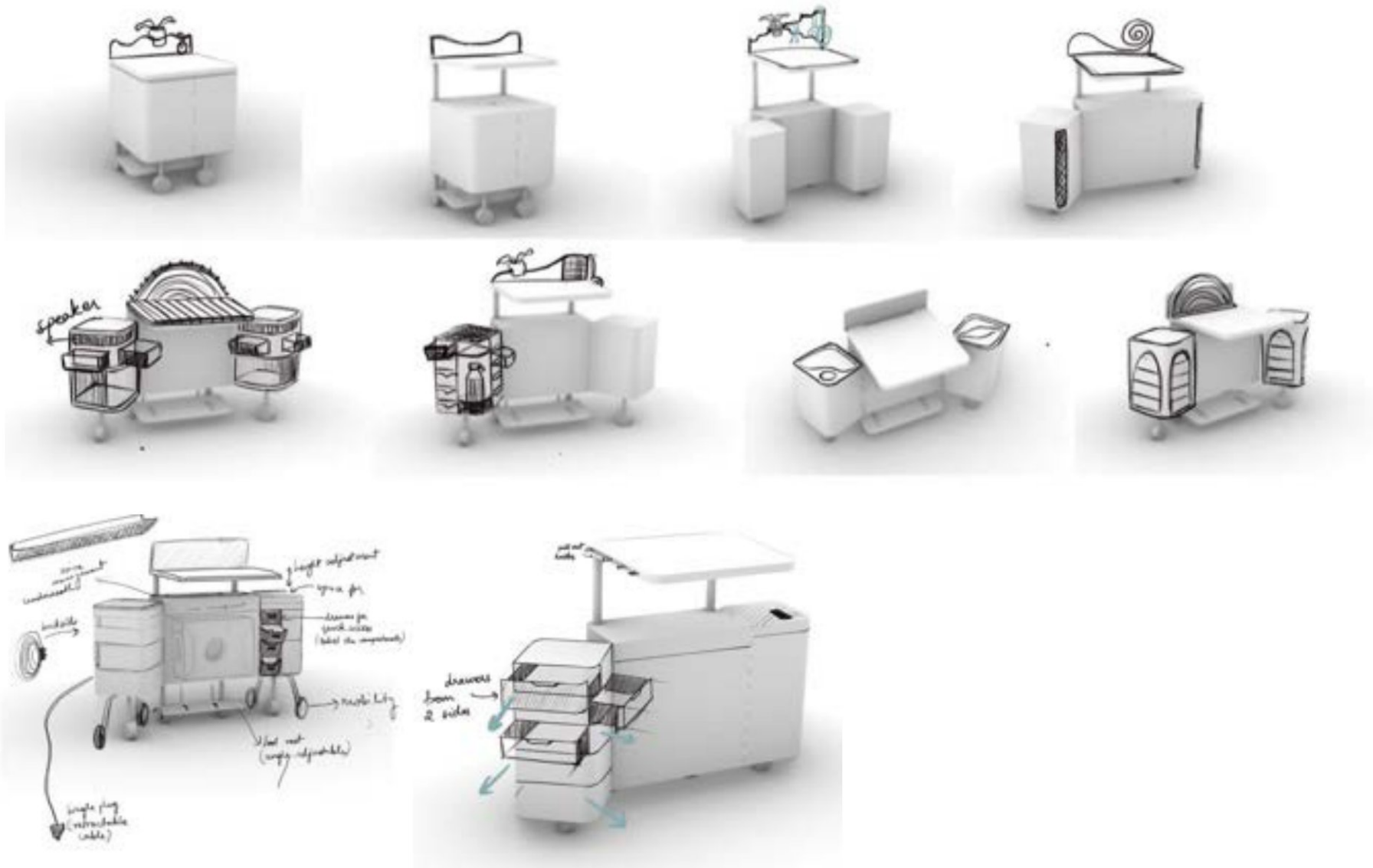
Product features – slider, drawers, wire managers, organisers etc







Block model ideations



6.4. CONCEPT GENERATION

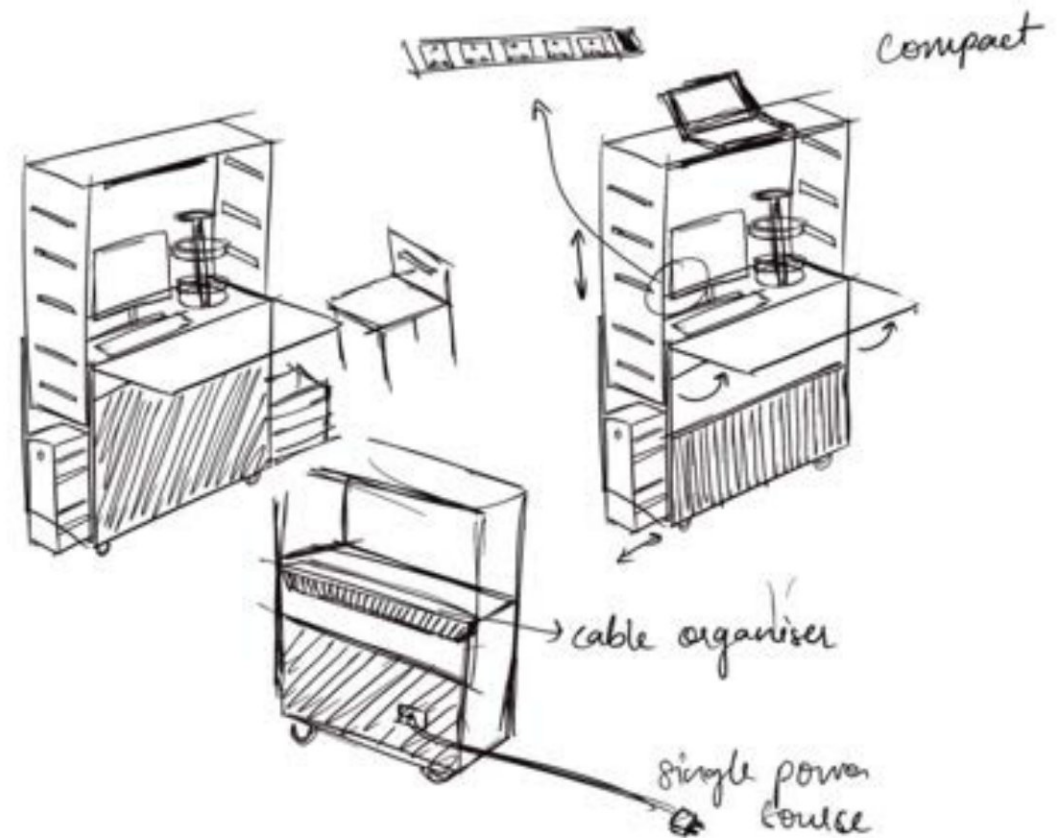
6.4.1. CONCEPT 1

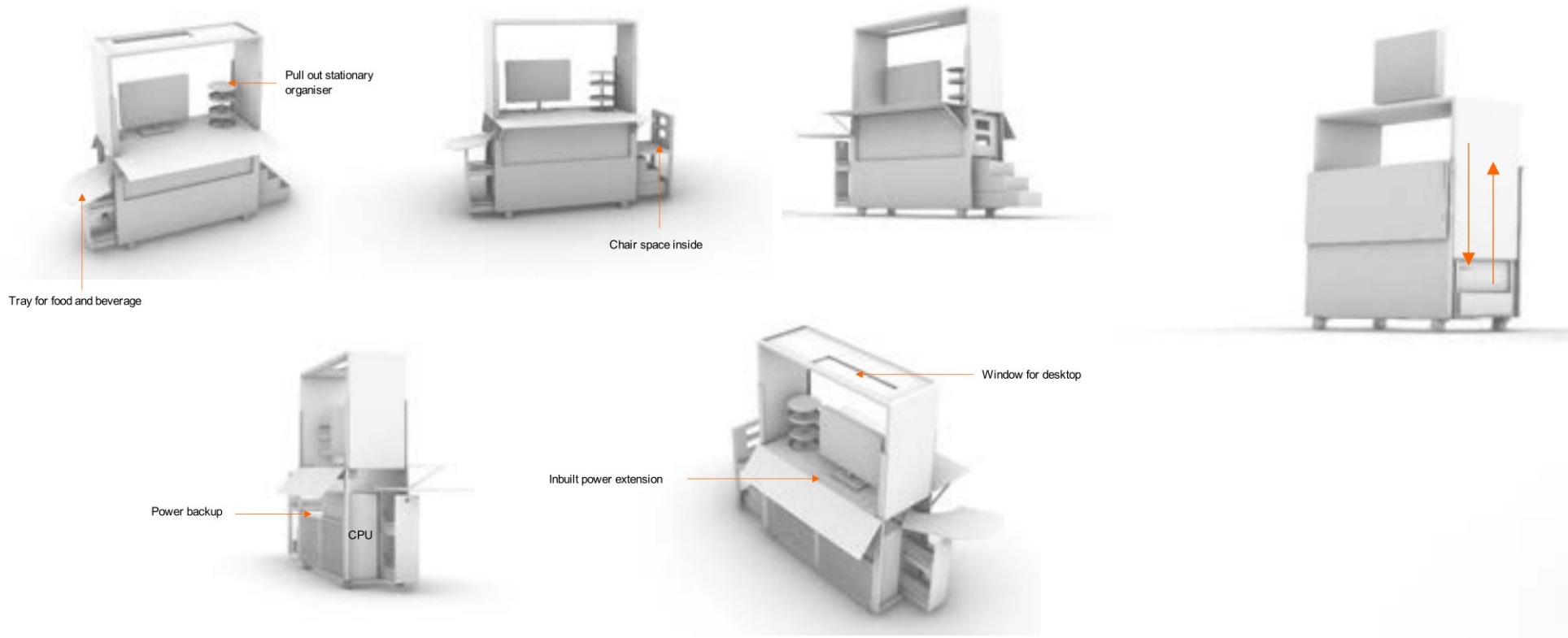
Compact and self-sufficient mobile work desk

Key features:

- Portable
- Space saving
- Height adjustment
- Battery backup

The first concept is to make the table compact, self-sufficient, portable and yet not compromise on the key functionality of work desk. It will be a wholesome smart table to fulfil user requirement.

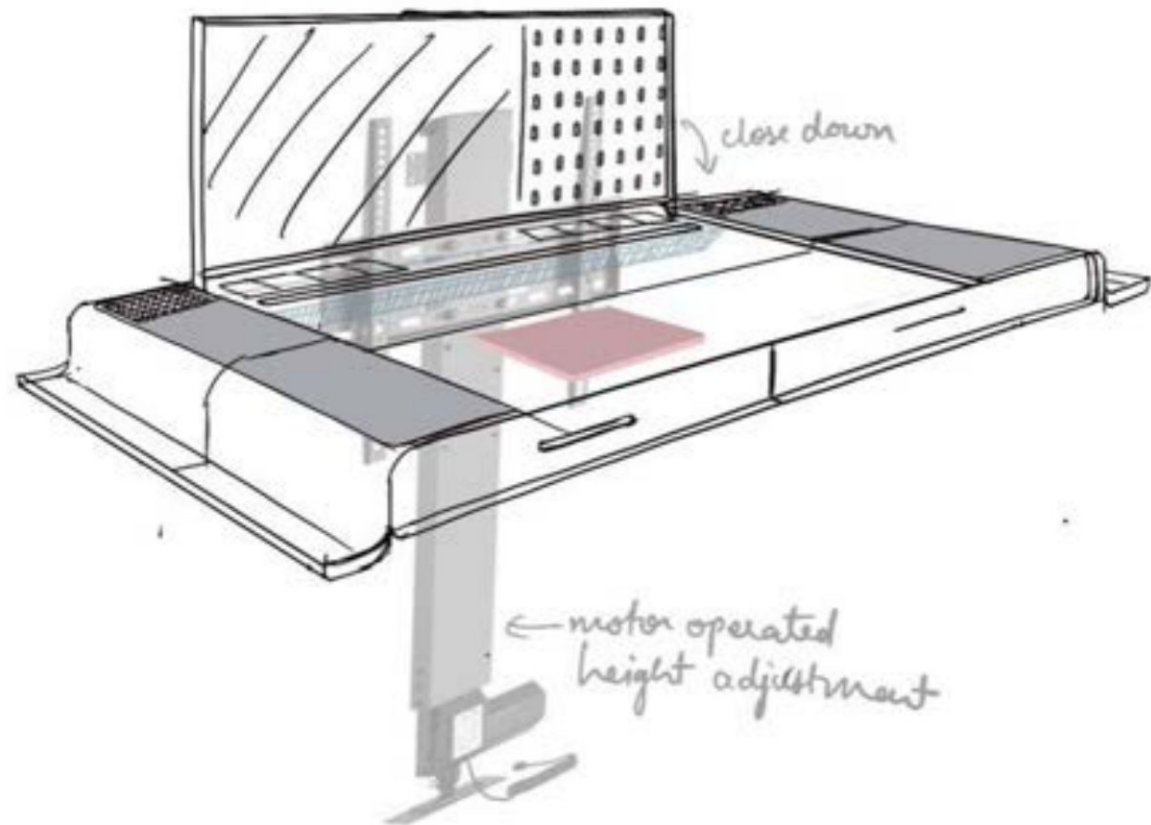


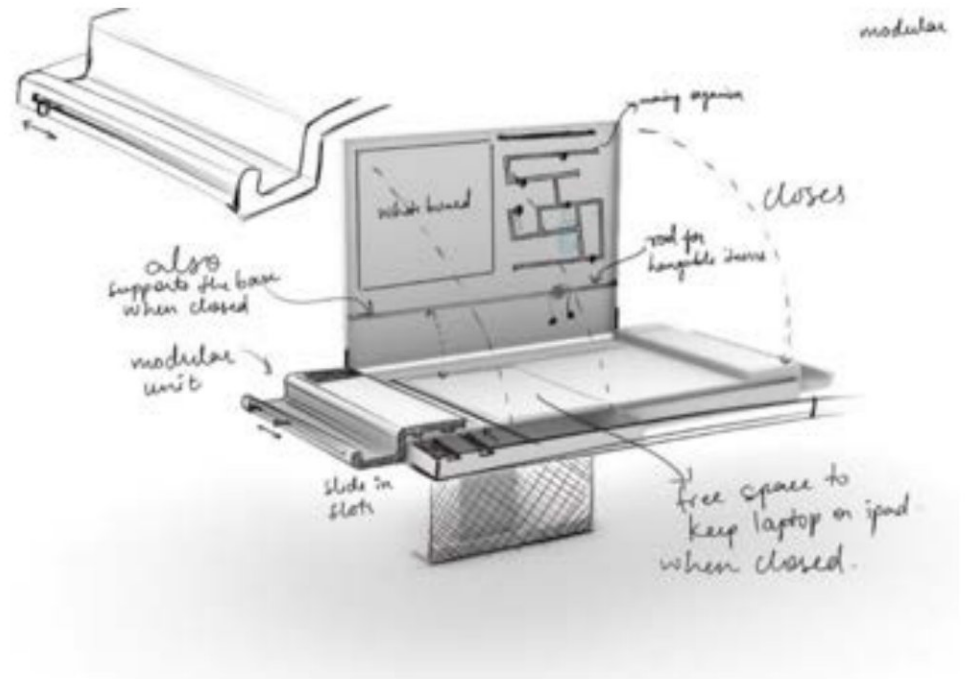
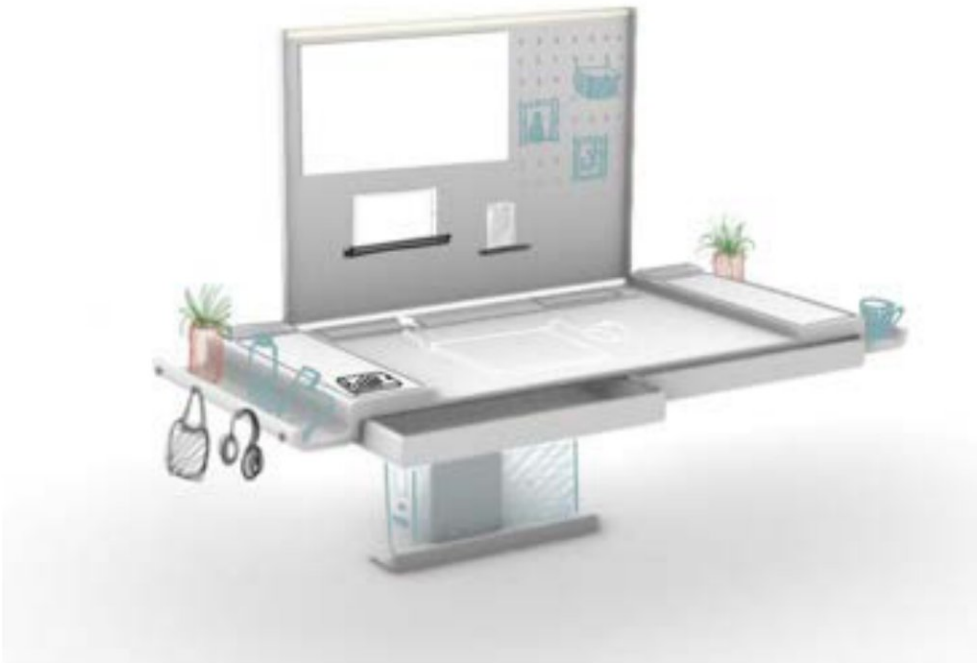


Minimal Wall mount height adjustable smart work desk

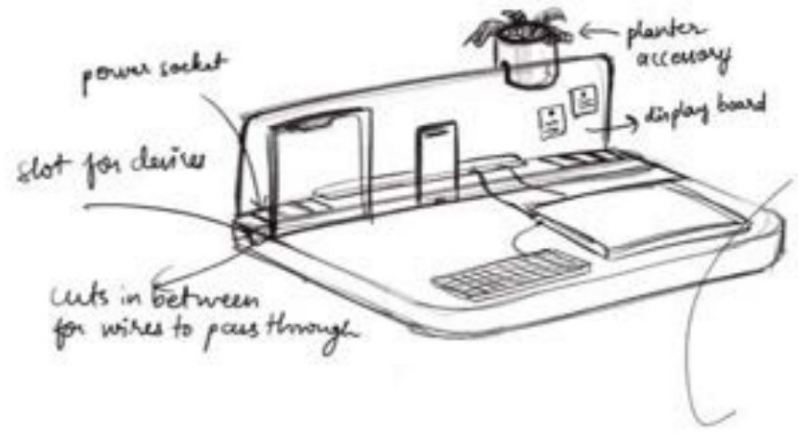
Key features:

- Wall mount Height adjustment
- Wireless charging
- Smart voice command activation
- Inbuilt speaker
- Minimal aesthetics





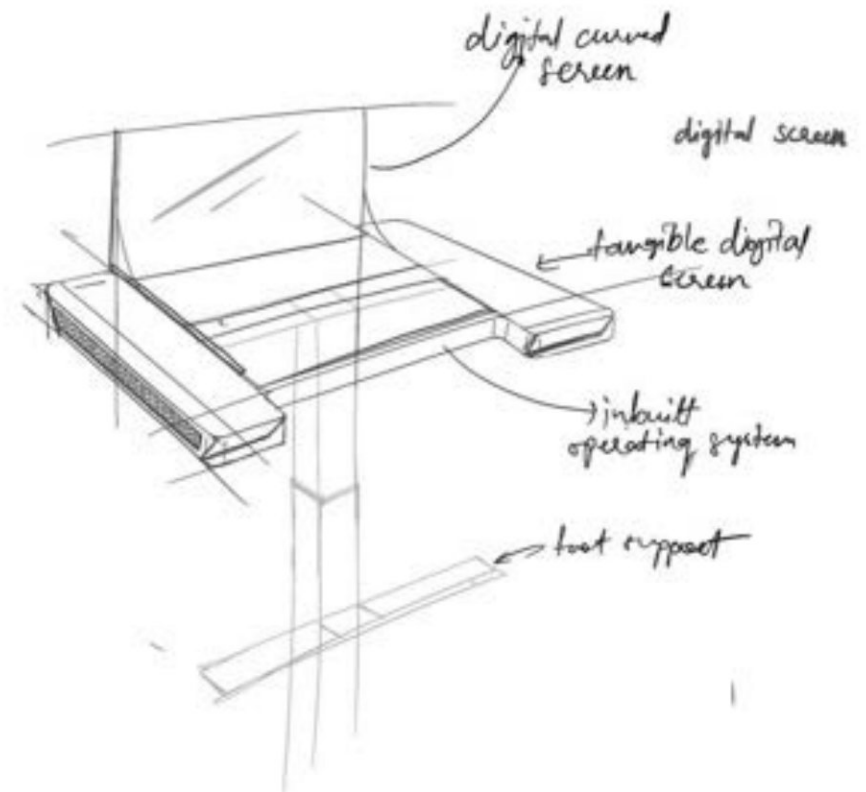
https://www.amazon.in/Vertical-Motorized-Controller-Adjustable-Bracket/dp/B08MLNHDTZ/ref=asc_df_B08MLNHDTZ/?tag=googleshopdes-21&linkCode=df0&hvadid=397005783307&hvpos=&hvnetw=g&hvrand=3325529013765878479&hvpone=&hvptwo=&hvqmt=&hvdev=c&hvdvmdl=&hvlocint=&hvlocphy=9062235&hvtargid=pla-1107463725343&psc=1&ext_vrnc=hi



6.4.3. CONCEPT 3

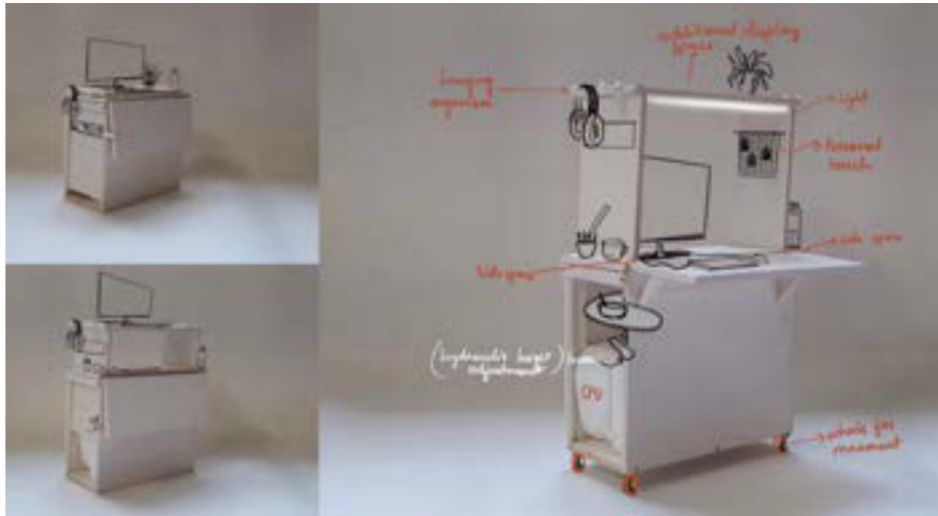
Futuristic smart work desk to eliminate multiple devices**Key features:**

- Inbuilt screen table top
- Tangible product detections and interaction
- Smart voice command activation
- Inbuilt speaker
- Can be Wall mount or movable

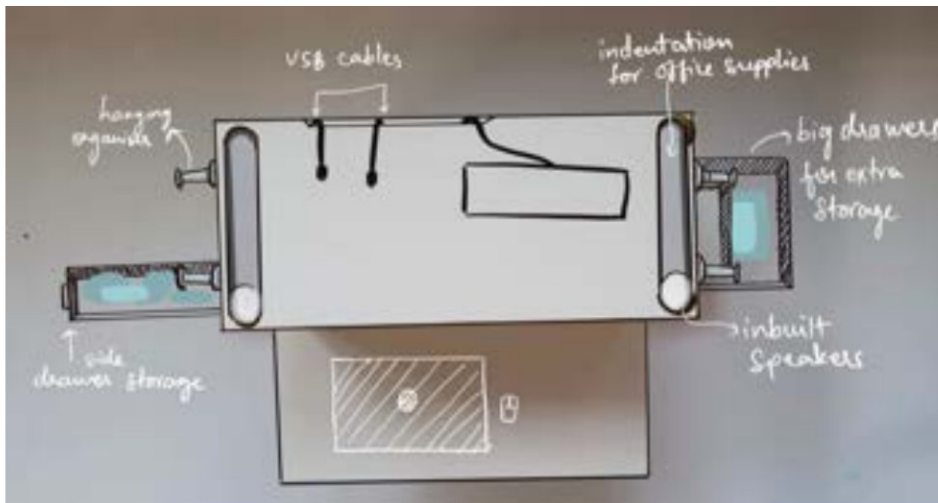


6.4.4. MOCK UP

Concept 1 mock-up



Concept 2 mock-up

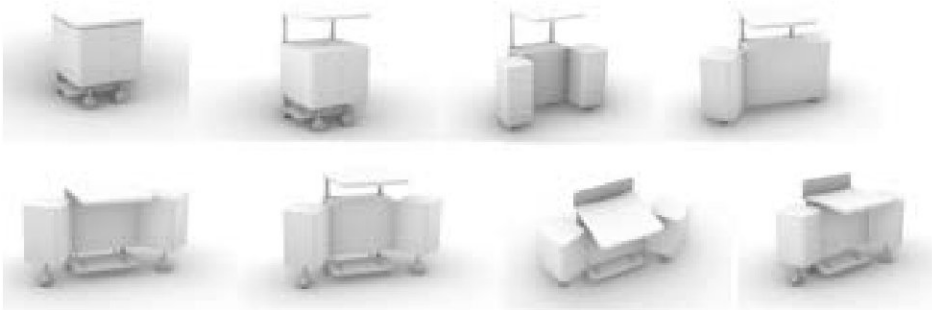


6.5. CONCEPT DEVELOPMENT

Concept development for the concept 1 with the help of block model and sketches

6.5.1. 3D BLOCK MODEL

Basic block model

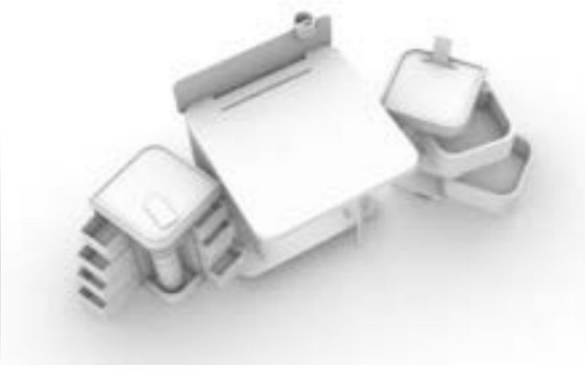
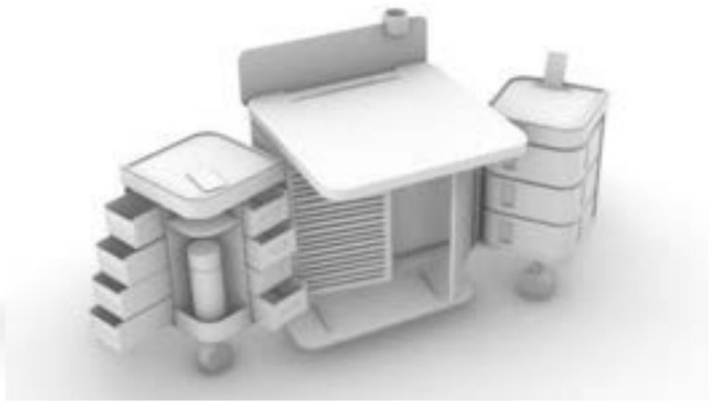
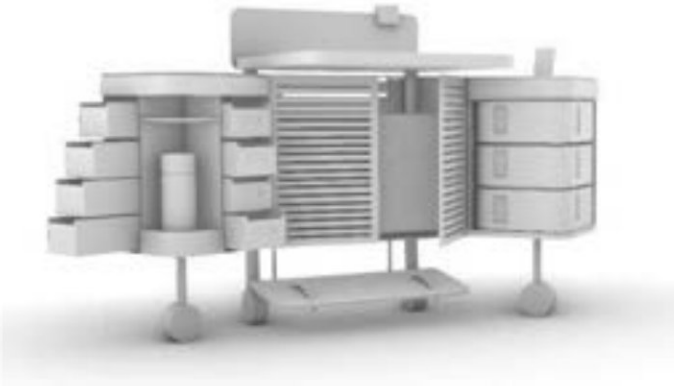


Doodles over basic model for visualization



6.5.2. FUNCTIONAL DETAILS THROUGH BLOCK MODEL





6.6. CONCEPT EVALUATION

6.6.1. CRITICAL ANALYSIS

Evaluate each design concept against garvin's 8 dimensions of quality and rate it on the scale of 1 to 10

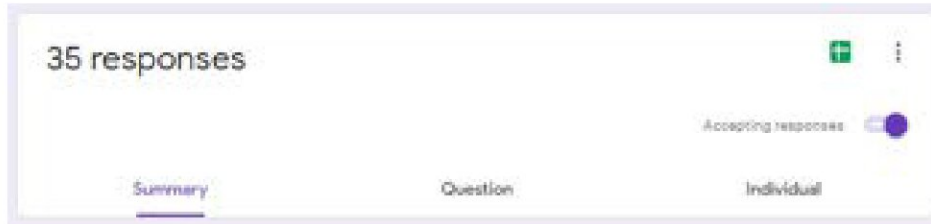
Based on the priority

1. **Reliability** – can I blindly believe it
2. **Durability** – will it stay with me for long time (will it go without diminishing with time)
3. **Features** – fundamental functions and additional functions above that (add-on)
4. **Conformance** – follows industrial standards (materials it can use, dimensions, ergonomics)
5. **Serviceability** – is it easily fixable, how easily can it be maintained
6. **Aesthetics** – aesthetics that strikes your eyes – visual quality
7. **Perceived Quality** - defined by form, how one feel when they look at it, it sometimes is also derived from brand ex; tesla
8. **Performance** – overall usability, reliability

User Evaluation

To understand the preference of various features, I created a google form with questions to understand what user actually desires to see in their work desk and based on that I can prioritize the functional and aesthetic features of the work desk. Below is the form for the same.

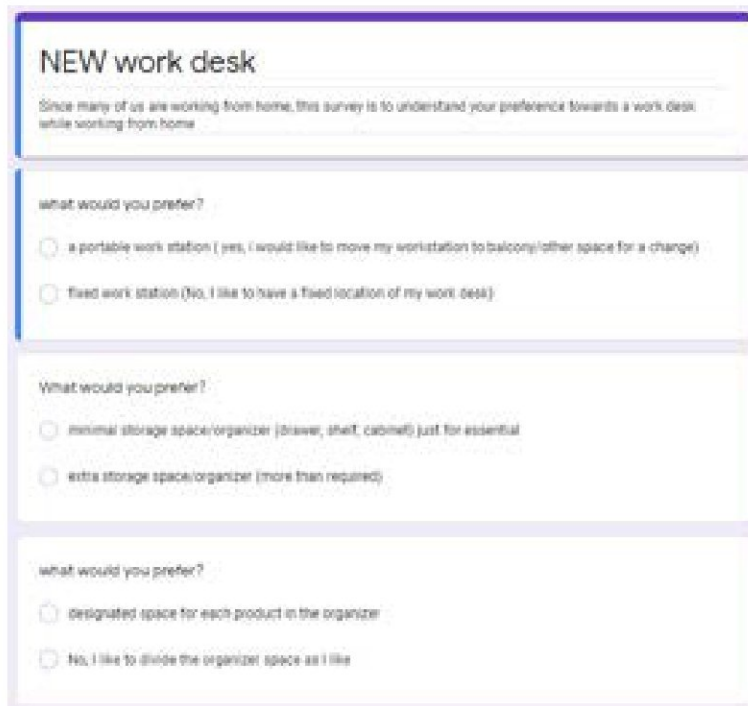
There were total of 35 responses.



35 responses

Accepting responses

Summary Question Individual



NEW work desk

Since many of us are working from home, this survey is to understand your preference towards a work desk while working from home

what would you prefer?

- a portable work station (yes, i would like to move my workstation to balcony/other space for a change)
- fixed work station (No, I like to have a fixed location of my work desk)

What would you prefer ?


- minimal storage space/organizer (drawer, shelf, cabinet) just for essential
- extra storage space/organizer (more than required)

what would you prefer?

- designated space for each product in the organizer
- No, I like to divide the organizer space as I like

<https://docs.google.com/spreadsheets/d/1tvjY6zspn7q2PoExYQZnjKTybOTU7l8mOD7XhyqHvw/edit?resourcekey#gid=1778659048>

*Response sheet



What other features would you like to see in your work from home desk?

- height adjustment
- foot rest
- CPU space
- dedicated printer space
- task planner / whiteboard space
- food and beverage tray
- space to keep laptop bag
- in built speaker
- slack/google home assistance
- built power points
- wireless charging station

Any other feature you would like to add.

Long answer text

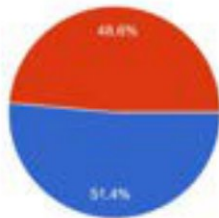
Thank you!

Surveyor: [name]

I got a good response from different users and this makes easier to analyse what a customer is looking for.

what would you prefer?

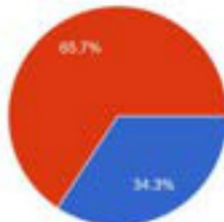
35 responses



- a portable work station (yes, I would like to move my workstation to balcony/other space for a change)
- fixed work station (No, I like to have a fixed location of my work desk)

what would you prefer?

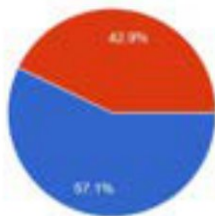
35 responses



- designated space for each product in the organizer
- No, I like to divide the organizer space as I like

What would you prefer?

35 responses



- minimal storage space/organizer (drawer, shelf, cabinet) just for essential
- extra storage space/organizer (more than required)

What would you prefer?

35 responses

Any other feature you would like to add:

14 responses

Wire tangling is big issue in desk. If possible make wire organiser for table. Headphone mount is essential which I felt. If possible, add some stress buster toys on desk. Extinction box you can add.

Provision for cutting mat surface that doubles as a mousepad, calibrations on the table surface for measuring

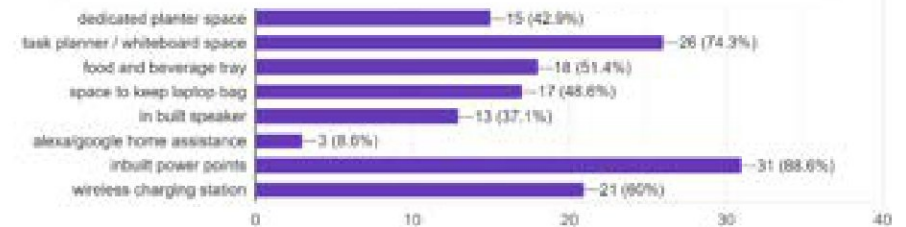
Small attached book shelf

Cable Management, VESA mount/ elevated unit for monitor. Adjustable angle drawing board support to keep ipad/wacom.

A Tilt Mechanism in the desk for a good angle to work, which will help maintain posture. Ample desk depth for versatile use.

Wire organization, slight slant angle adjustment of table top.

Would be great if it has any wire station where you can put the adapters of laptop in tray (station) which wouldn't occupy the space of the table



A place to keep papers and soft board.

Dustbin nearby

Footrest should be wood or plastic. Metal footrest in winter is painful

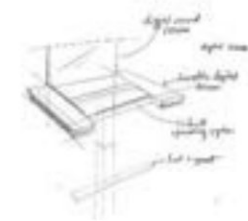
No

It would be nice to save space by maybe folding it somehow while not in use.

integrated deskpad

cozy arm-rest (cushioned)

Based on user survey on their preferences, here is the ranking on various features from 1 to 10 where 1 being the lowest and 10 being the highest.



S.no	Functional comparison	Concept 1	Concept 2	Concept 3
	Storage space			
	Visible storage (open platform)	8	9	5
	Hidden storage (drawers, cabinets)	6	8	0
	Bottle space	8	8	5
	Laptop space	8	6	9
	CPU space	8	7	9
	Stationary organiser	8	6	3
	Height adjustment	8	8	8
	Task planning solution	7	7	7
	Food space	8	5	-
	Book storage space	8	3	-
	Laptop bag storage	-	-	-
	dustbin	10	-	-
	Clear arrangement			
	Wire management	8	6	8
	Safety			
	Safety while opening drawers	6	9	-
	Safety while moving furniture	6	7	8
	Ease of furniture assembly	-	-	8
	Easy to clean	7	8	8
	Power convenience	9	9	9

S.no	Ergonomics comparison	Concept 1	Concept 2	Concept 3
	Adjust to human dimension			
	Leg room	5	7	7
	Foot support	8	-	-
	Desk height	9	9	9
	Field of vision	8	8	-
	Arm support	5	5	-
	Offer convenience - comfort	7	8	-

S.no	Aesthetic feature comparison	Concept 1	Concept 2	Concept 3
	Adjust to interior			
	Fit to corner space	8	6	7
	Fit against window	7	3	6
	Fit against wall	8	8	8
	Fit to existing furniture at home	8	8	4
	Aesthetic appeal	8	9	7
	Follow trend	7	8	3
	emotions	-	-	-
	Reflects lifestyle	8	8	9
	Satisfy special user aesthetic need (plants)	9	8	3
	relocation	9	0	8

S.no	Overall comparison	Concept 1	Concept 2	Concept 3
1	Reliability	8	8	5
2	Durability	8	8	6
3	Features	9	6	8
4	Conformance	7	7	6
5	Serviceability	7	8	-
6	Aesthetics	7	9	7
7	Perceived quality	7	8	7
8	Performance	8	7	6

	TOTAL	272	247	178
--	--------------	------------	------------	------------

6.6.2. CONCEPT FINALIZATION

6.7. FINAL DESIGN

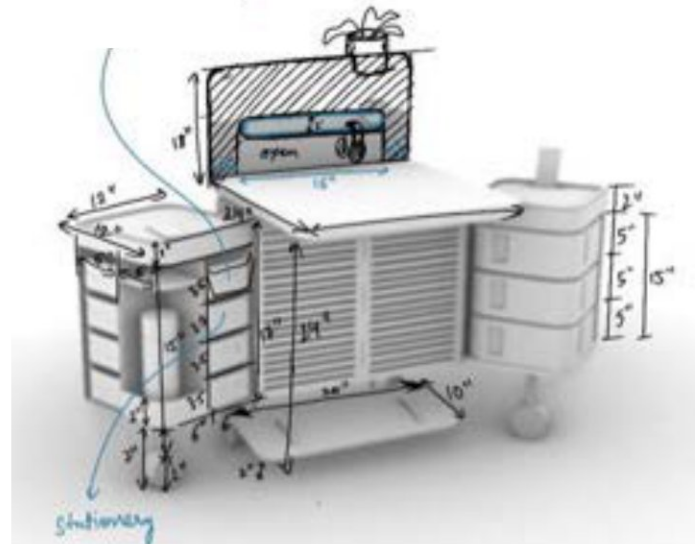
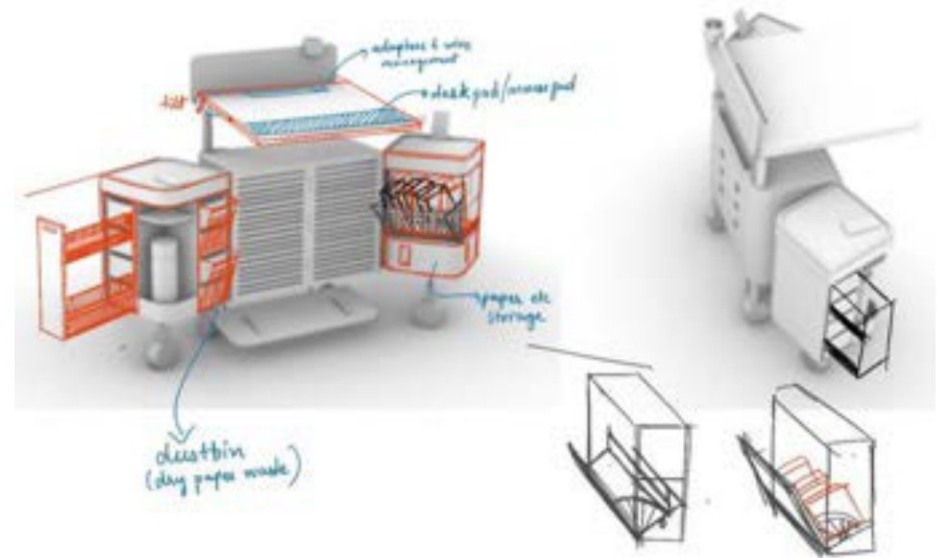
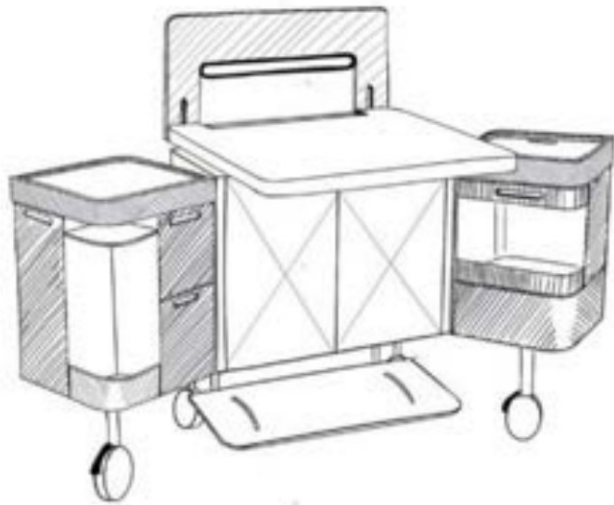
After critical analysis concept 1 which is the portable and compact work station is finalized to work further.

6.7.1. FINAL DESIGN BRIEF

To design a smart and mobile workstation for people working from home to accommodate following

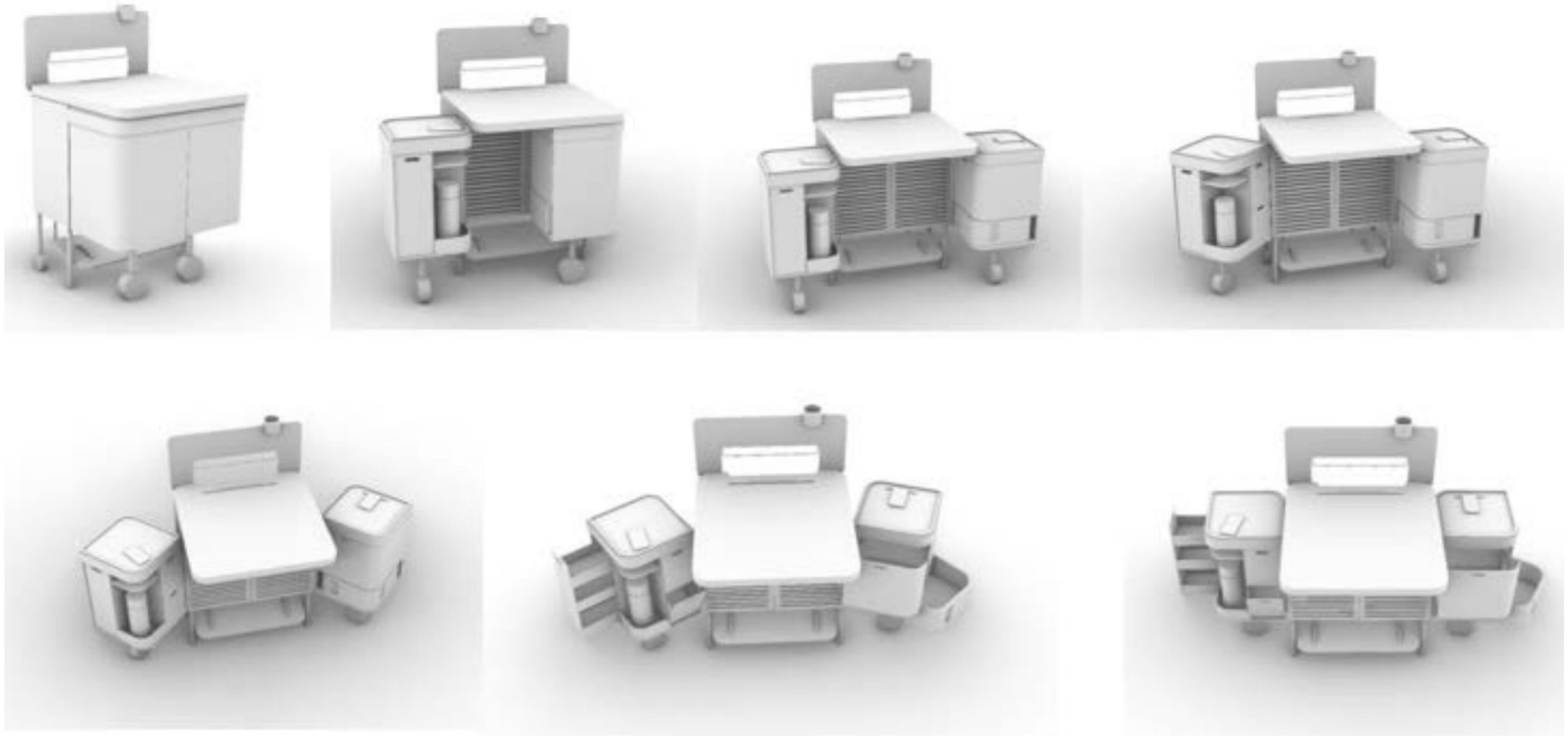
- Sitting and standing work posture
- Compact and portable
- Better devices and stationery organisation
- Better wire management
- Better functionality and accessibility

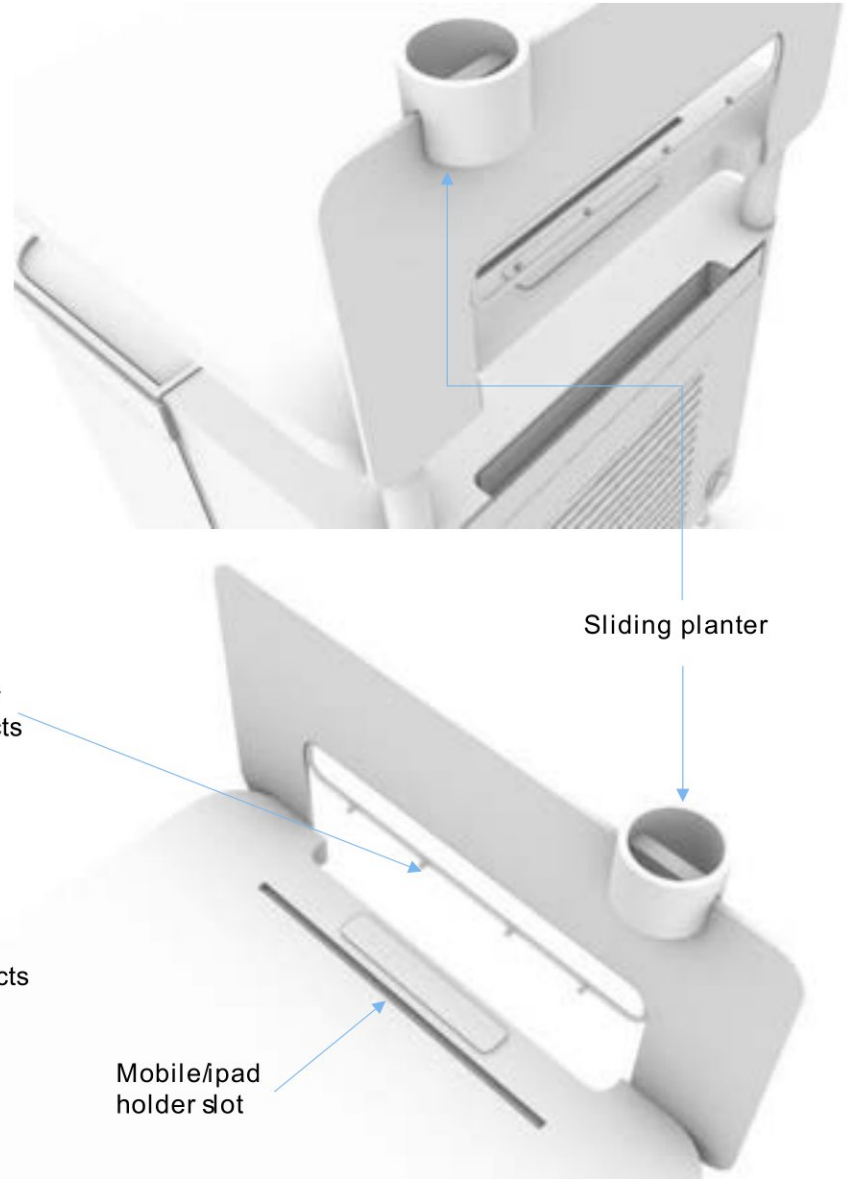
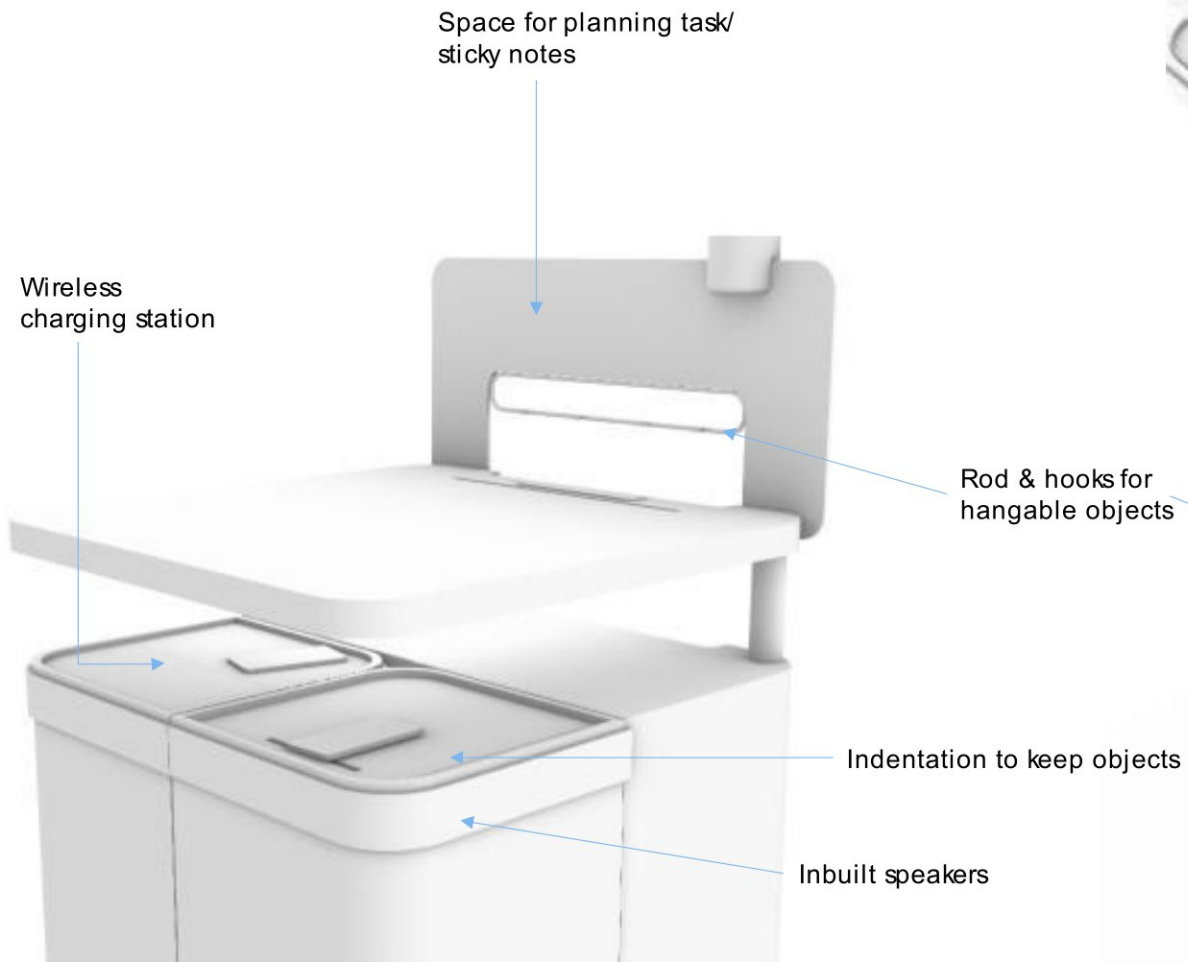
6.7.2. DESIGN SKETCHES

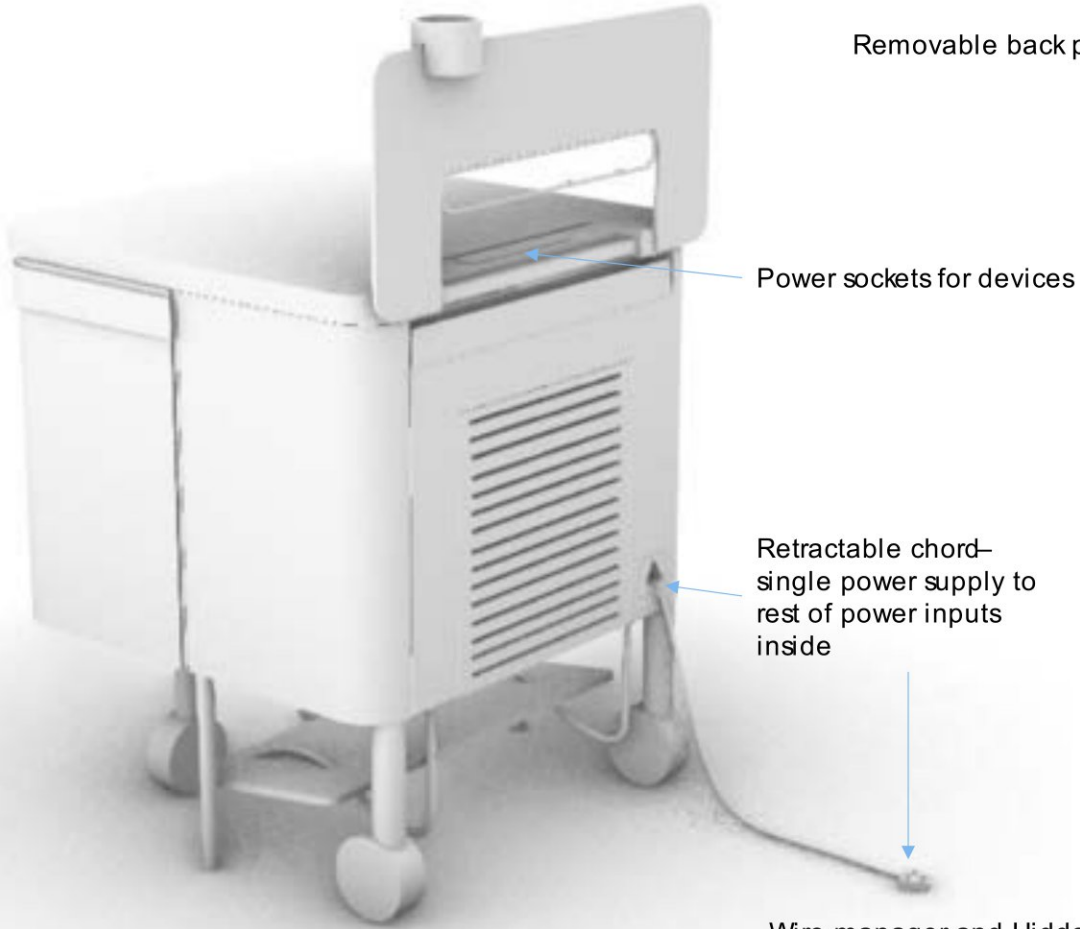


6.7.3. DESIGN DETAILS

Detailed block model





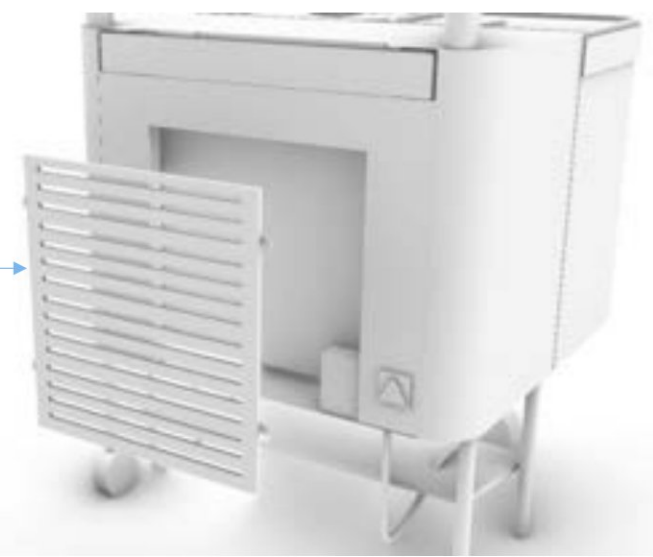


Removable back panel

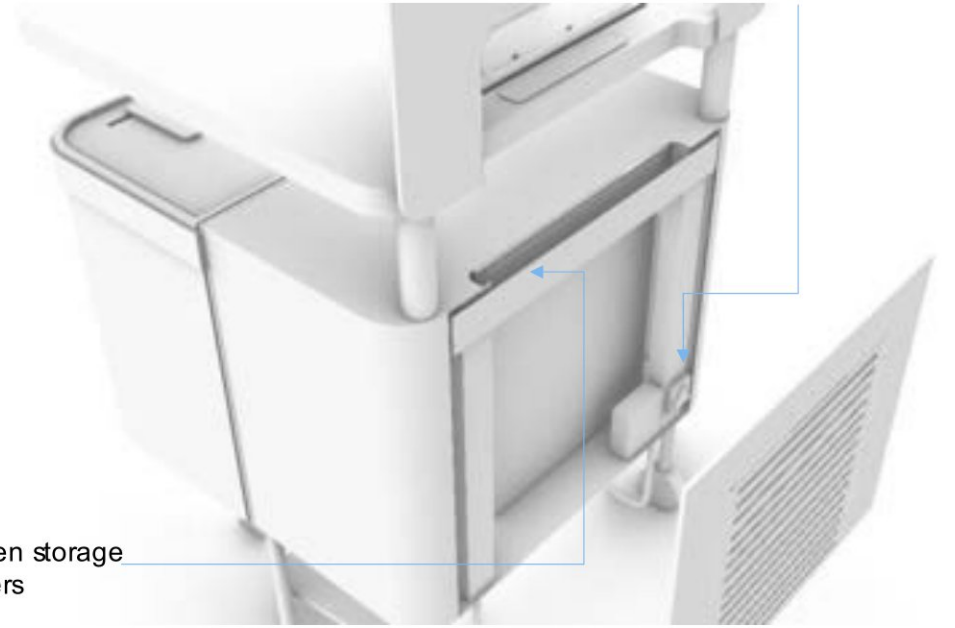
Power sockets for devices

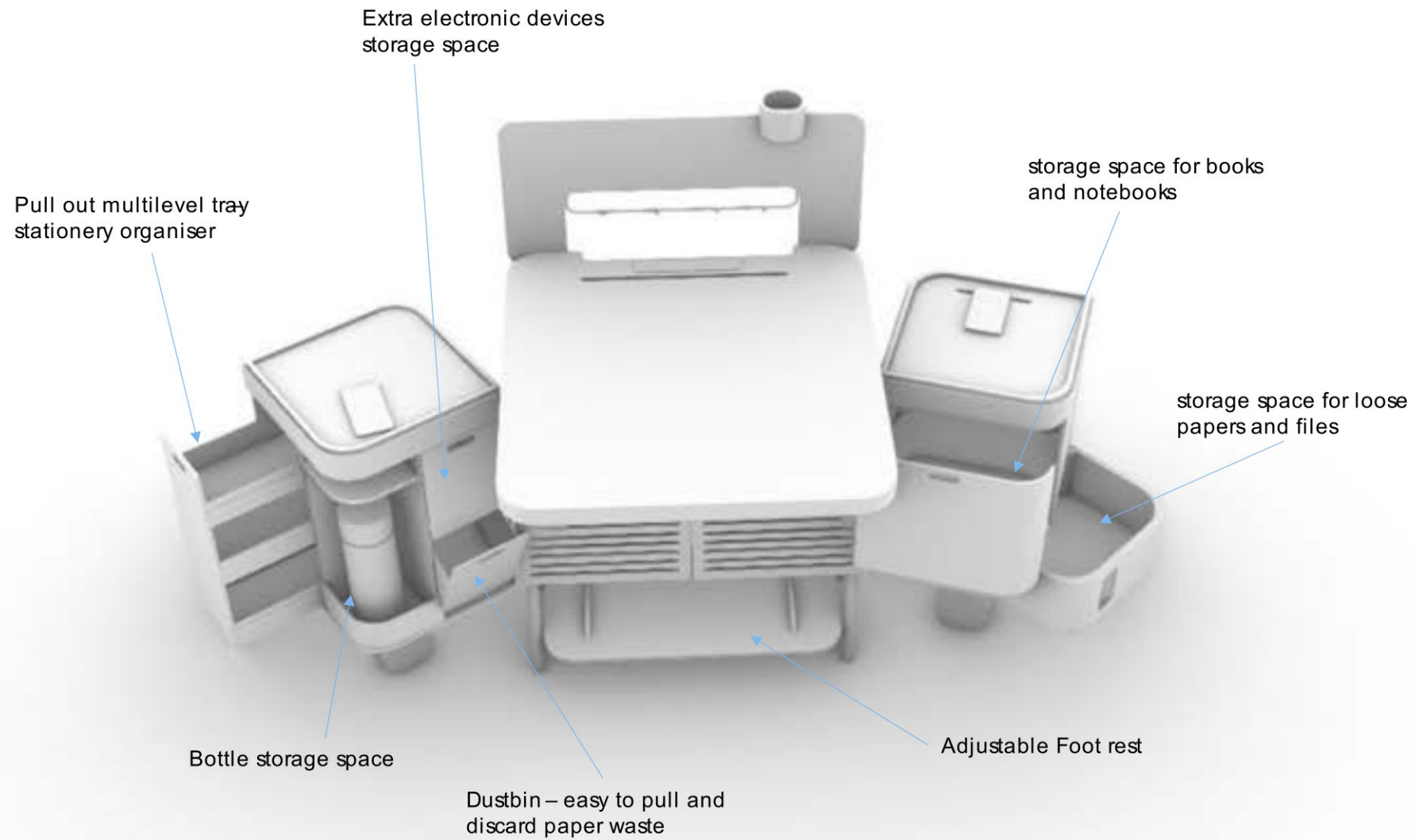
Retractable chord—
single power supply to
rest of power inputs
inside

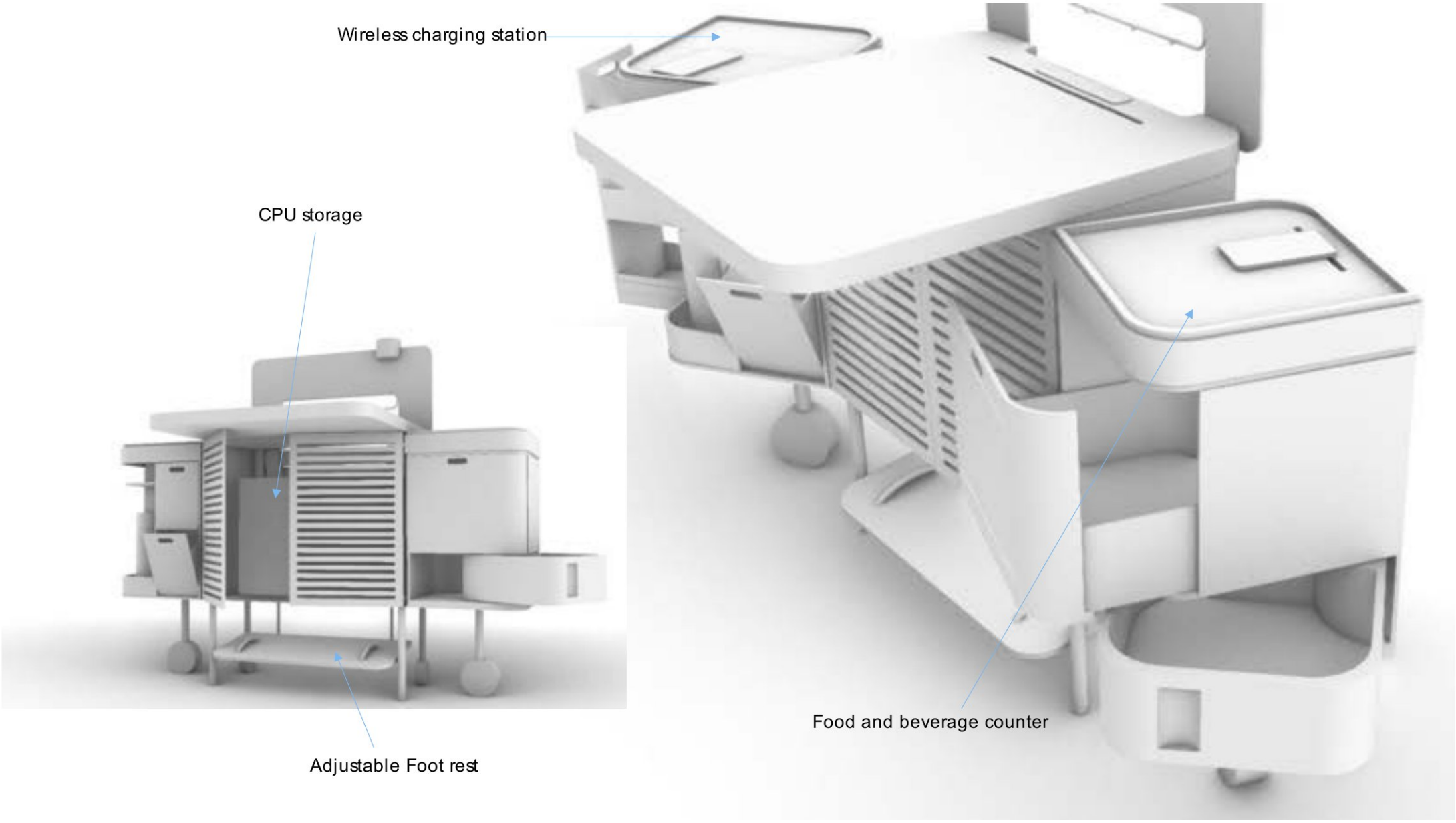
Wire manager and Hidden storage
space for charger adapters



Internal power connection







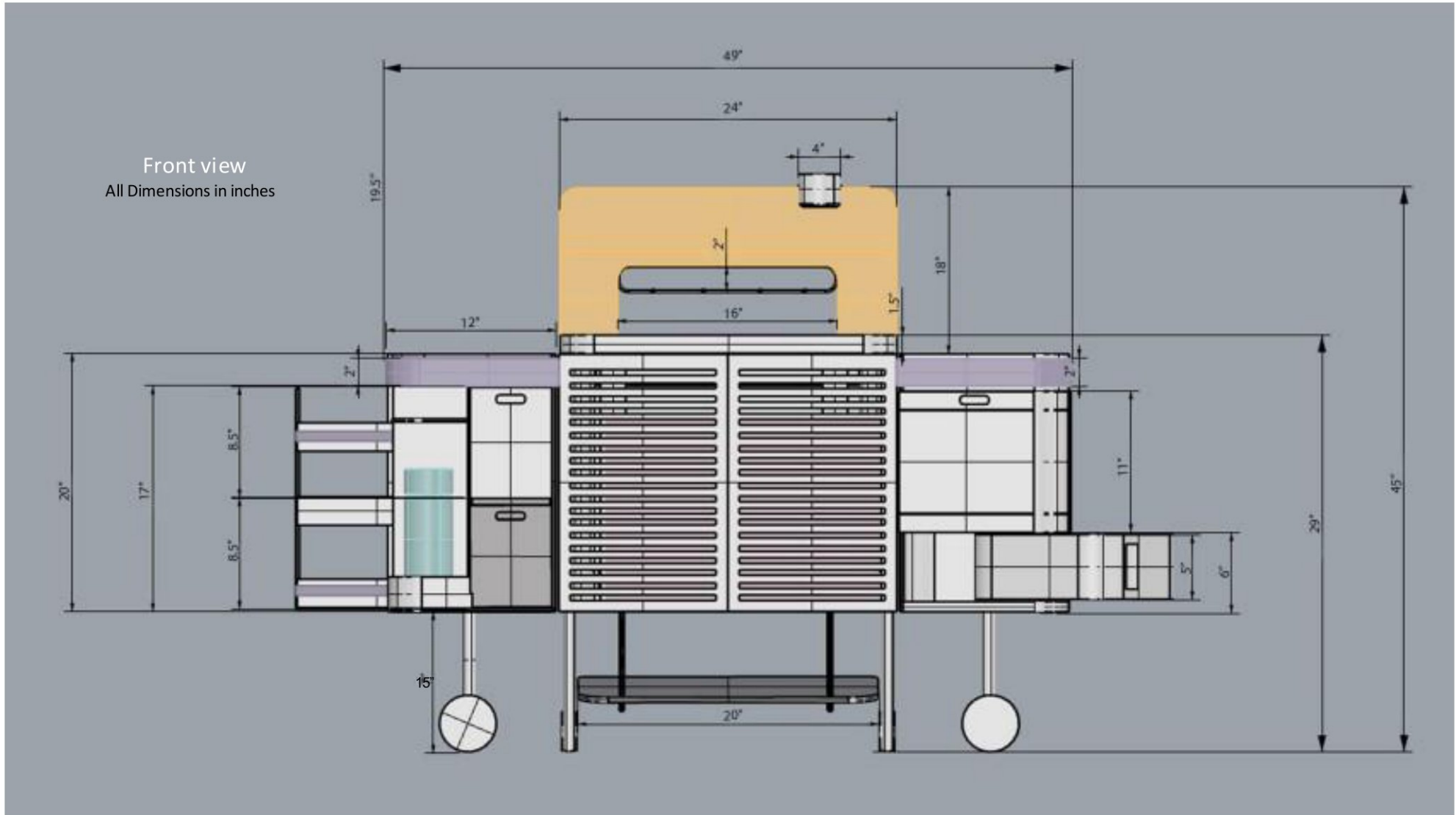
Wireless charging station

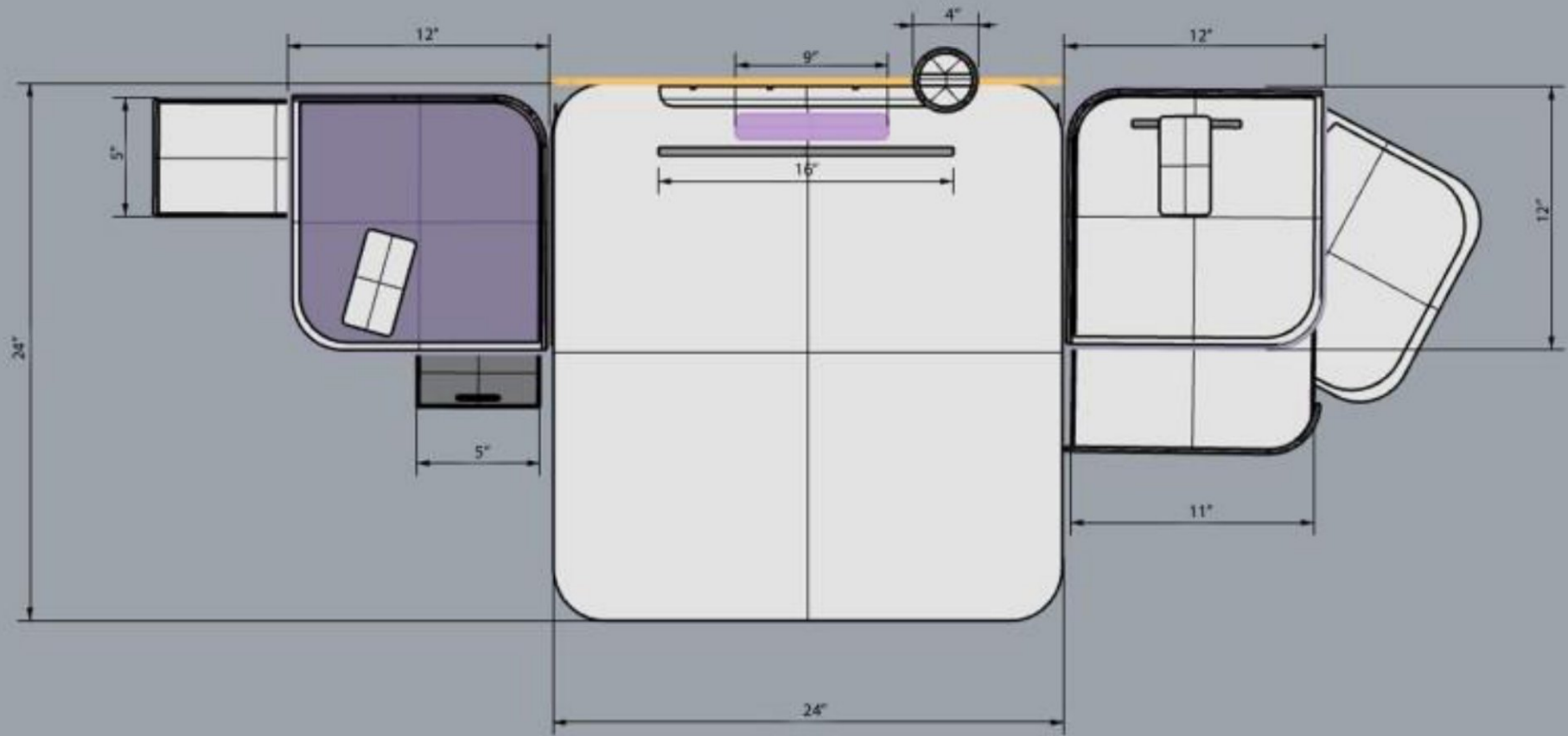
CPU storage

Adjustable Foot rest

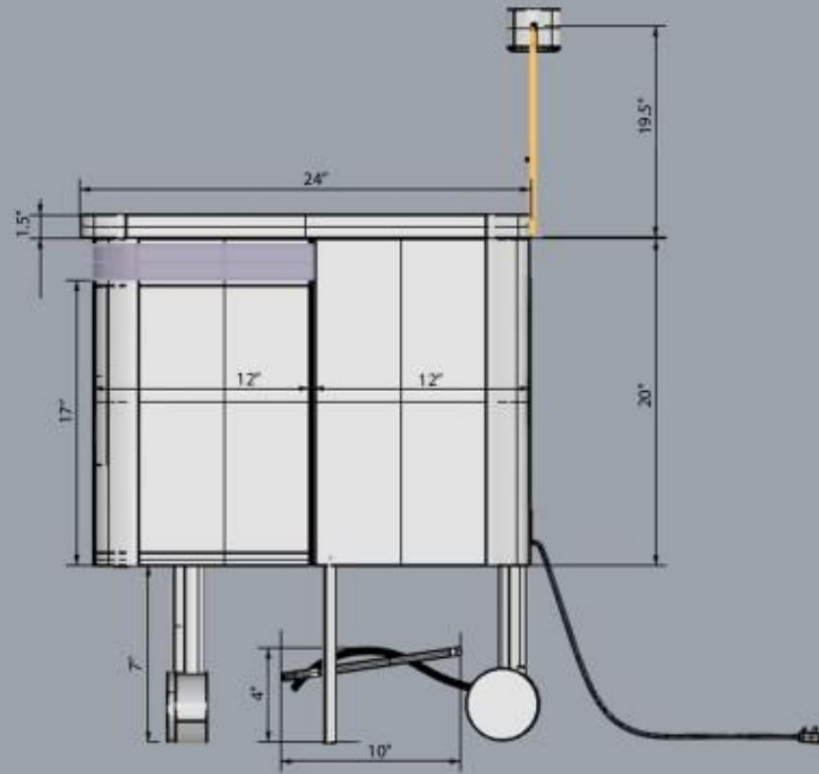
Food and beverage counter

Design dimensions





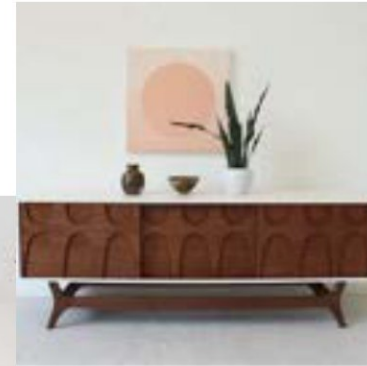
Top view



Side view

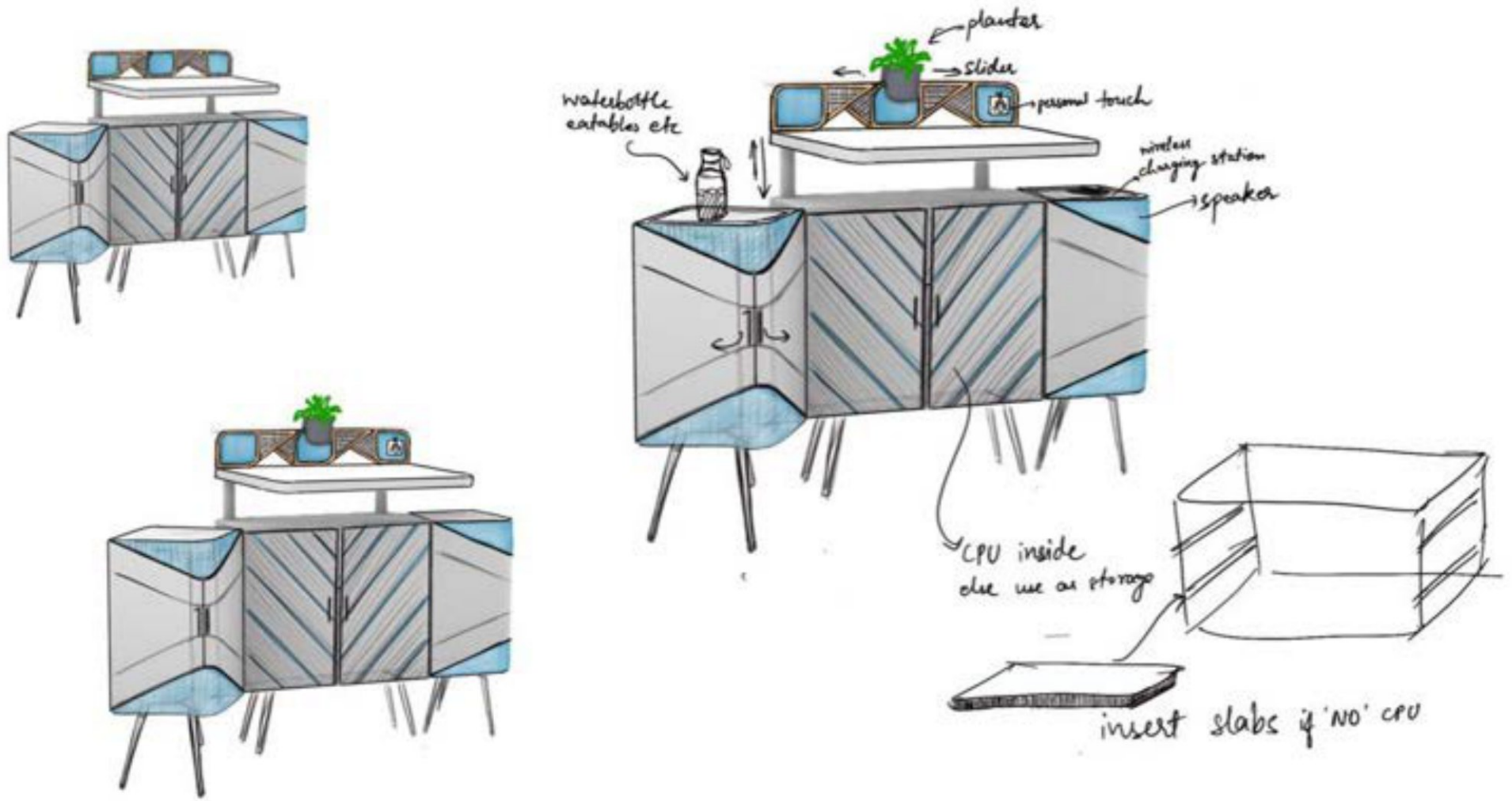
6.7.4. DESIGN STYLIZATION

Stylization mood board 1



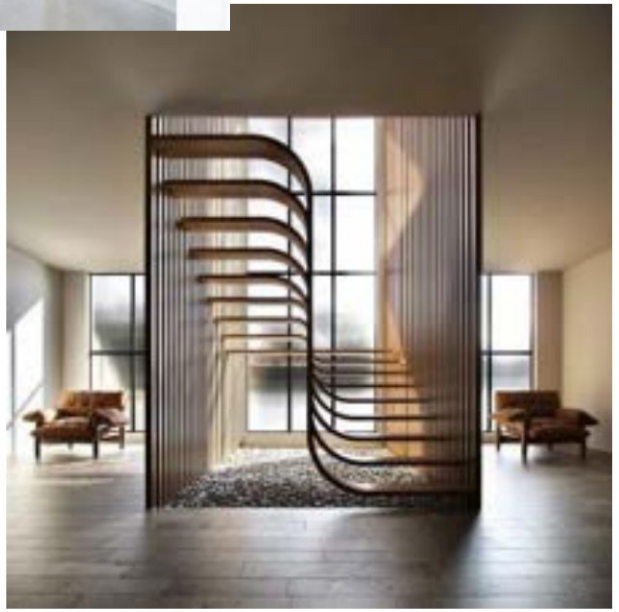
- curves
- Inclined lines
- soft
- Mid-century modern

Visualization 1

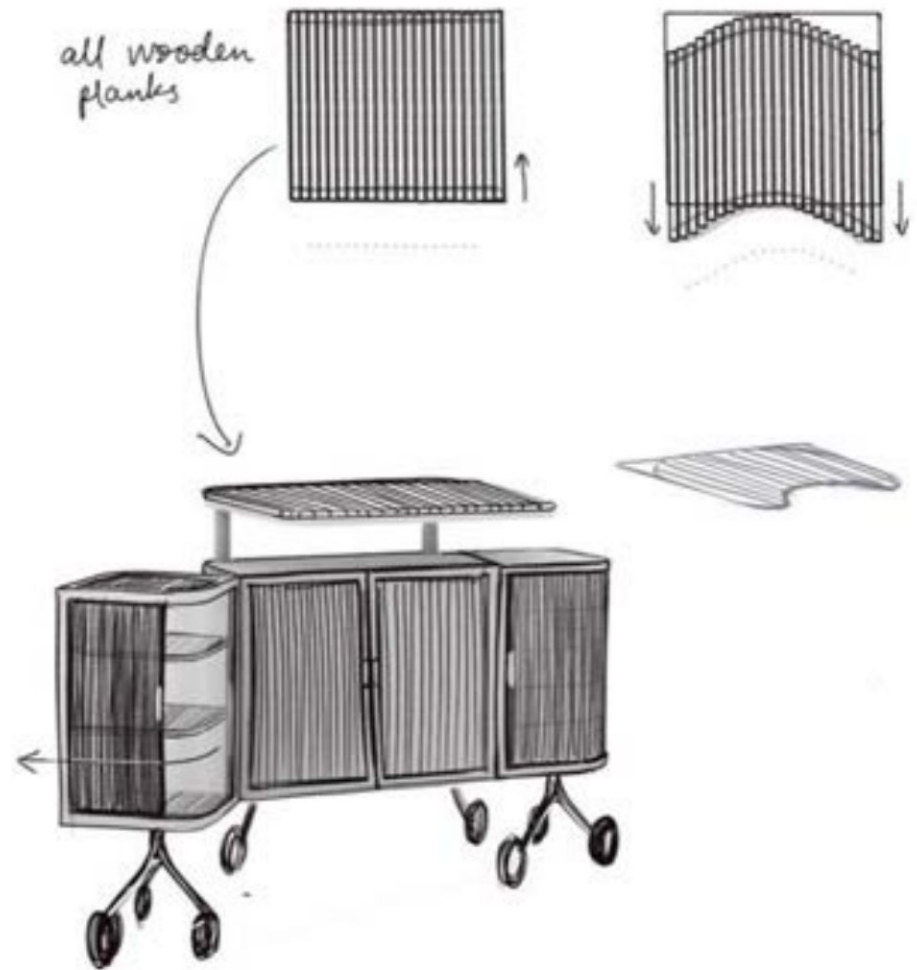


Stylization mood board 2

- Lines
- Repetition
- Cohesive
- movement



Visualization 2

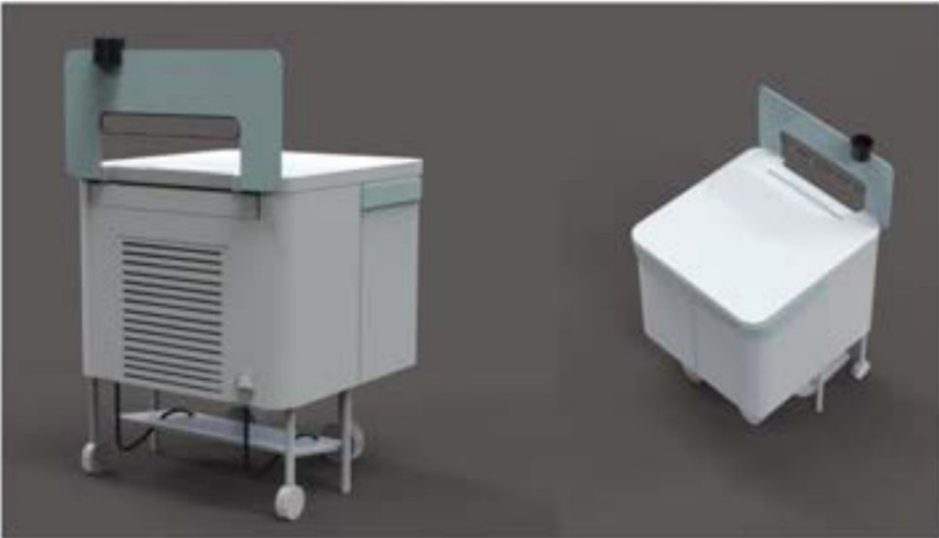
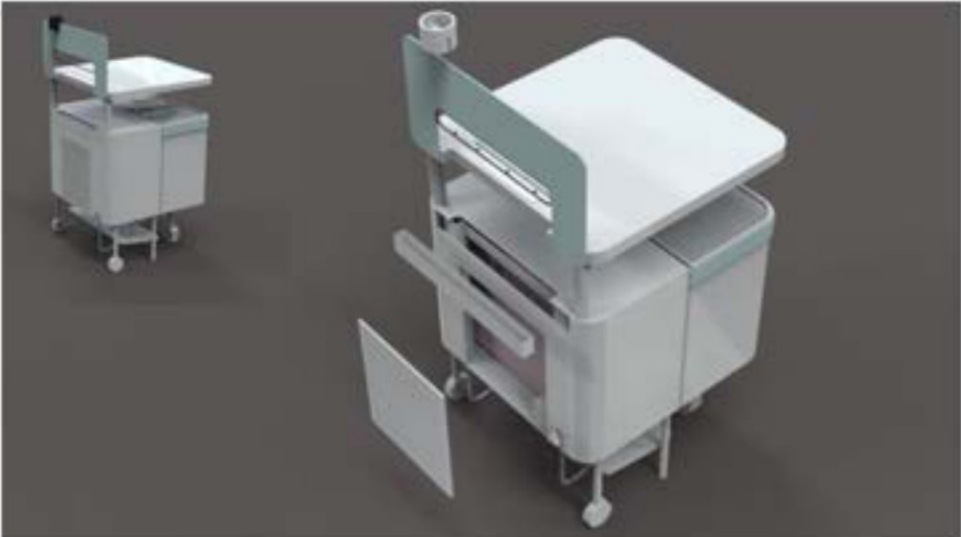


Stylization mood board 3

- curves
- minimal
- subtle
- smooth



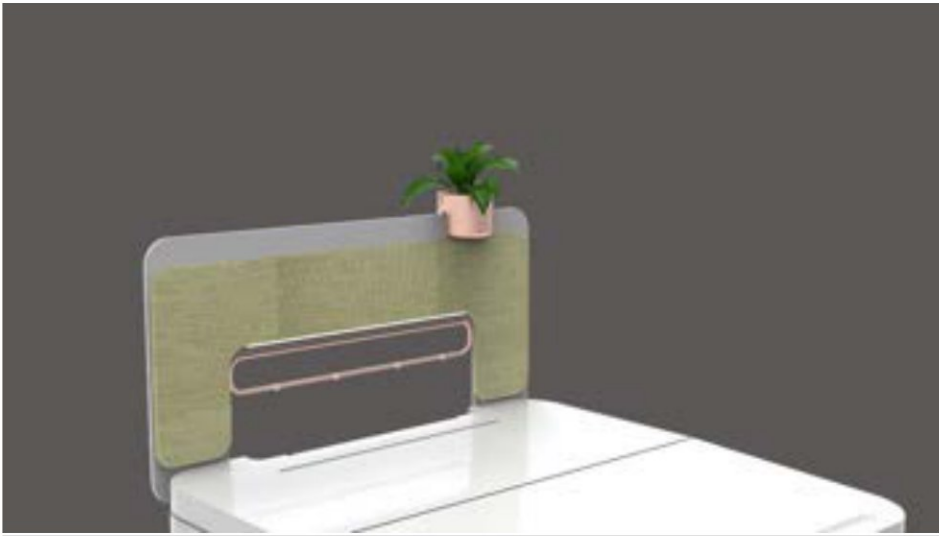
Visualization 3 – modern aesthetics

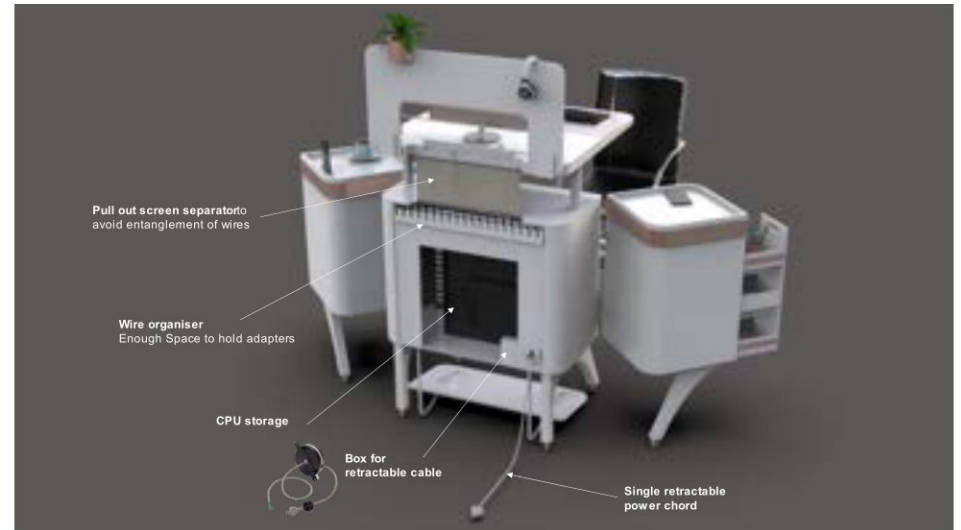


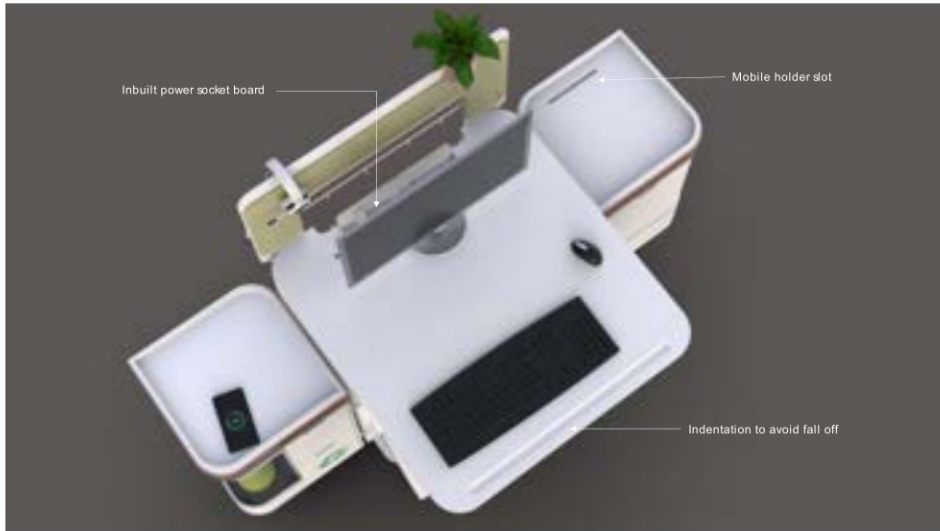
6.7.5. FINAL 3D MODEL

Smart mobile workstation









Indoor setup



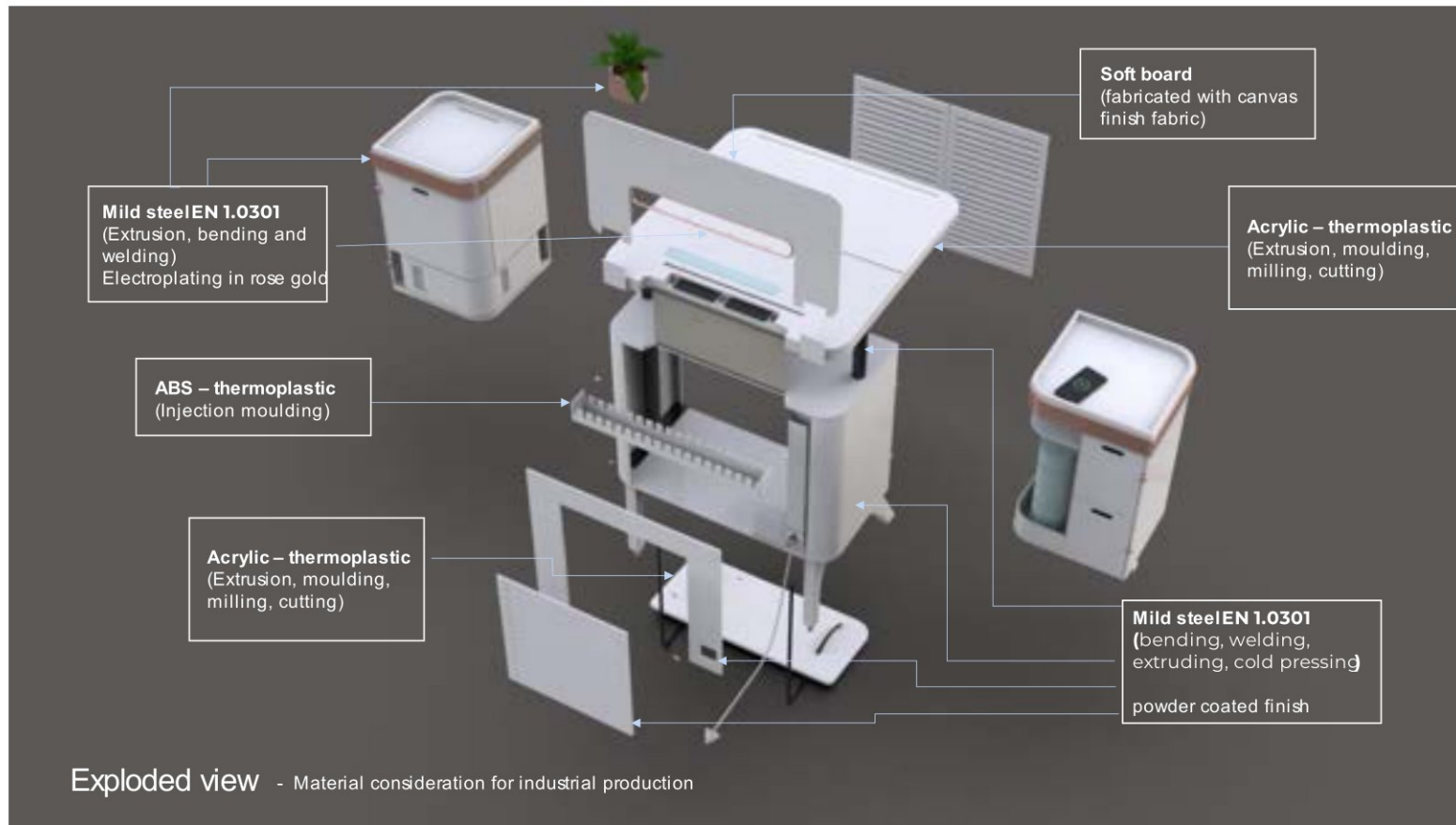
Outdoor setup



6.7.6. MATERIAL CONSIDERATION

Material consideration for industrial manufacturing

1. For structure – sheet metal (stainless steel - SS 304 grade)
2. Powder coating for clean and matt finish
3. Table top – wooden block (50mm thick)
Heat pressed laminated engineered wood (50 mm thick)
4. Drawers – ABS thermoplastic



6.7.7. FINAL DESIGN PROTOTYPE

Rig testing

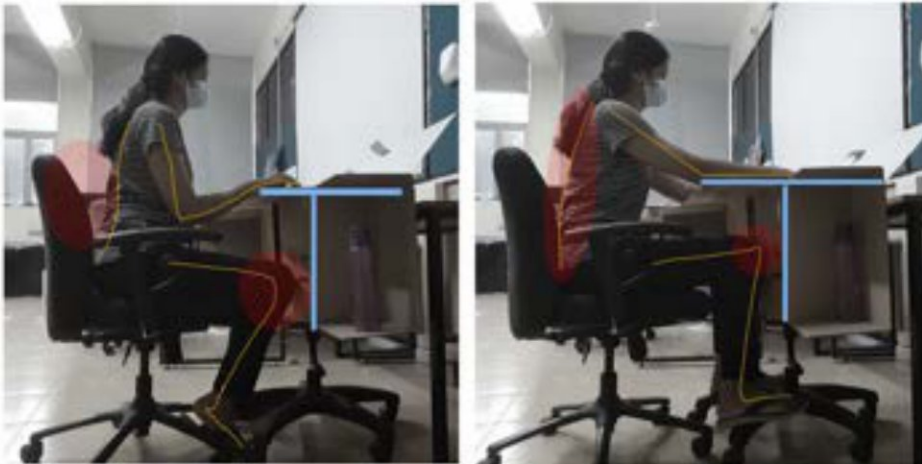


Insights from Rig testing

Dimensions of the rig constructed using corrugated sheet box are as shown below. The size of entire setup is slightly less than the actual dimension consideration because of the availability of the material.



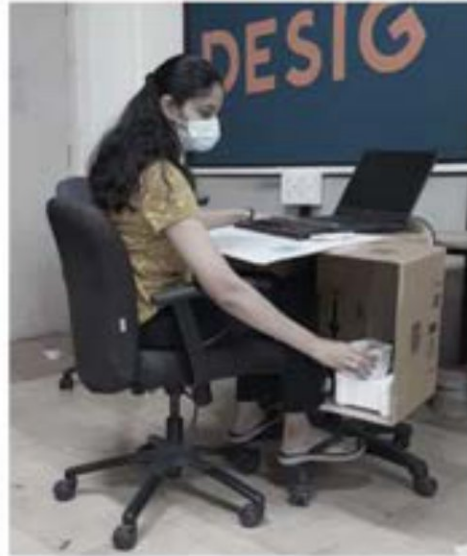
- Extended surface of table top
- Better knee and leg clearance
- Extended leg
- Good foot clearance



- Less surface area on table top
- Knee hitting front surface
- No back and arm support
- Knee hitting front surface
- Increased surface area of table top
- Better leg clearance than previous
- Still Knee touching front surface



- Acceptable margin between knee and front surface of table
- Extended surface of table top
- Better knee and leg clearance



- Object movement

Final prototype

Material consideration for prototype

8mm MR grade plywood for the structure of the furniture – since this is good in strength hence using it for the prototype to test the overall movement, load bearing capacity, leg and hand clearance

PVC pipe 25 mm diameter

POC prototyping

Procuring Material

8mm plywood

1" Screws, ½ "screws, 1" nails, 25mm, 30 mm dia Pvc pipe

Aluminium L section, Aluminium C section, sun board

Material preparation tools

Jigsaw Cutting

Sanding

Drilling

Laser cutting

Manual cutting

Assembly

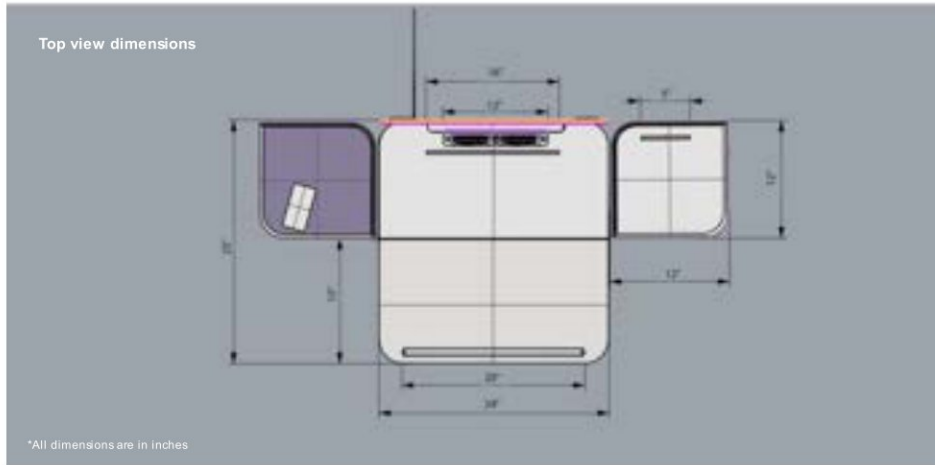
Plywood structure using nails and screws

Telescopic arrangement for height adjustment

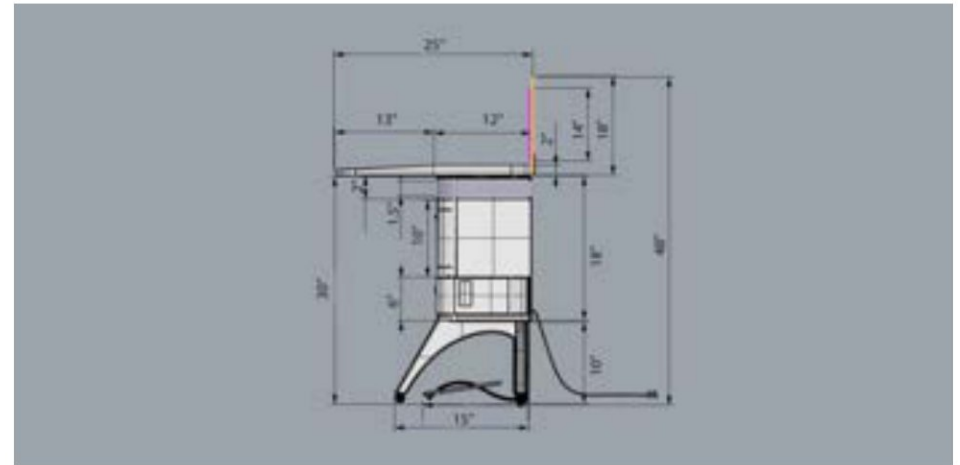
Attaching doors with hinges and screws

Dimensional drawings

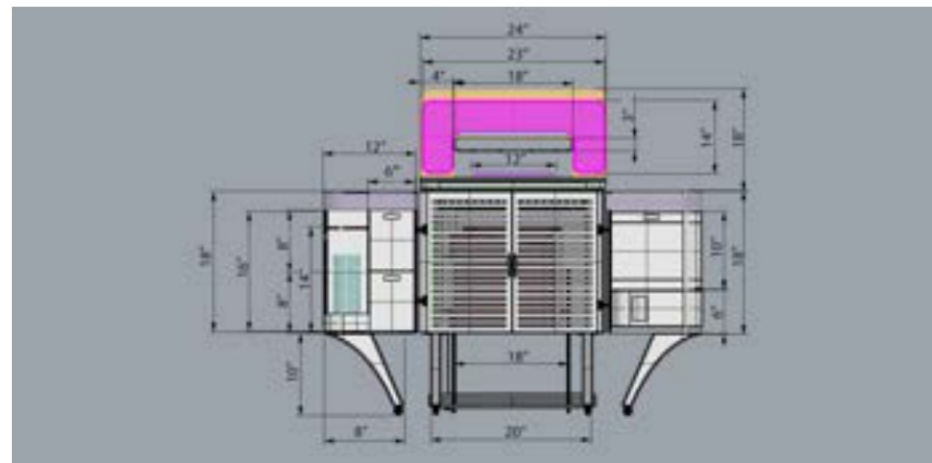
Revised dimensions



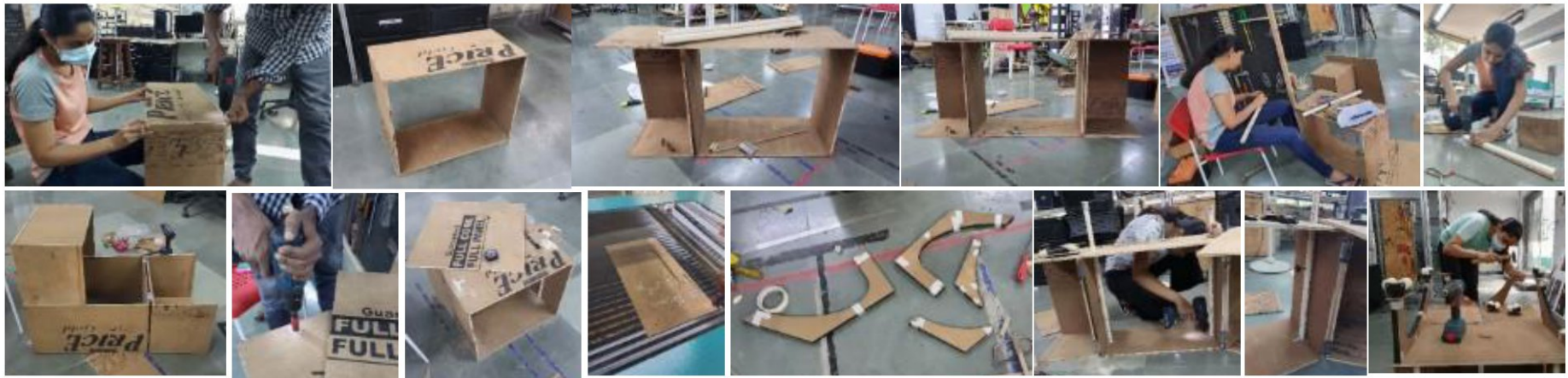
Right side view - dimensions



Front view - dimensions



Working in lab

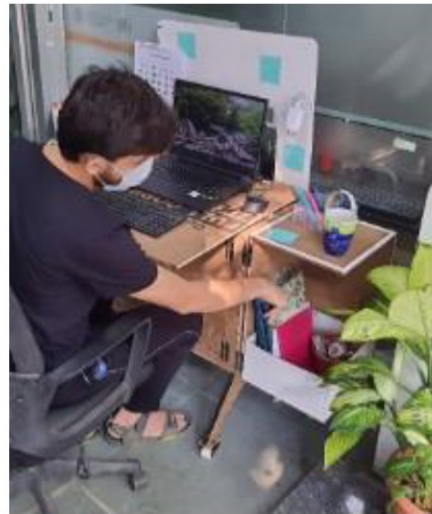
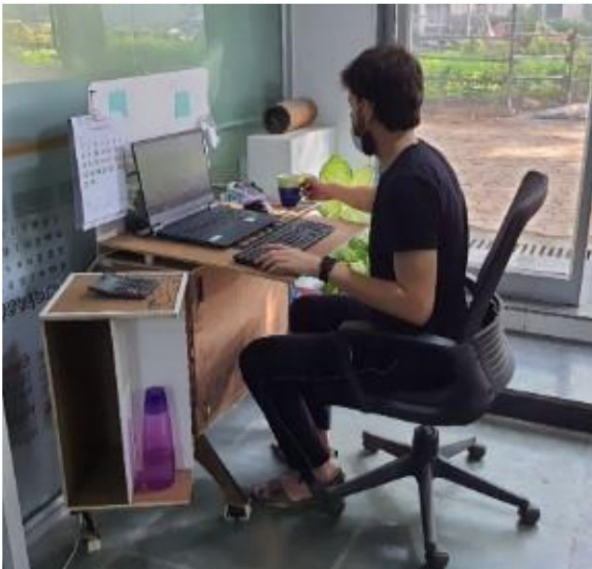
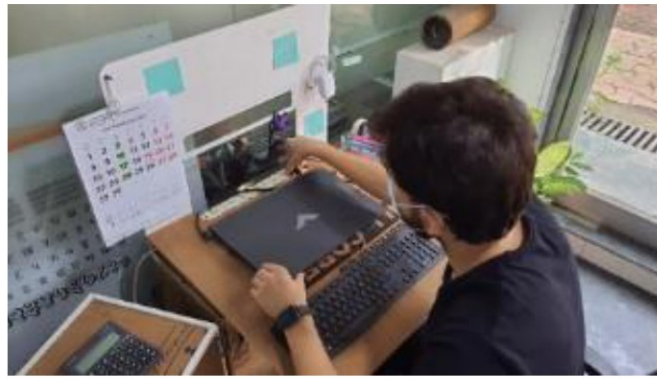
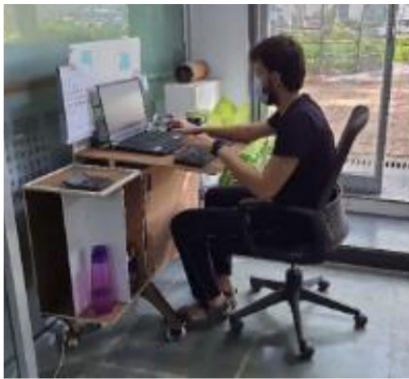






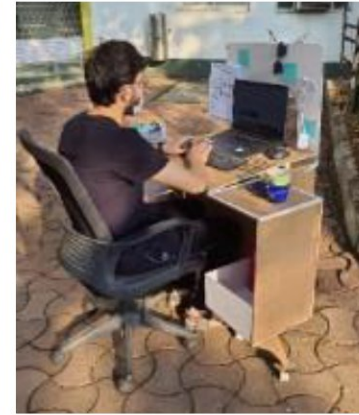
Proof of concept Prototype

User testing 1- indoor



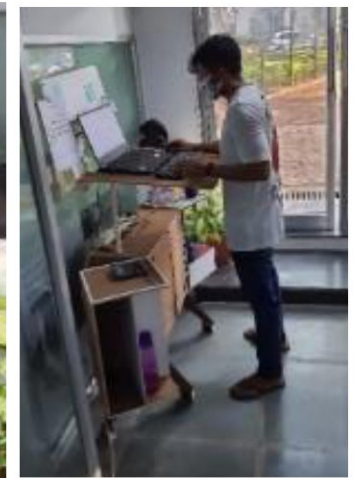
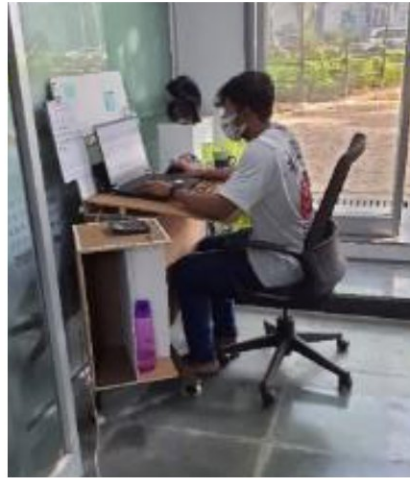
Standing posture →

User testing 1- outdoor



- **Foldable**
- **Good to carryaround**
- **W heel are well aligned**
- Standing feature is good but doesn't suit his requirement
- Feels that the overall form is complex

User testing 2



- Good Foldable feature
- Collapsible front board
- Good overall functionality and space division
- Feels relaxed to sit out and work
- Felt that leg stretching was obstructed due to CPU space
- There could be a pull table top for more leg room



6.8. FINAL DESIGN ANALYSIS

Final design is a foldable table which unfolds to become a fully functional work desk. Its height adjust feature allows user to use it in two modes which is working while standing and working while sitting. The mobile unit allows user to move around in the house if bored of working at same location for long. The design has further scope of improvement on usability part to make it a perfect fit for user to buy.

6.9. USER FEEDBACK

Based on the above user testing it was found that the concept was nice and the indoor and outdoor features helped people to move around and the change in environment helped refreshen their mind in the ongoing pandemic scenario which in a way helped their productivity. Though there is a scope of improvement in the design for better usability for further market development but overall response turned out to be appreciable.

6.10. REFERENCES

<https://www.cymax.com/Steve-Silver-Antoinette-Coffee-Table-AY150C.htm>

<https://www.bassettfurniture.com/blog/what-is-traditional-furniture.aspx>

https://www.fs.fed.us/ne/newtown_square/publications/research_papers/pdfs/s_canned/OCR/ne_rp600.pdf

https://www.researchgate.net/publication/341641258_Usage_Of_Plastic_Wastes_in_Furniture_Production_Three_Dimensional_3D_Printing_Technologies

https://www.academia.edu/38376286/USE_OF_PLASTIC_MATERIALS_IN_FURNITURE_DESIGN_pdf

<https://www.ifm.eng.cam.ac.uk/research/dstools/quality-framework/>

https://www.researchgate.net/publication/315460729_Furniture_Design_Using_Function_Analysis

https://www.flowlyf.com/flowdesk?gclid=Cj0KCQjwnJaKBhDgARIsAHmvz6cv2BW_XHQbcUHLsHsOZYkJ8RZNBFo_ltOMam_FV3fUe5NnXghsBZ78aAi7KEALw_wcB

https://www.pepperfry.com/guide-computer-table-in-exotic-teak-finish-by-a-ghobia-creations-1853886.html?type=clip&pos=34:1&cat=1916&total_result=655&variation_id=209437

https://www.flowlyf.com/flowdesk?gclid=Cj0KCQjwnJaKBhDgARIsAHmvz6cv2BW_XHQbcUHLsHsOZYkJ8RZNBFo_ltOMam_FV3fUe5NnXghsBZ78aAi7KEALw_wcB