

# HIMACHAL PRADESH JEWELLERY

Silver is considered sacred in most of the Craddi costume. Most of the traditional jewellery is silver and Meena work. Meenakari (enameling done on gold and silver) is done on the jewellery in red, blue, yellow and green colours and stones of pink red, green, mint green, aqua blue and yellow are used.

Himachal Pradesh jewellery include Elliptical anklets, Solid-lion-headed bangles, hair ornaments, peepal-leaf-shaped Jovehed ornaments

Some common motifs used on the jeweltheries are that of mother goddess, geometrical shapes and flora and fauna which includes plants, flowers, animals and birds found on the mountain.

## CHIRI :-

Worn by the Craddi Ladies on the Jovehead after marriage.

## CHANDERHAAR :-

Big sized necklace made of silver with Meena work. Worn in marriage and Jair; weight - 300-600gm.

## DHAGLU :-

Silver bangles with head of lions, tigers or elephants at the ends. Worn by both men and women of all ages.

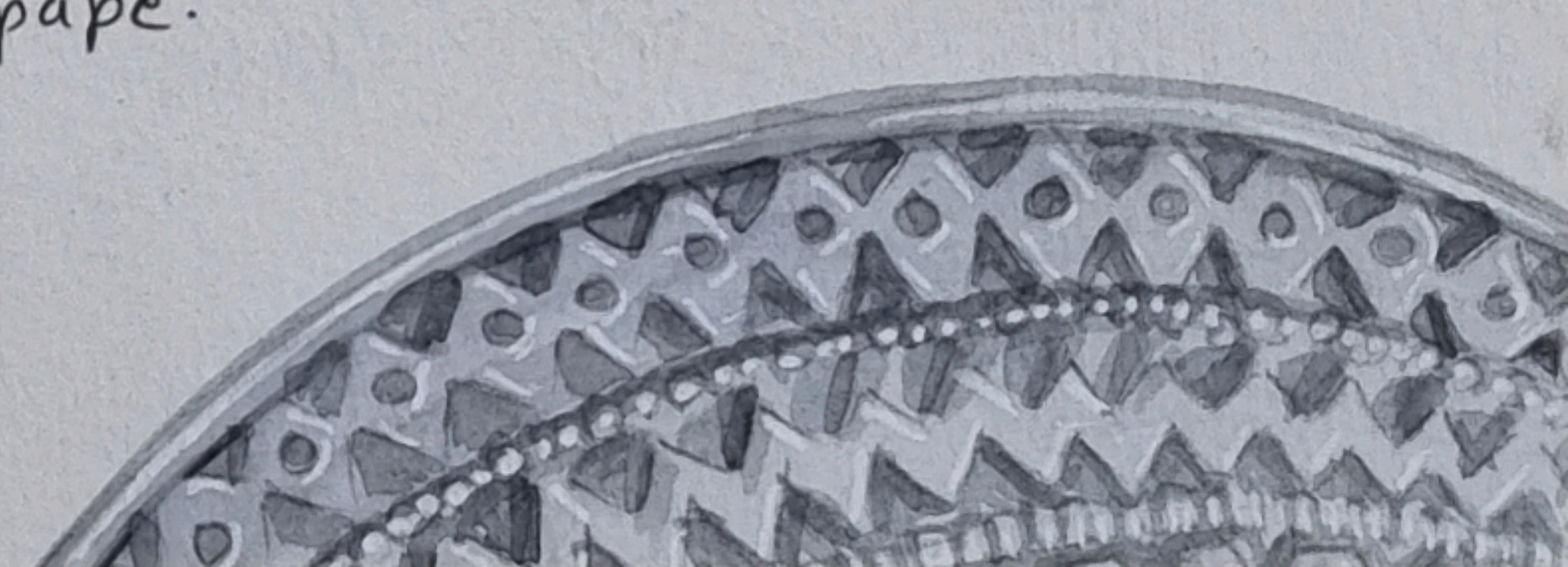
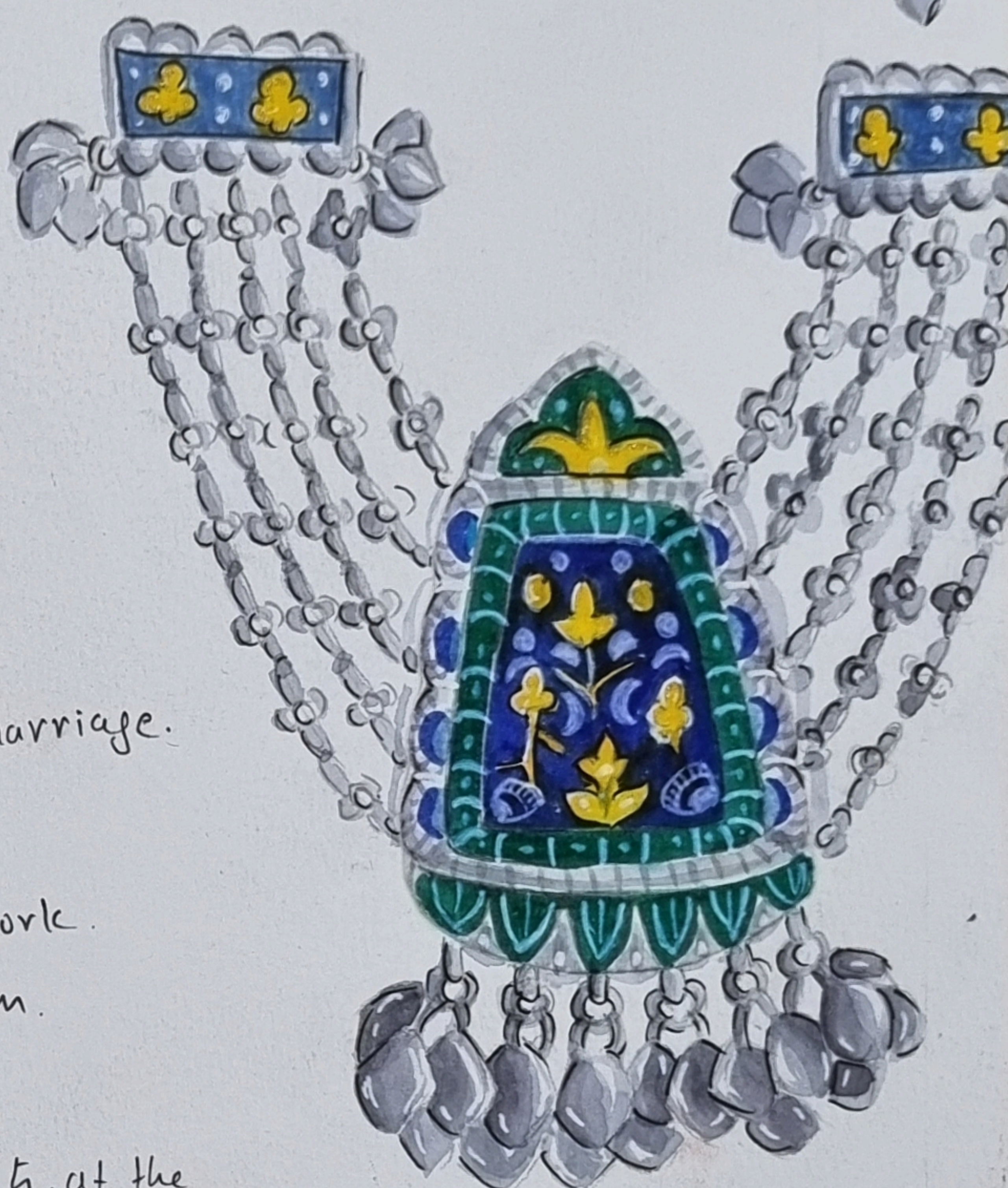
The jeweltheries are completely handmade and the proces involves designing, moulding, casting, polishing and decoration

## PHULLI :-

Big sized nose pin made of gold, weight 3gm. Round in shape with read beads.

## CHONK :-

Placed on the top/back portion of the head and is conical in shape.





①

Reference:- [www.behance.net/gallery/110633327/CRAFT-CLUSTER](http://www.behance.net/gallery/110633327/CRAFT-CLUSTER)



# TE WHAKAPAI PAI

Ornaments, as well as being decorative, also had symbolic and ceremonial significance and were connected to Maori mythology.

The use of reel and tooth elements in the earliest forms of personal adornment show the broad Pacific heritage of their creators. Discovery of distinctively New Zealand rock types such as bowenite and nephrite or pounamu (jade) led to the development of unique art forms carved with stone tools.

Materials mostly used to make the ornaments and jewelries are whale teeth and bones, animal teeth and bones and pounamu, pearls.

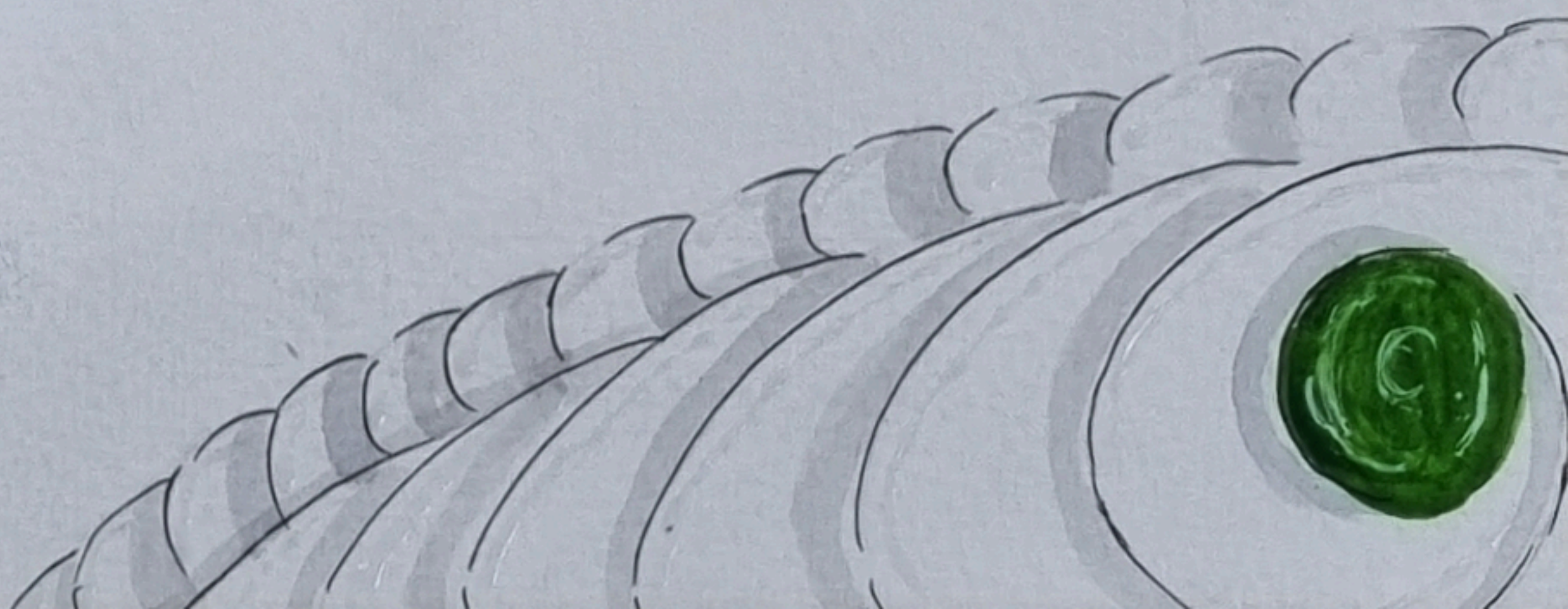
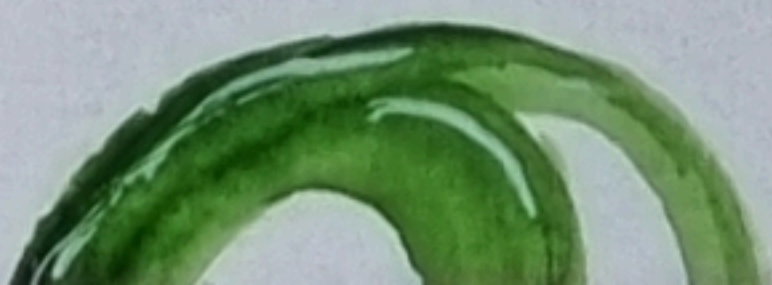
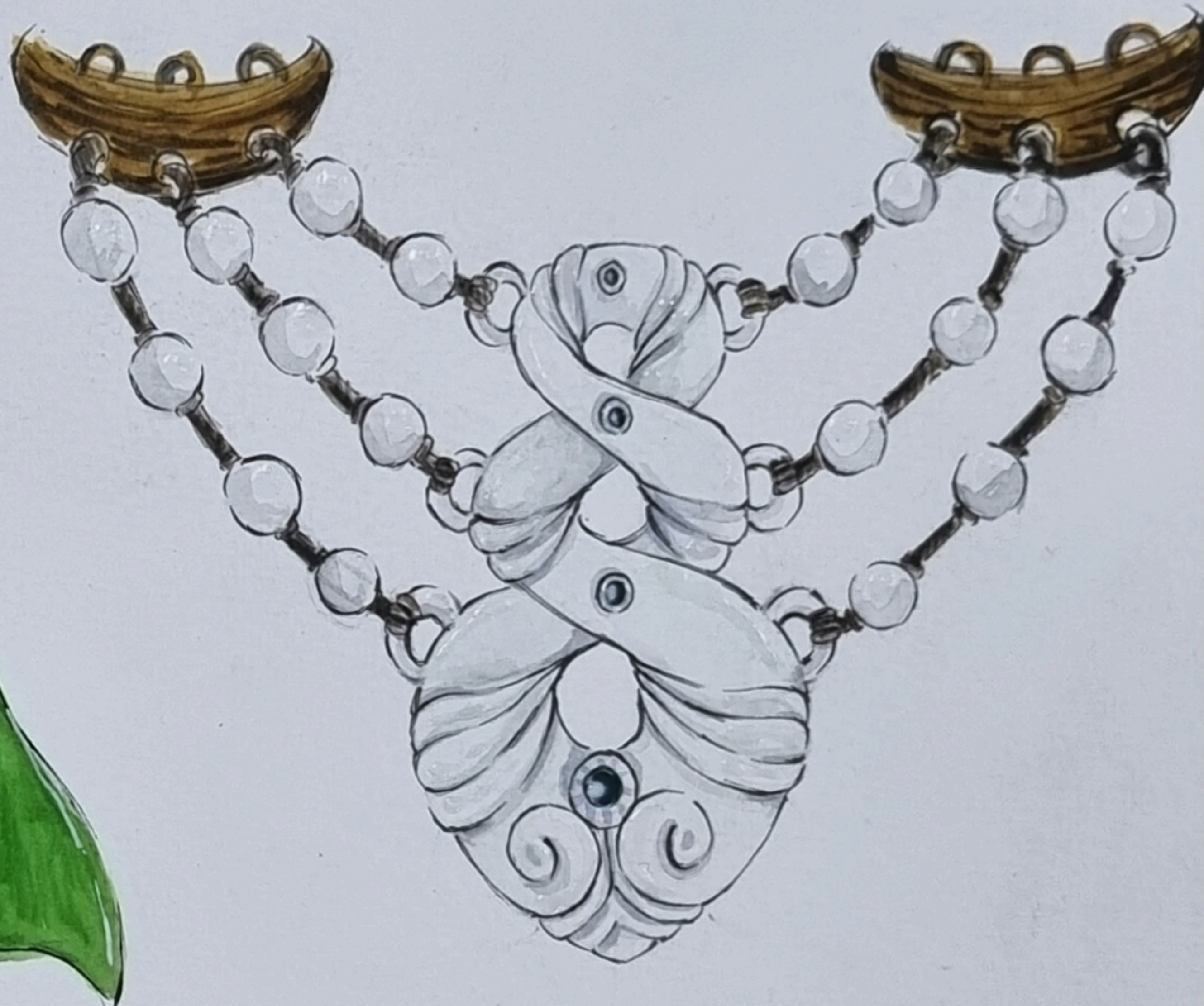
The deep respect that the Maori have for the nature is evident in their preservation of classic tribal designs. The intricate swoops and spheres communicate ancient tribal tales, dating back generations.

Some common motifs/designs they use are

- \* HEI MATAU - Fish hook
- \* HEI TIKI - Carved figure
- \* WERA - Whale tail
- \* KORU - Ground Fern
- \* MANAIA - Spirit Creature
- \* TOKI - CHISEL
- \* PIKORU - Twist

The Maorian jewelries include forehead ornaments, necklace, pendants, earrings, bracelets and bangles. These jewelries are usually very heavy because of the intricate designs and materials used. These ornaments are mostly worn by women before and after marriage to enhance their beauty.

Males wear <sup>special</sup> Some ornaments like pendants and bangles to show their status and power.





②

Reference :- [www.teara.govt.nz/en/maori-clothing-and-adornment-kakahu-maori](http://www.teara.govt.nz/en/maori-clothing-and-adornment-kakahu-maori) / Page-8

I chose the maori tribe because, unlike Himachal Pradesh which is in the mountains, the maori tribe in New Zealand is near the ocean. I wanted to see what happens when 2 very different geographical locations and cultures mix together. I tried to keep the Himalayan jewellery ~~design~~ forms with the maorian motifs and designs. I changed the material from silver to bones, teeth and jado.



HIMACHAL PRADESH (2123)

# JEWELLRY

With the advancement of science and technology over the past 100 years, the jewellery industry made many ground breaking innovations and discoveries, specially in the state of Himachal Pradesh.

Some of the Innovations are:-

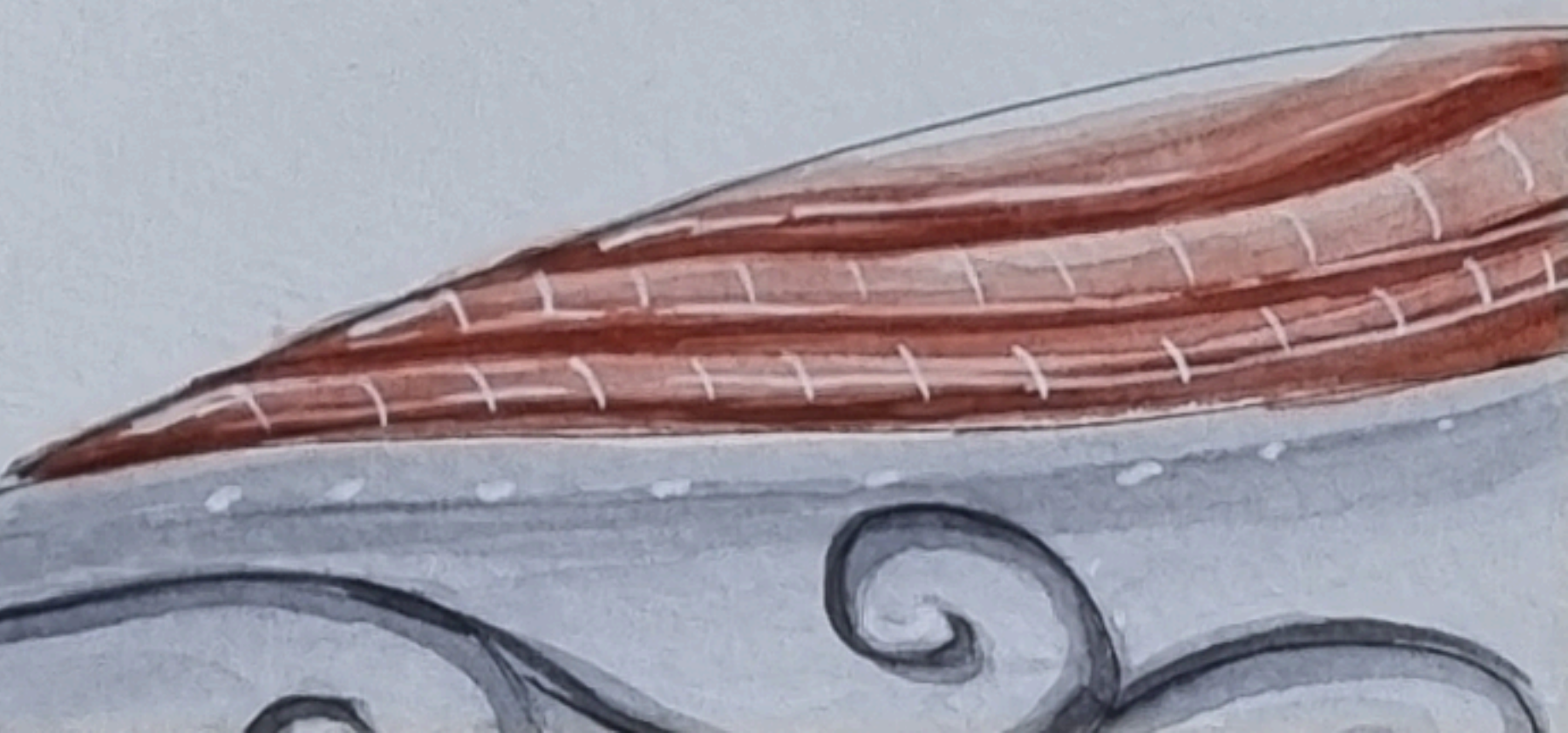
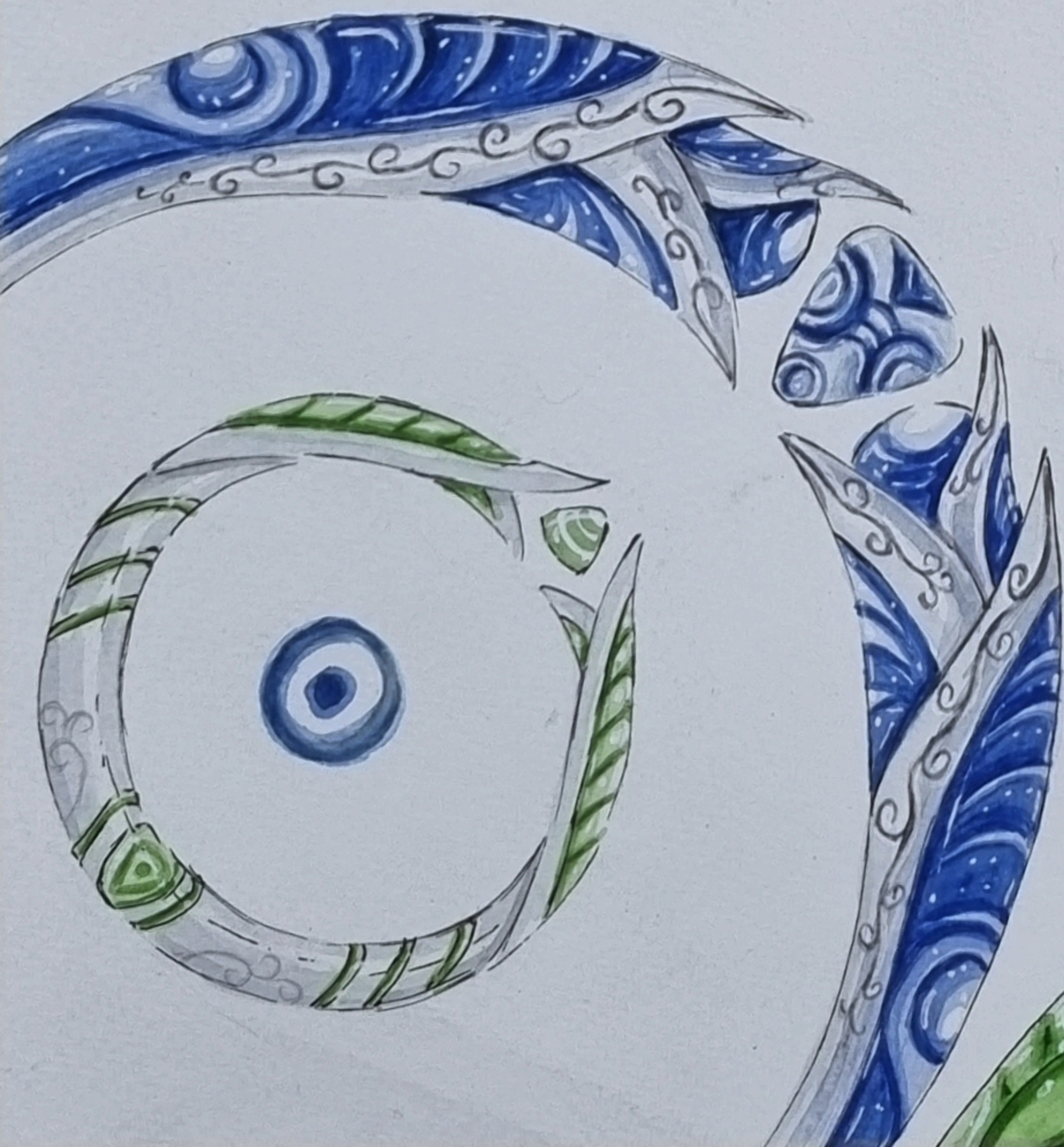
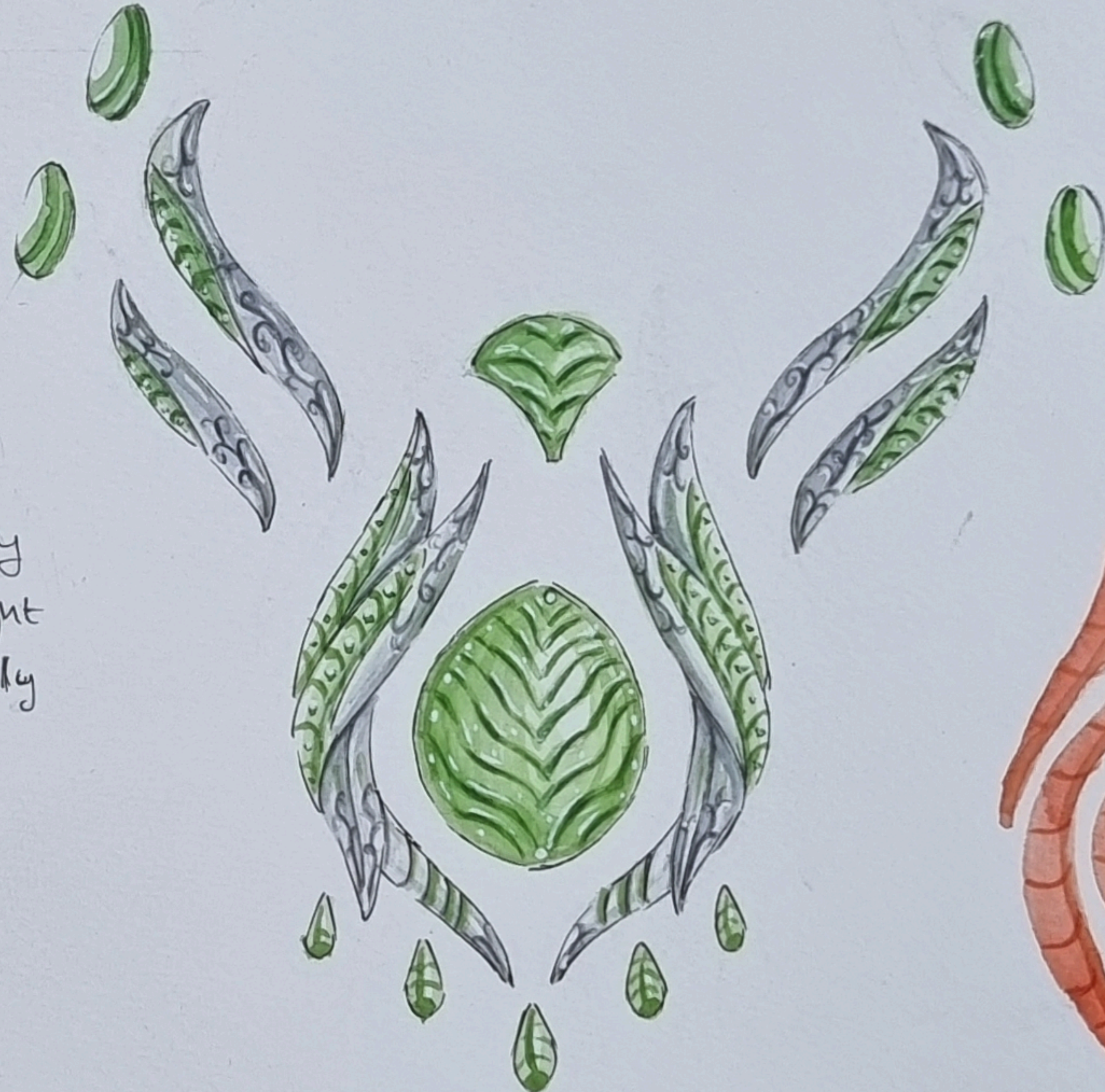
≈ Integration of nanotechnology in materials which allows them to increase or decrease in size in a small scale.

≈ Advancements in magnet technology allowed us to magnetize some materials in a certain way which allows them to levitate and stay attached with a strong attractive force at the same time.

≈ Women now don't like to wear heavy and bulky jewellries so new light weight designs are created, which are heavily inspired from si-fi and fantasies. Which include wavy and curvy shapes with intricate designs of organic and geometric patterns.

The jewellries of Himachal Pradesh still use silver primarily but the discovery of new technologies gave rise to new types of designs.

The designs still includes elements of flora and fauna, birds, animals and still use blue green and red mainly for gem stones.





3

I imagine ~~my artifact~~. The jewelry design to change drastically in the future due with the enhancement of ~~making~~ technology, the making process will also change with introduction of new materials with ad properties.

Peoples view on Jewellery ~~to~~ might completely change with time. maybe Jewellery becomes more minimalist in nature with geometric designs or ~~the~~ maybe new technologies enables us to make more complicated and elaborate designs.