

Design Resource

Budithi Brassware - Srikakulam, Andhra Pradesh

Metal Handicraft

by

Prof. Bibhudutta Baral and Srikanth Bellamkonda
NID Campus, Bengaluru

Source:

<https://www.dsource.in/resource/budithi-brassware-srikakulam-andhra-pradesh>



1. Introduction
2. Tools and Raw Materials
3. Making Process
4. Products
5. Video
6. Contact Details

Design Resource

Budithi Brassware - Srikakulam, Andhra Pradesh

Metal Handicraft

by

Prof. Bibhudutta Baral and Srikanth Bellamkonda
NID Campus, Bengaluru

Source:

<https://www.dsource.in/resource/budithi-brassware-srikakulam-andhra-pradesh/introduction>

Introduction

India is the largest brass making region in the world with thousands of establishments spread all over. Andhra Pradesh is known for the Budithi art, which is a unique and special form of metal handicrafts in India. Budithi art was originated and practiced in the Budithi village in Srikakulam district. It is famous for making beautiful metal handicrafts in both traditional and modern styles. Brass is the main alloy that is used prominently in this art. Wonderful Brassware of this place nowadays getting popularity. Earlier this art has been in the tradition of this village and now it has become the profession of locals. Due to the efforts of the state government, its art has achieved enormous popularity.

The historic and modern styles used in Budithi art attract art lovers. Handicrafts in India using this art have fictional shapes ranging from appealing traditional to stylishly modern. They usually have little necks and fantastic body shapes and come with elegant charm. In Budithi, the water container locally called “Bindelu” has unique features, construction, and material composition. The people here have this handicraft deep in their blood that every new generation is master in preparing the alloy masterpieces that are not only modern but ethnically traditional. This handicraft is there since generations are carrying it forward elegantly, giving it a more traditional yet contemporary look. Artisan Mr. Ramakrishna is well in making Bindelu. This bindelu has high demand between January to May. These are exported to Sweden and Belgium. His wife, Mrs. Suryakala is also an artist who works in Lepakshi handicrafts. She is a state award winner and an International award winner with a cash prize of one lakh. The artisans use very simple and basic tools and types of equipment for manufacturing “Bindelu”. In equipment, a hand-driven air blower is very useful to set high temperatures and heat in a furnace. They use only one machine while manufacturing Bindelu. Introduction of the new machine can be done for cutting the circular part from the sheet. As the artisans are used to practice the existing method of manufacturing Bindelu for a long time, they find it comfortable to do with hand instead of a machine, considering accuracy, quality, etc. Here, the local community is engaged in creating really fabulous Brassware, which is made using a unique technique from alloys.

The Brassware is made with geometrical shapes with curves and lines forming simple yet striking presentations that are very attractive. The traditional utensils are used mainly for cooking. And present-day artifacts reflect the art form practiced by local artisans. The artisans are highly skilled in creating the right mix of alloys. The unique shine and attraction of Brassware make it very popular. Hindus consider brass items are ideal for a spiritual purpose. Nowadays, these items are also being made for utility purposes. A bright gold appearance soft metal, brass is usually classified as a copper alloy. It is believed that drinking water stored in a brass vessel is good for health. The zinc and copper present in the brass boost immunity and protect against illness.

1. Introduction

2. Tools and Raw Materials

3. Making Process

4. Products

5. Video

6. Contact Details

Design Resource

Budithi Brassware - Srikakulam, Andhra Pradesh

Metal Handicraft

by

Prof. Bibhudutta Baral and Srikanth Bellamkonda
NID Campus, Bengaluru

Source:

<https://www.dsource.in/resource/budithi-brassware-srikakulam-andhra-pradesh/introduction>



Traditional brass Urli is kept to welcome the visitors.



The certificates indicate the outstanding work quality of Mrs. Addala Suryakala.



The certificates indicate the outstanding work quality of Mrs. Addala Suryakala.

1. Introduction
2. Tools and Raw Materials
3. Making Process
4. Products
5. Video
6. Contact Details

Design Resource

Budithi Brassware - Srikakulam, Andhra Pradesh

Metal Handicraft

by

Prof. Bibhudutta Baral and Srikanth Bellamkonda

NID Campus, Bengaluru

Source:

<https://www.dsource.in/resource/budithi-brassware-srikakulam-andhra-pradesh/introduction>



The nature and ambient of Srikakulam gives a feeling of inner peace and looks refreshing.



The artisan's house and workspace for making brass plate.



Artisan named Mr. Ramakrishna from Budithi village is working on brass materials for 30 years.



A workspace for the brass pot making with necessary tools and materials.

1. Introduction
2. Tools and Raw Materials
3. Making Process
4. Products
5. Video
6. Contact Details

Design Resource

Budithi Brassware - Srikakulam, Andhra Pradesh

Metal Handicraft

by

Prof. Bibhudutta Baral and Srikanth Bellamkonda
NID Campus, Bengaluru

Source:

<https://www.dsource.in/resource/budithi-brassware-srikakulam-andhra-pradesh/introduction>



A workspace for the brass pot making with necessary tools and materials.



Senior artisan and the founder of black acrylic solution explained the history of brass embossing in the olden ages.

1. Introduction
2. Tools and Raw Materials
3. Making Process
4. Products
5. Video
6. Contact Details



The house and temple located in the view of cultivating land are alluring.



The house and temple located in the view of cultivating land are alluring.

Design Resource

Budithi Brassware - Srikakulam, Andhra Pradesh

Metal Handicraft

by

Prof. Bibhudutta Baral and Srikanth Bellamkonda
NID Campus, Bengaluru

Source:

<https://www.dsource.in/resource/budithi-brassware-srikakulam-andhra-pradesh/introduction>

1. Introduction
2. Tools and Raw Materials
3. Making Process
4. Products
5. Video
6. Contact Details



Artisan named Mrs. Kavita from Budithi village has ten years of experience in brass embossing.



Artisan Mr. Ramakrishna has been honored by Dr. Raghuram G Rajan, Governor of RBI, for the Brassworks.

Design Resource

Budithi Brassware - Srikakulam, Andhra Pradesh

Metal Handicraft

by

Prof. Bibhudutta Baral and Srikanth Bellamkonda

NID Campus, Bengaluru

Source:

<https://www.dsource.in/resource/budithi-brassware-srikakulam-andhra-pradesh/introduction>



The ambiance of a village can be recognized by the chick and hen.



The ambiance of a village can be recognized by the chick and hen.



The dedication of the artisan for making the brass pot gives a gorgeous output.

1. Introduction

2. Tools and Raw Materials

3. Making Process

4. Products

5. Video

6. Contact Details

Design Resource

Budithi Brassware - Srikakulam, Andhra Pradesh

Metal Handicraft

by

Prof. Bibhudutta Baral and Srikanth Bellamkonda
NID Campus, Bengaluru

Source:

<https://www.dsource.in/resource/budithi-brassware-srikakulam-andhra-pradesh/tools-and-raw-materials>

Tools and Raw Materials

The following are the tools and raw materials used for Budithi Brassware :

- **Brass Sheet:** It is used as the primary raw material for the brass product.
- **KDF Mixture:** Locally called “Thankam”. KDF is a mixture of Kerosene and Flux used in the welding process. It is used to join the two pieces of the metal sheet.
- **Hammer:** Different types of hammers are used in the beating process.
- **Holder:** This tool is used to hold the object while firing.
- **Furnace:** It is used for the heating process of the product.
- **Cutting Tool:** It is used to cut the brass sheet in the required shape.
- **Turning Machine:** The object is polished by using a turning machine.
- **Lac:** It is a sticky substance used for holding the object firmly while polishing.
- **Chisel:** It is used in the polishing process and also used in an embossing process.

1. Introduction

2. Tools and Raw Materials

2a. Brass Embossing Work

2b. Brass Plate Making

2c. Brass Pot Making

3. Making Process

4. Products

5. Video

6. Contact Details

Design Resource

Budithi Brassware - Srikakulam, Andhra Pradesh

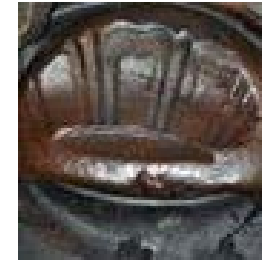
Metal Handicraft

by

Prof. Bibhudutta Baral and Srikanth Bellamkonda
NID Campus, Bengaluru



Brass Embossing Work



Brass Plate Making

Source:

<https://www.dsource.in/resource/budithi-brassware-srikakulam-andhra-pradesh/tools-and-raw-materials>



Brass Pot Making

1. Introduction

2. Tools and Raw Materials

2a. Brass Embossing Work

2b. Brass Plate Making

2c. Brass Pot Making

3. Making Process

4. Products

5. Video

6. Contact Details

Design Resource

Budithi Brassware - Srikakulam, Andhra Pradesh

Metal Handicraft

by

Prof. Bibhudutta Baral and Srikanth Bellamkonda
NID Campus, Bengaluru

Source:

<https://www.dsource.in/resource/budithi-brassware-srikakulam-andhra-pradesh/tools-and-raw-materials/brass-embossing-work>

Brass Embossing Work

Tools required for Brass Embossing Work are:



Spring divider with embossing tools is kept in a bowl.



Shellac is used to fill inside the jug to emboss as per the required design.



Cross and Straight Pein hammer with small stamping rods to emboss the design.

1. Introduction

2. Tools and Raw Materials

2a. Brass Embossing Work

2b. Brass Plate Making

2c. Brass Pot Making

3. Making Process

4. Products

5. Video

6. Contact Details

Design Resource

Budithi Brassware - Srikakulam, Andhra Pradesh

Metal Handicraft

by

Prof. Bibhudutta Baral and Srikanth Bellamkonda
NID Campus, Bengaluru

Source:

<https://www.dsource.in/resource/budithi-brassware-srikakulam-andhra-pradesh/tools-and-raw-materials/brass-plate-making>

Brass Plate Making

Tools required for Brass Plate Making are:



A brass sheet which has been cut into the shape of a circle.



Ball Pein hammer is used to shape the circular brass to a plate.

1. Introduction
2. Tools and Raw Materials
 - 2a. Brass Embossing Work
 - 2b. Brass Plate Making
 - 2c. Brass Pot Making
3. Making Process
4. Products
5. Video
6. Contact Details

Design Resource

Budithi Brassware - Srikakulam, Andhra Pradesh

Metal Handicraft

by

Prof. Bibhudutta Baral and Srikanth Bellamkonda
NID Campus, Bengaluru

Source:

<https://www.dsource.in/resource/budithi-brassware-srikakulam-andhra-pradesh/tools-and-raw-materials/brass-plate-making>

1. Introduction

2. Tools and Raw Materials

2a. Brass Embossing Work

2b. Brass Plate Making

2c. Brass Pot Making

3. Making Process

4. Products

5. Video

6. Contact Details



A wooden hammer is used to give a shape for the brass plate.



Tamarind water is used to clean the dark layer and the surface of the brass plate.



An iron rod, which is kept as a support below the plate to design.



A piece of wood which is used to smoothen the surface of the iron rod.

Design Resource

Budithi Brassware - Srikakulam, Andhra Pradesh

Metal Handicraft

by

Prof. Bibhudutta Baral and Srikanth Bellamkonda
NID Campus, Bengaluru

Source:

<https://www.dsource.in/resource/budithi-brassware-srikakulam-andhra-pradesh/tools-and-raw-materials/brass-pot-making>

Brass Pot Making

Tools required for Brass Pot Making are:



Charcoal is used to produce a vast amount of heat to burn the pot.

A small-sized mud stove used to heat the pot at a normal temperature.

1. Introduction
2. Tools and Raw Materials
 - 2a. Brass Embossing Work
 - 2b. Brass Plate Making
 - 2c. Brass Pot Making
3. Making Process
4. Products
5. Video
6. Contact Details

Design Resource

Budithi Brassware - Srikakulam, Andhra Pradesh

Metal Handicraft

by

Prof. Bibhudutta Baral and Srikanth Bellamkonda
NID Campus, Bengaluru

Source:

<https://www.dsource.in/resource/budithi-brassware-srikakulam-andhra-pradesh/tools-and-raw-materials/brass-pot-making>

1. Introduction
2. Tools and Raw Materials
 - 2a. Brass Embossing Work
 - 2b. Brass Plate Making
 - 2c. Brass Pot Making
3. Making Process
4. Products
5. Video
6. Contact Details



Big sized mud stove is used to heat the pot at a high degree temperature.



The level tool which is used to shape the pot after heating process.

Design Resource

Budithi Brassware - Srikakulam, Andhra Pradesh

Metal Handicraft

by

Prof. Bibhudutta Baral and Srikanth Bellamkonda
NID Campus, Bengaluru

Source:

<https://www.dsource.in/resource/budithi-brassware-srikakulam-andhra-pradesh/tools-and-raw-materials/brass-pot-making>

1. Introduction

2. Tools and Raw Materials

2a. Brass Embossing Work

2b. Brass Plate Making

2c. Brass Pot Making

3. Making Process

4. Products

5. Video

6. Contact Details



A power machine is used to stick the pot's bottom by using shellac to the machine and rotate in speed.



A half hatchet hammer is used to remove a dent on the pot.



Cross and Straight pein hammer used to shape the pot.

Design Resource

Budithi Brassware - Srikakulam, Andhra Pradesh

Metal Handicraft

by

Prof. Bibhudutta Baral and Srikanth Bellamkonda
NID Campus, Bengaluru

Source:

<https://www.dsource.in/resource/budithi-brassware-srikakulam-andhra-pradesh/tools-and-raw-materials/brass-pot-making>

1. Introduction
2. Tools and Raw Materials
 - 2a. Brass Embossing Work
 - 2b. Brass Plate Making
 - 2c. Brass Pot Making
3. Making Process
4. Products
5. Video
6. Contact Details



A mixture of mud and water is used to apply over the pot before heating it.



An iron holder is used to change the pot's direction while it is being heated.



The mixture of copper and zinc powder with water is used to join two parts of the pot.

Design Resource

Budithi Brassware - Srikakulam, Andhra Pradesh

Metal Handicraft

by

Prof. Bibhudutta Baral and Srikanth Bellamkonda
NID Campus, Bengaluru

Source:

<https://www.dsource.in/resource/budithi-brassware-srikakulam-andhra-pradesh/tools-and-raw-materials/brass-pot-making>

1. Introduction

2. Tools and Raw Materials

2a. Brass Embossing Work

2b. Brass Plate Making

2c. Brass Pot Making

3. Making Process

4. Products

5. Video

6. Contact Details



An air blower is used to increase the density of fire.



Shellac is used to stick the brass pot to the power machine.



The iron rods are used to rub over the attached part of the pot while heating.

Design Resource

Budithi Brassware - Srikakulam, Andhra Pradesh

Metal Handicraft

by

Prof. Bibhudutta Baral and Srikanth Bellamkonda
NID Campus, Bengaluru

Source:

<https://www.dsource.in/resource/budithi-brassware-srikakulam-andhra-pradesh/making-process>

1. Introduction
2. Tools and Raw Materials
3. Making Process
 - 3a. Brass Embossing Work
 - 3b. Brass Plate Making
 - 3c. Brass Pot Making
4. Products
5. Video
6. Contact Details

Making Process

Bindelu is made from brass metal. This brass vessel is made particularly only in Budithi. It is a two-piece vessel made by beating two different brass sheets till the required shape is achieved. The two pieces are welded and then finished from the inside. The mouth of the vessel is made by welding a casted ring to the finished sphere. It is then completed by scarping out the vessel's outer surface and polishing it, which imparts luster.

Following steps are involved in Budithi Bindelu making:

Sheet Work:

It starts working on brass sheets that come in a circular and rectangular shape. The work starts with marking, cutting, beating, and then finally welding the parts to form the product.

Marking and Cutting of Sheet:

The plan drawn on paper is cut into shape and placed on the metal sheet. The pattern is then traced onto the metal sheet. It is drawn using a marker and a divider for circular features. This is then cut into the required size with the help of a cutting tool. Once the sheet is cut, it is flattened out by beating with a hammer.

Forming:

A sheet is flat. It needs to be beaten and bent to give the required shape. Initial shapes for tubular items are attained by turning the sheet manually around steel rods of different widths. Simultaneously, the hemispherical shape for Bindelu and flower vases is achieved by beating the sheet with hammers on other stakes. To make products that are tubular in nature the sheet is first welded and made into a tube. Slits are cut at the edges of the two ends of the sheet, interlocked into each other, and then welded together using a kerosene and Flux paste called KDF. This is a mixture of brass shavings and a locally available chemical powder. It is also called as "thankam" in the local language.

Beating:

Once welded it is left to cool slightly and then placed on an anvil and beaten into the required shape. The sheet must not be cold while being beaten as it will crack and hardened. So it is heated from time to time while beating. For every slight change in the product's angle, the entire object must be beaten again to get a smooth surface.

Finishing:

The completed product after sheet work and casting doesn't have shine or smoothness. This is an important characteristic required to increase the feel and aesthetic appeal of products to increase customer viability. Thus the major processes carried out in this respect are filling, polishing, and making black and golden rings on the

Design Resource

Budithi Brassware - Srikakulam, Andhra Pradesh

Metal Handicraft

by

Prof. Bibhudutta Baral and Srikanth Bellamkonda
NID Campus, Bengaluru

Source:

<https://www.dsource.in/resource/budithi-brassware-srikakulam-andhra-pradesh/making-process>

1. Introduction
2. Tools and Raw Materials
3. Making Process
 - 3a. Brass Embossing Work
 - 3b. Brass Plate Making
 - 3c. Brass Pot Making
4. Products
5. Video
6. Contact Details

surface.

Filing:

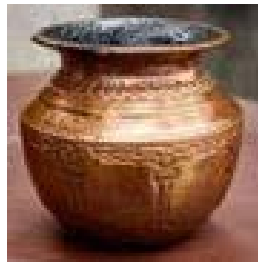
The filing process removes the remains of runners used in casting, making the edges smooth and providing fineness to shape.

Polishing:

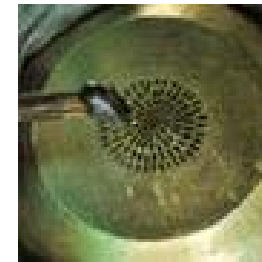
The polishing of the final product in order to give it a required finish is mostly done by normal brass polishing. Products made available in the market after turning the products on a lath kind of set up.

Embossing:

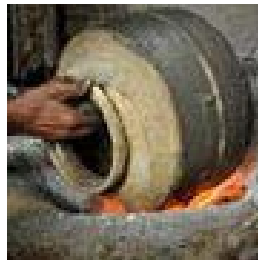
Embossing is usually done for Kalasha. It is also known as 'PIMBARTI' work. The embossing is done on the object with the help of a chisel and hammer.



Brass Embossing Work



Brass Plate Making



Brass Pot Making

Design Resource

Budithi Brassware - Srikakulam, Andhra Pradesh

Metal Handicraft

by

Prof. Bibhudutta Baral and Srikanth Bellamkonda
NID Campus, Bengaluru

Source:

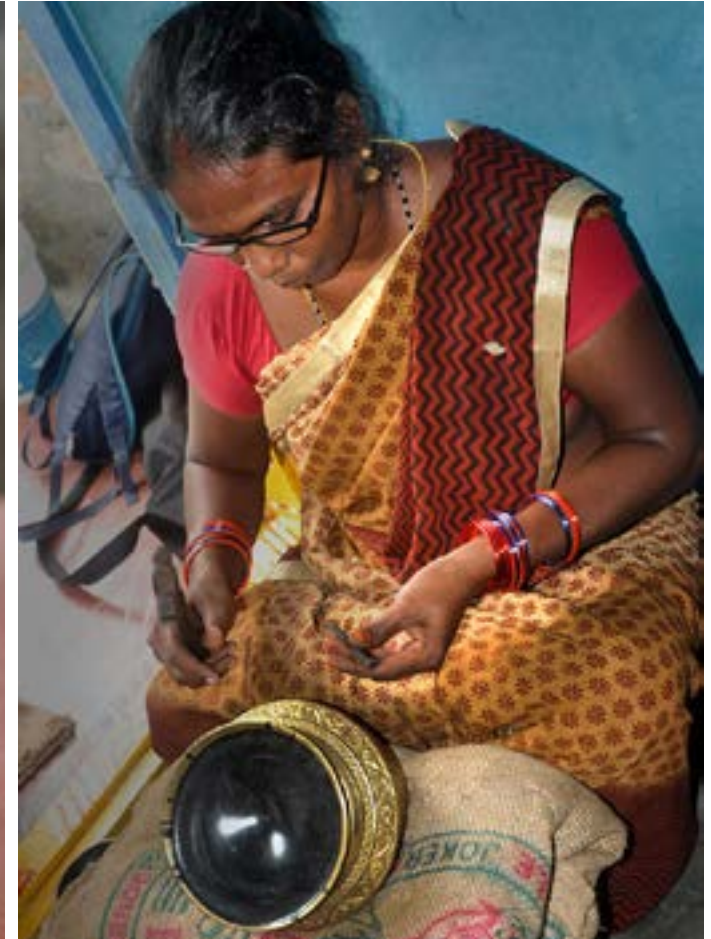
<https://www.dsource.in/resource/budithi-brassware-srikakulam-andhra-pradesh/making-process/brass-embossing-work>

Brass Embossing Work

Process of Brass Embossing Work:



A jug filled with shellac is kept ready for embossing.



Artisan is checking for the measurement and shape for the required design to be embossed.

1. Introduction
2. Tools and Raw Materials
3. Making Process
 - 3a. Brass Embossing Work
 - 3b. Brass Plate Making
 - 3c. Brass Pot Making
4. Products
5. Video
6. Contact Details

Design Resource

Budithi Brassware - Srikakulam, Andhra Pradesh

Metal Handicraft

by

Prof. Bibhudutta Baral and Srikanth Bellamkonda
NID Campus, Bengaluru

Source:

<https://www.dsource.in/resource/budithi-brassware-srikakulam-andhra-pradesh/making-process/brass-embossing-work>

1. Introduction

2. Tools and Raw Materials

3. Making Process

3a. Brass Embossing Work

3b. Brass Plate Making

3c. Brass Pot Making

4. Products

5. Video

6. Contact Details



Details are being added to the jug.



Artisan is highlighting the jug with traditional design.



The neck part of the jug is being embossed by the artisan.

Design Resource

Budithi Brassware - Srikakulam, Andhra Pradesh

Metal Handicraft

by

Prof. Bibhudutta Baral and Srikanth Bellamkonda
NID Campus, Bengaluru

Source:

<https://www.dsource.in/resource/budithi-brassware-srikakulam-andhra-pradesh/making-process/brass-embossing-work>



The jug is completed with embossing by traditional design.



Artisan have polished the jug and kept for exhibiting.

1. Introduction
2. Tools and Raw Materials
3. Making Process
 - 3a. Brass Embossing Work
 - 3b. Brass Plate Making
 - 3c. Brass Pot Making
4. Products
5. Video
6. Contact Details



Artisan is embossing the bigger products made up of brass.



The details are being added to the base of the plate of life size statue.

Design Resource

Budithi Brassware - Srikakulam, Andhra Pradesh

Metal Handicraft

by

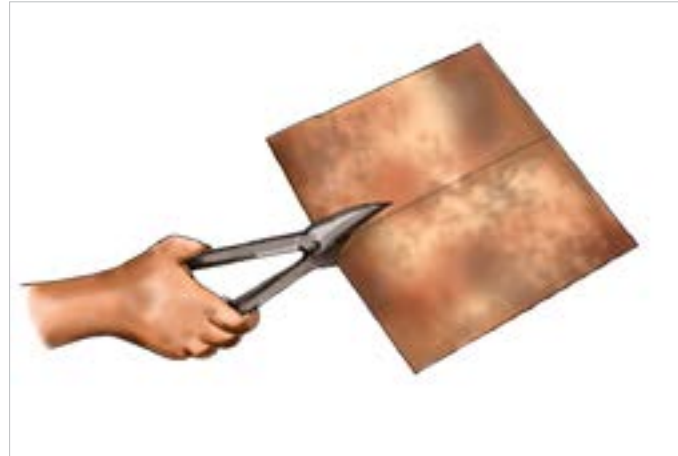
Prof. Bibhudutta Baral and Srikanth Bellamkonda
NID Campus, Bengaluru

Source:

<https://www.dsource.in/resource/budithi-brassware-srikakulam-andhra-pradesh/making-process/brass-plate-making>

Brass Plate Making

Process of Brass Plate Making:



Artisan is trimming the brass sheet into a circular shape.



The artisan is hammering the trimmed brass sheet using a wooden hammer.



The dark layer from the brass plate is scrubbed out by using tamarind water.



The brass plates are kept in order after they are beaten into shape.

1. Introduction

2. Tools and Raw Materials

3. Making Process

3a. Brass Embossing Work

3b. Brass Plate Making

3c. Brass Pot Making

4. Products

5. Video

6. Contact Details

Design Resource

Budithi Brassware - Srikakulam, Andhra Pradesh

Metal Handicraft

by

Prof. Bibhudutta Baral and Srikanth Bellamkonda

NID Campus, Bengaluru

Source:

<https://www.dsource.in/resource/budithi-brassware-srikakulam-andhra-pradesh/making-process/brass-plate-making>

1. Introduction
2. Tools and Raw Materials
3. Making Process
 - 3a. Brass Embossing Work
 - 3b. Brass Plate Making
 - 3c. Brass Pot Making
4. Products
5. Video
6. Contact Details



The artisan is cleaning the plate before stabilizing the plate.



Artisan ready to hammer the Brass plate.

Hammering the plate comes out with a traditional design.

Design Resource

Budithi Brassware - Srikakulam, Andhra Pradesh

Metal Handicraft

by

Prof. Bibhudutta Baral and Srikanth Bellamkonda
NID Campus, Bengaluru

Source:

<https://www.dsource.in/resource/budithi-brassware-srikakulam-andhra-pradesh/making-process/brass-plate-making>

1. Introduction
2. Tools and Raw Materials
3. Making Process
 - 3a. Brass Embossing Work
 - 3b. Brass Plate Making
 - 3c. Brass Pot Making
4. Products
5. Video
6. Contact Details



Artisan has completed designing half portion of the plate.



The front and backside of the plate are completely hammered and the plate is alluring.



Artisan is almost to the end of completing the design.

Design Resource

Budithi Brassware - Srikakulam, Andhra Pradesh

Metal Handicraft

by

Prof. Bibhudutta Baral and Srikanth Bellamkonda
NID Campus, Bengaluru

Source:

<https://www.dsource.in/resource/budithi-brassware-srikakulam-andhra-pradesh/making-process/brass-pot-making>

Brass Pot Making

Process of Brass Pot Making:



The basic process of brass pot making before casting, the head to the upper body.



The head is fixed with the upper body and it is being heated to get attached strongly.

1. Introduction
2. Tools and Raw Materials
3. Making Process
 - 3a. Brass Embossing Work
 - 3b. Brass Plate Making
 - 3c. Brass Pot Making
4. Products
5. Video
6. Contact Details

Design Resource

Budithi Brassware - Srikakulam, Andhra Pradesh

Metal Handicraft

by

Prof. Bibhudutta Baral and Srikanth Bellamkonda
NID Campus, Bengaluru

Source:

<https://www.dsource.in/resource/budithi-brassware-srikakulam-andhra-pradesh/making-process/brass-pot-making>

1. Introduction
2. Tools and Raw Materials
3. Making Process
 - 3a. Brass Embossing Work
 - 3b. Brass Plate Making
 - 3c. Brass Pot Making
4. Products
5. Video
6. Contact Details



The upper body of the pot is kept for cooling.



The artisan is hammering the upper body of the brass pot to get a circular shape.

Design Resource

Budithi Brassware - Srikakulam, Andhra Pradesh

Metal Handicraft

by

Prof. Bibhudutta Baral and Srikanth Bellamkonda

NID Campus, Bengaluru

Source:

<https://www.dsource.in/resource/budithi-brassware-srikakulam-andhra-pradesh/making-process/brass-pot-making>

1. Introduction

2. Tools and Raw Materials

3. Making Process

3a. Brass Embossing Work

3b. Brass Plate Making

3c. Brass Pot Making

4. Products

5. Video

6. Contact Details



A lower body part of the brass pot is ready to get fixed.



Copper and zinc powder are being heated at an average degree temperature.



Artisan is aligning the upper and lower body part of the pot together.

Design Resource

Budithi Brassware - Srikakulam, Andhra Pradesh

Metal Handicraft

by

Prof. Bibhudutta Baral and Srikanth Bellamkonda
NID Campus, Bengaluru

Source:

<https://www.dsource.in/resource/budithi-brassware-srikakulam-andhra-pradesh/making-process/brass-pot-making>

1. Introduction
2. Tools and Raw Materials
3. Making Process
 - 3a. Brass Embossing Work
 - 3b. Brass Plate Making
 - 3c. Brass Pot Making
4. Products
5. Video
6. Contact Details



The copper and zinc powder is being mixed with the water to make it into the adhesive paste.



The adhesive paste is being applied to the joint of the upper and lower body part of the pot.



After applying the adhesive, the pot is kept to dry.

Design Resource

Budithi Brassware - Srikakulam, Andhra Pradesh

Metal Handicraft

by

Prof. Bibhudutta Baral and Srikanth Bellamkonda

NID Campus, Bengaluru

Source:

<https://www.dsource.in/resource/budithi-brassware-srikakulam-andhra-pradesh/making-process/brass-pot-making>

1. Introduction
2. Tools and Raw Materials
3. Making Process
 - 3a. Brass Embossing Work
 - 3b. Brass Plate Making
 - 3c. Brass Pot Making
4. Products
5. Video
6. Contact Details



The mixed mud with water is being applied to the pot.

The wet mud applied over the pot is kept for heating.

Design Resource

Budithi Brassware - Srikakulam, Andhra Pradesh

Metal Handicraft

by

Prof. Bibhudutta Baral and Srikanth Bellamkonda
NID Campus, Bengaluru

Source:

<https://www.dsource.in/resource/budithi-brassware-srikakulam-andhra-pradesh/making-process/brass-pot-making>

1. Introduction
2. Tools and Raw Materials
3. Making Process
 - 3a. Brass Embossing Work
 - 3b. Brass Plate Making
 - 3c. Brass Pot Making
4. Products
5. Video
6. Contact Details



By using the air blower, an artisan is increasing the fire's temperature to heat the pot.



While heating the pot, the artisan rubs the joint of the brass pot's upper and lower body with an iron rod.



After the heating process, the brass pot is kept for cooling.



The applied mud on the heated brass pot is cleaned by pouring water.

Design Resource

Budithi Brassware - Srikakulam, Andhra Pradesh

Metal Handicraft

by

Prof. Bibhudutta Baral and Srikanth Bellamkonda
NID Campus, Bengaluru

Source:

<https://www.dsource.in/resource/budithi-brassware-srikakulam-andhra-pradesh/making-process/brass-pot-making>

1. Introduction
2. Tools and Raw Materials
3. Making Process
 - 3a. Brass Embossing Work
 - 3b. Brass Plate Making
 - 3c. Brass Pot Making
4. Products
5. Video
6. Contact Details



The artisan is rubbing over the pot to clean the mud.



The artisan is checking for dents on the brass pot.

Design Resource

Budithi Brassware - Srikakulam, Andhra Pradesh

Metal Handicraft

by

Prof. Bibhudutta Baral and Srikanth Bellamkonda
NID Campus, Bengaluru

Source:

<https://www.dsource.in/resource/budithi-brassware-srikakulam-andhra-pradesh/making-process/brass-pot-making>

1. Introduction
2. Tools and Raw Materials
3. Making Process
 - 3a. Brass Embossing Work
 - 3b. Brass Plate Making
 - 3c. Brass Pot Making
4. Products
5. Video
6. Contact Details



Artisan is hammering the pot with the help of level to straighten it.



The brass pot is completed with the heating and straightening process.



The pot is being fixed to the power machine with the help of shellac.



Artisan is sharpening the iron rod and checking the sharpness.

Design Resource

Budithi Brassware - Srikakulam, Andhra Pradesh

Metal Handicraft

by

Prof. Bibhudutta Baral and Srikanth Bellamkonda
NID Campus, Bengaluru

Source:

<https://www.dsource.in/resource/budithi-brassware-srikakulam-andhra-pradesh/making-process/brass-pot-making>

1. Introduction
2. Tools and Raw Materials
3. Making Process
 - 3a. Brass Embossing Work
 - 3b. Brass Plate Making
 - 3c. Brass Pot Making
4. Products
5. Video
6. Contact Details



The artisan is placing the sharp iron rod closer to the brass pot and turns on the machine.



As the machine rotates in high friction, the brass pot is rotating at hyper speed.

Design Resource

Budithi Brassware - Srikakulam, Andhra Pradesh

Metal Handicraft

by

Prof. Bibhudutta Baral and Srikanth Bellamkonda
NID Campus, Bengaluru

Source:

<https://www.dsource.in/resource/budithi-brassware-srikakulam-andhra-pradesh/making-process/brass-pot-making>

1. Introduction

2. Tools and Raw Materials

3. Making Process

3a. Brass Embossing Work

3b. Brass Plate Making

3c. Brass Pot Making

4. Products

5. Video

6. Contact Details



The artisan is scraping out the waste layer over the brass pot.



The completed brass pot is exquisitely admirable in the hand of an artisan.



Artisan is scraping the inner layer through the head of the brass pot.



Once the scrapping is completed, an artisan is removing the brass pot from the power machine.

Design Resource

Budithi Brassware - Srikakulam, Andhra Pradesh

Metal Handicraft

by

Prof. Bibhudutta Baral and Srikanth Bellamkonda
NID Campus, Bengaluru

Source:

<https://www.dsource.in/resource/budithi-brassware-srikakulam-andhra-pradesh/products>

1. Introduction
2. Tools and Raw Materials
3. Making Process
4. Products
5. Video
6. Contact Details

Products

The products are mostly Bindelu (Water container), flower vases, utensils, etc. Brass is also used nowadays for making statues of gods and goddesses, household items, cooking utensils, and decorative items. The price range of the product depends on the quality and design. The cost of the Budithi Bindelu is around INR 1600. The cost of the utensils is INR 500- 1000. Plain Kalasha is sold for INR 500, and embossed Kalasha is sold for INR 2500.



A traditional plate with embossing of Lord Ganesh is being displayed.



A pot in an oval shape, different from the rest of the other pots, looks attractive.



A cow standing on the royal chair is being designed entirely with brass.



A swing that has been designed to keep God or Goddess on it.

Design Resource

Budithi Brassware - Srikakulam, Andhra Pradesh

Metal Handicraft

by

Prof. Bibhudutta Baral and Srikanth Bellamkonda
NID Campus, Bengaluru

Source:

<https://www.dsource.in/resource/budithi-brassware-srikakulam-andhra-pradesh/products>

1. Introduction
2. Tools and Raw Materials
3. Making Process
4. Products
5. Video
6. Contact Details



The face of Lord Shiva shows in detail with the regular features made with brass.



A fruit basket is made up of brass and with the traditional flowers on it.



A brass flower vase that is embossed with a traditional pattern and painted with black acrylic colour.

Design Resource

Budithi Brassware - Srikakulam, Andhra Pradesh

Metal Handicraft

by

Prof. Bibhudutta Baral and Srikanth Bellamkonda
NID Campus, Bengaluru

Source:

<https://www.dsource.in/resource/budithi-brassware-srikakulam-andhra-pradesh/products>

1. Introduction
2. Tools and Raw Materials
3. Making Process
4. Products
5. Video
6. Contact Details



Traditional kumkum stand in two different patterns is being exhibited.

A chakra is being designed as a tower and can be seen from the top view; layers have differentiated it from the side view.

Design Resource

Budithi Brassware - Srikakulam, Andhra Pradesh

Metal Handicraft

by

Prof. Bibhudutta Baral and Srikanth Bellamkonda
NID Campus, Bengaluru

Source:

<https://www.dsource.in/resource/budithi-brassware-srikakulam-andhra-pradesh/products>



A mug that was designed according to the Indian ancient time.

A cube-shaped pot has coloured with orange acrylic.

1. Introduction
2. Tools and Raw Materials
3. Making Process
4. Products
5. Video
6. Contact Details

Design Resource

Budithi Brassware - Srikakulam, Andhra Pradesh

Metal Handicraft

by

Prof. Bibhudutta Baral and Srikanth Bellamkonda
NID Campus, Bengaluru

Source:

<https://www.dsource.in/resource/budithi-brassware-srikakulam-andhra-pradesh/products>

1. Introduction
2. Tools and Raw Materials
3. Making Process
4. Products
5. Video
6. Contact Details



A temple bell looks shiny and glossy that made with brass.



A traditional pot is being packed and kept ready for sale.

Design Resource

Budithi Brassware - Srikakulam, Andhra Pradesh

Metal Handicraft

by

Prof. Bibhudutta Baral and Srikanth Bellamkonda
NID Campus, Bengaluru

Source:

<https://www.dsource.in/resource/budithi-brassware-srikakulam-andhra-pradesh/video>

Video



Budithi Brassware - Srikakulam, Andhra Pradesh

1. Introduction
2. Tools and Raw Materials
3. Making Process
4. Products
5. Video
6. Contact Details

Design Resource

Budithi Brassware - Srikakulam, Andhra Pradesh

Metal Handicraft

by

Prof. Bibhudutta Baral and Srikanth Bellamkonda
NID Campus, Bengaluru

Source:

<https://www.dsource.in/resource/budithi-brassware-srikakulam-andhra-pradesh/contact-details>

Contact Details

This documentation was done by Prof. Bibhudutta Baral and Srikanth Bellamkonda at [NID, Bengaluru](#).

You can get in touch with Prof. Bibhudutta Baral at [bibhudutta\[at\]nid.edu](mailto:bibhudutta[at]nid.edu)

You can write to the following address regarding suggestions and clarifications:

Key Contacts:

Mr. Rama Krishna, Artist
Sri Nandishwar Vasthu Kalanilayam
Srikakulam
Andhra Pradesh
Mobile: 09440207818

Helpdesk Details:

Co-ordinator
Project e-kalpa
R & D Campus
National Institute of Design
#12 HMT Link Road, Off Tumkur Road
Bengaluru 560 022
India

Phone: +91 80 2357 9054
Fax: +91 80 23373086
Email: [dsource.in\[at\]gmail.com](mailto:dsource.in[at]gmail.com)

1. Introduction
2. Tools and Raw Materials
3. Making Process
4. Products
5. Video
6. Contact Details