

Design Resource

Copper Enamel Arts and Crafts - Alibaug, Maharashtra

An ancient technique of copper embellishment by Sanmati Hosure IDC, IIT Bombay

Source:

<https://www.dsource.in/resource/copper-enamel-arts-and-crafts-alibaug-maharashtra>



1. Introduction
2. Artist
3. Tools and Raw Materials
4. Making Process
5. Products
6. Video
7. Contact Details

Design Resource

Copper Enamel Arts and Crafts - Alibaug, Maharashtra

An ancient technique of copper embellishment by

Sanmati Hosure
IDC, IIT Bombay

Source:

<https://www.dsource.in/resource/copper-enamel-arts-and-crafts-alibaug-maharashtra/introduction>

1. Introduction
2. Artist
3. Tools and Raw Materials
4. Making Process
5. Products
6. Video
7. Contact Details

Introduction

Copper enamelling is a centuries-old craft. It has journeyed many generations. The traditional old age art has roots in Varanasi first planted by Persian enamellists as early as the 17th century. It is a process in which powdered glass is fused to a metal surface by using high heat. Usually, metals like gold, silver and copper are used for enamelling. The metal articles or jewellery are embellished with colourful enamelling. The powdered glass can be applied either wet or dry to a surface. The colourful glass powder is laid onto the copper surface according to the pattern or design and it is put on a high heat to melt the powdered glass. This process results in a coat which is formed on the copper surface. The end result not only lends its vibrant colours to the copper surface but also prevents it from oxidizing. This makes articles more attractive and useful too.

It is the hard work of artisans that makes the art come up to the mark. There is a cluster called 'Copper Enamel Arts and Crafts' where a few artisans are working. The cluster is highly professional in manufacturing beautiful copper enamel artefacts. It is based in a small village known as Bhaimala near Alibag, Raigad district of Maharashtra. Mr Sanjay Patil is the owner of this unit. He, his son Vikrant and his daughter Rutuja are also helping him in this art. Around ten artisans are working in shifts here.

The 'Copper Enamel Arts and Crafts' cluster not only produces artifacts but also conducts training sessions and workshops for art lovers. To create awareness about the copper enamel art they promote themselves through various social media platforms. Mr Sanjay has 40 years of experience in copper enamelling art and is recognised by the Government of India. The 12ft by 11ft installation of the Indian Map was brought to life through the copper enamel art which is displayed in the Sardar Vallabhai Patel Museum inside the Statue of Unity Memorial Entrance, Gujarat.



A bowl.



A pen holder.

Design Resource

Copper Enamel Arts and Crafts - Alibaug, Maharashtra

An ancient technique of copper embellishment by Sanmati Hosure IDC, IIT Bombay

Source:

<https://www.dsource.in/resource/copper-enamel-arts-and-crafts-alibaug-maharashtra/introduction>

1. Introduction
2. Artist
3. Tools and Raw Materials
4. Making Process
5. Products
6. Video
7. Contact Details



A wall plate depicting bird.



Copper enamelling elephant frame.

Design Resource

Copper Enamel Arts and Crafts - Alibaug, Maharashtra

An ancient technique of copper embellishment by

Sanmati Hosure
IDC, IIT Bombay

Source:

<https://www.dsource.in/resource/copper-enamel-arts-and-crafts-alibaug-maharashtra/introduction>

1. Introduction
2. Artist
3. Tools and Raw Materials
4. Making Process
5. Products
6. Video
7. Contact Details



Copper enamelling Ganesh frame.



Copper enamelling sun frame.

Design Resource

Copper Enamel Arts and Crafts - Alibaug, Maharashtra

An ancient technique of copper embellishment by

Sanmati Hosure
IDC, IIT Bombay

Source:

<https://www.dsource.in/resource/copper-enamel-arts-and-crafts-alibaug-maharashtra/introduction>

1. Introduction
2. Artist
3. Tools and Raw Materials
4. Making Process
5. Products
6. Video
7. Contact Details



A wall hanging of Ganesha.



Products at display.

Design Resource

Copper Enamel Arts and Crafts - Alibaug, Maharashtra

An ancient technique of copper embellishment by Sanmati Hosure IDC, IIT Bombay

Source:

<https://www.dsource.in/resource/copper-enamel-arts-and-crafts-alibaug-maharashtra/introduction>

1. Introduction
2. Artist
3. Tools and Raw Materials
4. Making Process
5. Products
6. Video
7. Contact Details



Pen Holder.



Copper Enamelling Workshop.

Design Resource

Copper Enamel Arts and Crafts - Alibaug, Maharashtra

An ancient technique of copper embellishment by

Sanmati Hosure
IDC, IIT Bombay

Source:

<https://www.dsource.in/resource/copper-enamel-arts-and-crafts-alibaug-maharashtra/artist>

1. Introduction
2. Artist
3. Tools and Raw Materials
4. Making Process
5. Products
6. Video
7. Contact Details

Artist

The 'Copper Enamel Arts and Crafts' cluster's workshop is located in Bhaimala, which is in the Raigad district close to Alibaug, Maharashtra. Master craftsman Mr Sanjay Patil has been running his copper enamel workshop since 1986. Mr Sanjay learnt the copper enamelling art from Mr Babu Mhatre and worked with him for 11 years. In the late 50s, Mr Babu happened to travel to Spain and learnt the craft. Then he decided to explore different methods to work on this craft in India. During 1959-1960, he worked with Bhulabhai Memorial Institute on Warden Road in Mumbai. Slowly he became popular for copper enamel art and started doing a lot of commission work. He started a small set-up in Alibaug. He trained the locals in this craft for making lifestyle accessory products. Some locals became experts and branched out on their own to work independently.

Mr Sanjay Patil is one of the master craftsmen who runs a workshop, 'Copper Enamel Arts and Crafts'. His family members and ten other craftsmen are trained under him. His son Vikrant graduated from the Science stream. Since childhood, he has been watching his father's expert work and decided to carry forward his father's legacy. He has been very active and striving for this art's popularity. The cluster is full of different types of products.



Inside view of workshop.



Inside view of workshop.

Design Resource

Copper Enamel Arts and Crafts - Alibaug, Maharashtra

An ancient technique of copper embellishment by
Sanmati Hosure
IDC, IIT Bombay

Source:

<https://www.dsource.in/resource/copper-enamel-arts-and-crafts-alibaug-maharashtra/artist>

1. Introduction
2. Artist
3. Tools and Raw Materials
4. Making Process
5. Products
6. Video
7. Contact Details



Artist Milind busy with his work.

Design Resource

Copper Enamel Arts and Crafts - Alibaug, Maharashtra

An ancient technique of copper embellishment by Sanmati Hosure IDC, IIT Bombay

Source:

<https://www.dsource.in/resource/copper-enamel-arts-and-crafts-alibaug-maharashtra/artist>

1. Introduction
2. Artist
3. Tools and Raw Materials
4. Making Process
5. Products
6. Video
7. Contact Details



Mr Sanjay's son Vikrant, himself, daughter Rutuja with artisans Milind and Sahil.



Team with artists.



Mr Vikrant Patil.



Workshop.

Design Resource

Copper Enamel Arts and Crafts - Alibaug, Maharashtra

An ancient technique of copper embellishment by

Sanmati Hosure
IDC, IIT Bombay

Source:

<https://www.dsource.in/resource/copper-enamel-arts-and-crafts-alibaug-maharashtra/tools-and-raw-materials>

Tools and Raw Materials

The tools and raw materials that are used for making copper enamelling art are as follows:

- **Copper Sheet:** It is the base material on which enamel art is done.
- **Flux Powder:** Clear flux powder is used to put on copper surface which acts as a base coat for enamelling.
- **Glass Stone:** It is ground to make glass colour powder.
- **Glass Stone Powder:** It is used for colourful enamelling.
- **Gas Stove:** It is used to heat the coloured copper surface.
- **Paintbrushes:** Different types of paintbrushes are used for painting.
- **Stencil:** It is used as a design reference for cutting copper wire.
- **Copper Sheet Cutting Machine:** It is used to cut the copper sheet into the required shape.

1. Introduction

2. Artist

3. Tools and Raw Materials

4. Making Process

5. Products

6. Video

7. Contact Details



A clear coat is used for finishing look.



Brush, cotton cloth and colours.

Design Resource

Copper Enamel Arts and Crafts - Alibaug, Maharashtra

An ancient technique of copper embellishment

by

Sanmati Hosure

IDC, IIT Bombay

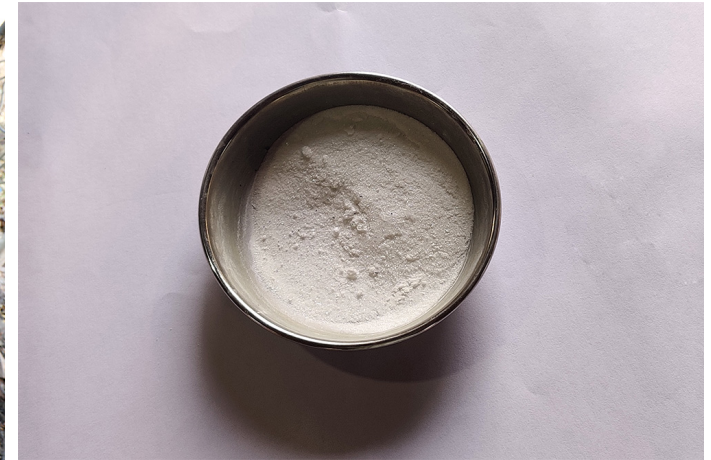
Source:

<https://www.dsource.in/resource/copper-enamel-arts-and-crafts-alibaug-maharashtra/tools-and-raw-materials>

1. Introduction
2. Artist
3. Tools and Raw Materials
4. Making Process
5. Products
6. Video
7. Contact Details



Buffing machine.



Clear flux powder used as a base coat.



Compass and other cutting tools.



Copper Sheet.

Design Resource

Copper Enamel Arts and Crafts - Alibaug, Maharashtra

An ancient technique of copper embellishment

by

Sanmati Hosure

IDC, IIT Bombay

Source:

<https://www.dsource.in/resource/copper-enamel-arts-and-crafts-alibaug-maharashtra/tools-and-raw-materials>

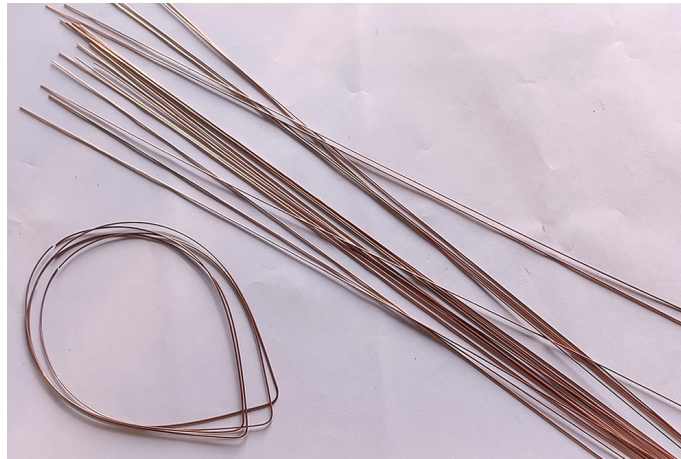
1. Introduction
2. Artist
3. Tools and Raw Materials
4. Making Process
5. Products
6. Video
7. Contact Details



Copper sheet cutting machine.



Copper stencils.



Copper wire.



Copper wires cut into different shapes.

Design Resource

Copper Enamel Arts and Crafts - Alibaug, Maharashtra

An ancient technique of copper embellishment by

Sanmati Hosure
IDC, IIT Bombay

Source:

<https://www.dsource.in/resource/copper-enamel-arts-and-crafts-alibaug-maharashtra/tools-and-raw-materials>

1. Introduction
2. Artist
3. Tools and Raw Materials
4. Making Process
5. Products
6. Video
7. Contact Details



Different types of paintbrushes are used for painting.



Drill machine.



Enamel powder colours.



Everything kept ready on the table for painting.

Design Resource

Copper Enamel Arts and Crafts - Alibaug, Maharashtra

An ancient technique of copper embellishment by

Sanmati Hosure
IDC, IIT Bombay

Source:

<https://www.dsource.in/resource/copper-enamel-arts-and-crafts-alibaug-maharashtra/tools-and-raw-materials>

1. Introduction
2. Artist
3. Tools and Raw Materials
4. Making Process
5. Products
6. Video
7. Contact Details



Gas stove.



Kandap machine or Pounding machine is used to make colour powder from glass stone.



Hammer and other shaping tools.



Smoothing machine.

Design Resource

Copper Enamel Arts and Crafts - Alibaug, Maharashtra

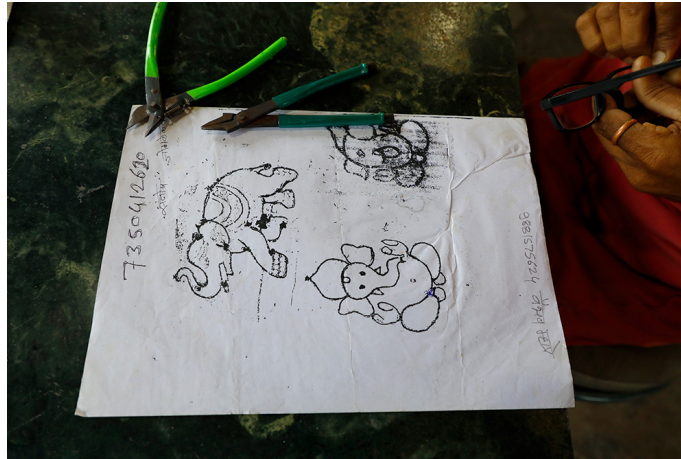
An ancient technique of copper embellishment by

Sanmati Hosure
IDC, IIT Bombay

Source:

<https://www.dsource.in/resource/copper-enamel-arts-and-crafts-alibaug-maharashtra/tools-and-raw-materials>

1. Introduction
2. Artist
3. Tools and Raw Materials
4. Making Process
5. Products
6. Video
7. Contact Details



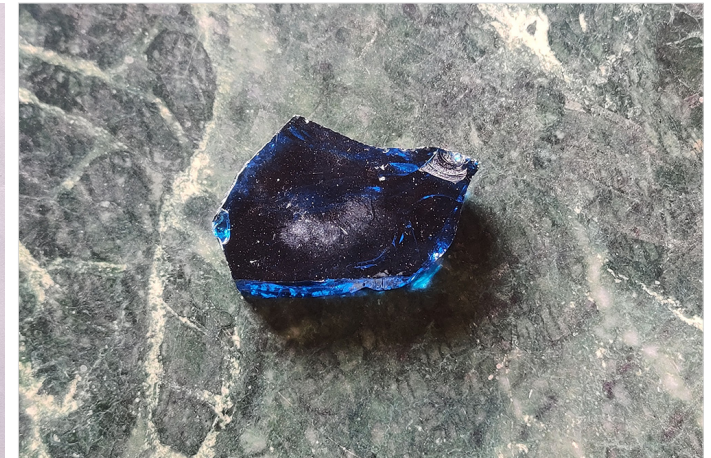
Stencil is used as a reference for cutting copper wire.



Sulfuric acid solution.



The glass stone and its powder form.



The glass stone is grinded to make colour powder.

Design Resource

Copper Enamel Arts and Crafts - Alibaug, Maharashtra

An ancient technique of copper embellishment by

Sanmati Hosure
IDC, IIT Bombay

Source:

<https://www.dsource.in/resource/copper-enamel-arts-and-crafts-alibaug-maharashtra/making-process>

1. Introduction
2. Artist
3. Tools and Raw Materials
4. Making Process
5. Products
6. Video
7. Contact Details

Making Process

The copper enamelling process starts with the cutting of copper sheets. The required design is printed and pasted on the copper sheet. A flat copper sheet is cut using a copper cutting machine. Then it is given a proper curve or shape by beating with a hammer. In this process, a round-shaped sheet is used. Then a clear flux powder is put into the copper sheet. This powder works as a base coat. A thin copper wire is used to make design patterns. The wire is bent and cut using scissors. The cut pieces of copper wires are put together on the flux-applied copper surface as per the design. The sides are cleaned using a brush. Now this plate is put on a gas stove for heating. The process of heating helps flux powder to melt and fix the copper wire pieces on the surface. Here the melted flux powder acts as a base coat. The heated plate is allowed to cool for some time. After cooling it is dipped into the sulphuric acid solution. The art piece is cleaned using a buffing machine. Now comes the colouring part.

The colour glass powder is made by crushing colour glass stones using a Kandap machine. The glass powder is mixed with water to make it wet. This wet glass powder is now put on the design by using a brush. Bright and eye-catching colours are used for painting. Once the painting is done excess water on the surface is tipped using a cotton cloth. The cotton cloth soaks an excess amount of water from the design. The art piece is heated once again. Now heating will help to enhance and fix the colours. After cooling, the art piece is dipped into the sulphuric acid solution. This process removes impurities that occur from the heating process. It is buffed one more time. And here is the final product.



Copper sheet.



Copper sheet is cut as per requirement.

Design Resource

Copper Enamel Arts and Crafts - Alibaug, Maharashtra

An ancient technique of copper embellishment by

Sanmati Hosure
IDC, IIT Bombay

Source:

<https://www.dsource.in/resource/copper-enamel-arts-and-crafts-alibaug-maharashtra/making-process>

1. Introduction
2. Artist
3. Tools and Raw Materials
4. Making Process
5. Products
6. Video
7. Contact Details



Cut copper shapes are used as a base.



Properly shaped copper plate.



Clear flux powder is put on the surface as a base coat.



Artist applying clear flux powder.

Design Resource

Copper Enamel Arts and Crafts - Alibaug, Maharashtra

An ancient technique of copper embellishment by

Sanmati Hosure
IDC, IIT Bombay

Source:

<https://www.dsource.in/resource/copper-enamel-arts-and-crafts-alibaug-maharashtra/making-process>

1. Introduction
2. Artist
3. Tools and Raw Materials
4. Making Process
5. Products
6. Video
7. Contact Details



All set for further processing.



Artist removing excess powder from sides.



Copper wire is shaped as per design and cut using cutter.



Copper wires cut into different shapes.

Design Resource

Copper Enamel Arts and Crafts - Alibaug, Maharashtra

An ancient technique of copper embellishment by

Sanmati Hosure
IDC, IIT Bombay

Source:

<https://www.dsource.in/resource/copper-enamel-arts-and-crafts-alibaug-maharashtra/making-process>

1. Introduction
2. Artist
3. Tools and Raw Materials
4. Making Process
5. Products
6. Video
7. Contact Details



Artist putting copper wire shape according to the design.



He carefully put all copper wire pieces.



A complete Ganesh image.



The plate is put on fire for fixing the copper wires.

Design Resource

Copper Enamel Arts and Crafts - Alibaug, Maharashtra

An ancient technique of copper embellishment by Sanmati Hosure IDC, IIT Bombay

Source:

<https://www.dsource.in/resource/copper-enamel-arts-and-crafts-alibaug-maharashtra/making-process>

1. Introduction
2. Artist
3. Tools and Raw Materials
4. Making Process
5. Products
6. Video
7. Contact Details



The heated plate is kept for cooling.



A tray and sulfuric acid solution.



The plate is dipped into sulfuric solution.



The plate is kept in the solution for a while.

Design Resource

Copper Enamel Arts and Crafts - Alibaug, Maharashtra

An ancient technique of copper embellishment by

Sanmati Hosure
IDC, IIT Bombay

Source:

<https://www.dsource.in/resource/copper-enamel-arts-and-crafts-alibaug-maharashtra/making-process>

1. Introduction
2. Artist
3. Tools and Raw Materials
4. Making Process
5. Products
6. Video
7. Contact Details



Set-up for the next process.



Artist applying colour.



Rutuja busy in her painting job.



White colour is applying to the leg.

Design Resource

Copper Enamel Arts and Crafts - Alibaug, Maharashtra

An ancient technique of copper embellishment by Sanmati Hosure IDC, IIT Bombay

Source:

<https://www.dsource.in/resource/copper-enamel-arts-and-crafts-alibaug-maharashtra/making-process>

1. Introduction
2. Artist
3. Tools and Raw Materials
4. Making Process
5. Products
6. Video
7. Contact Details



Excess water from colour is tipped using cotton cloth.



A single layer of navy blue colour is applied.



A sky blue colour is applied along with navy blue colour.



Painting process done.

Design Resource

Copper Enamel Arts and Crafts - Alibaug, Maharashtra

An ancient technique of copper embellishment by
Sanmati Hosure
IDC, IIT Bombay

Source:

<https://www.dsource.in/resource/copper-enamel-arts-and-crafts-alibaug-maharashtra/making-process>

1. Introduction
2. Artist
3. Tools and Raw Materials
4. Making Process
5. Products
6. Video
7. Contact Details



Rutuja showing her finished painting.



Once again the plate is heated on gas stove to fix the colours.



One can see how the colour is changing while heating.



It is kept to cool for some time.

Design Resource

Copper Enamel Arts and Crafts - Alibaug, Maharashtra

An ancient technique of copper embellishment by Sanmati Hosure IDC, IIT Bombay

Source:

<https://www.dsource.in/resource/copper-enamel-arts-and-crafts-alibaug-maharashtra/making-process>

1. Introduction
2. Artist
3. Tools and Raw Materials
4. Making Process
5. Products
6. Video
7. Contact Details



One more time the plate is dipped in sulfuric solution.



Sahil buffing the plate to clean it.



A completed plate.



Copper enamel painting of Ganesha.

Design Resource

Copper Enamel Arts and Crafts - Alibaug, Maharashtra

An ancient technique of copper embellishment by

Sanmati Hosure
IDC, IIT Bombay

Source:

<https://www.dsource.in/resource/copper-enamel-arts-and-crafts-alibaug-maharashtra/products>

Products

India is rich in traditional handicrafts. Many artisans carry their art legacy for generations. Every state has its own handicrafts in India. Copper enamelling art is a unique one. Simple copper products are decorated with attractive colours that in the end enhance the look of the final product. It took countless efforts for the artisan to complete one artefact.

Handicrafts require a lot of patience and hard work. Due to a lack of awareness of creative arts among people handicraft industry is not very popular. Therefore artisans are not getting proper attention to their creativity. Every artisan wishes to come under the limelight for his art. Junior artist Vikrant appeals to all viewers to come forward and admire the handicraft industry.

'Copper Enamel Arts and Crafts' started in the year of 1986 as a small cluster. Now it has become a well-known centre for interior designers and art lovers. Mr Sanjay produces traditional as well as contemporary artefacts. He also takes orders from design firms. Tableware, wall decors, wall hangings, key holders, flower vases, pen stands, tea coasters and many other products are produced by this workshop.

1. Introduction
2. Artist
3. Tools and Raw Materials
4. Making Process
5. Products
6. Video
7. Contact Details



A pen holder.



A wall hanging.

Design Resource

Copper Enamel Arts and Crafts - Alibaug, Maharashtra

An ancient technique of copper embellishment by Sanmati Hosure IDC, IIT Bombay

Source:

<https://www.dsource.in/resource/copper-enamel-arts-and-crafts-alibaug-maharashtra/products>

1. Introduction
2. Artist
3. Tools and Raw Materials
4. Making Process
5. Products
6. Video
7. Contact Details



A wall hanging.



A plate with Lord Ganesha.

Design Resource

Copper Enamel Arts and Crafts - Alibaug, Maharashtra

An ancient technique of copper embellishment by Sanmati Hosure IDC, IIT Bombay

Source:

<https://www.dsource.in/resource/copper-enamel-arts-and-crafts-alibaug-maharashtra/products>

1. Introduction
2. Artist
3. Tools and Raw Materials
4. Making Process
5. Products
6. Video
7. Contact Details



Beautiful copper enamel plate.



Bowl and plate.



Bowl and plate.



Brush holder.

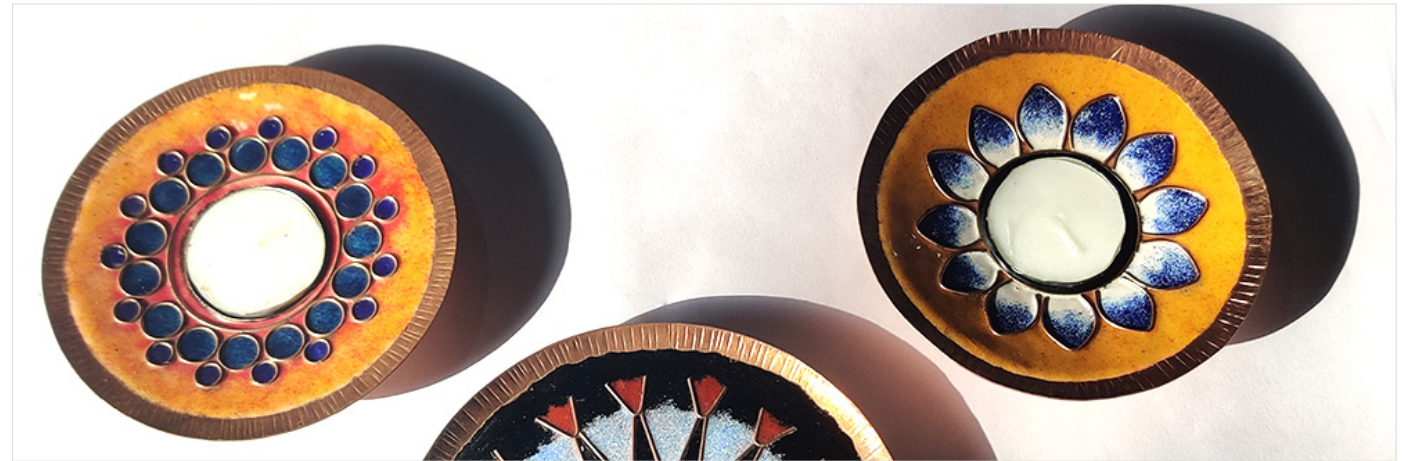
Design Resource

Copper Enamel Arts and Crafts - Alibaug, Maharashtra

An ancient technique of copper embellishment by Sanmati Hosure IDC, IIT Bombay

Source:

<https://www.dsource.in/resource/copper-enamel-arts-and-crafts-alibaug-maharashtra/products>



Candle holders.



Copper enamel bird.



Copper enamel plates.

1. Introduction
2. Artist
3. Tools and Raw Materials
4. Making Process
5. Products
6. Video
7. Contact Details

Design Resource

Copper Enamel Arts and Crafts - Alibaug, Maharashtra

An ancient technique of copper embellishment by Sanmati Hosure IDC, IIT Bombay

Source:

<https://www.dsource.in/resource/copper-enamel-arts-and-crafts-alibaug-maharashtra/products>

1. Introduction
2. Artist
3. Tools and Raw Materials
4. Making Process
5. Products
6. Video
7. Contact Details



Copper enamel plates.



Copper enamel plates.



Copper enamel plate with flower motif.



Different types of plates and bowls.

Design Resource

Copper Enamel Arts and Crafts - Alibaug, Maharashtra

An ancient technique of copper embellishment by Sanmati Hosure IDC, IIT Bombay

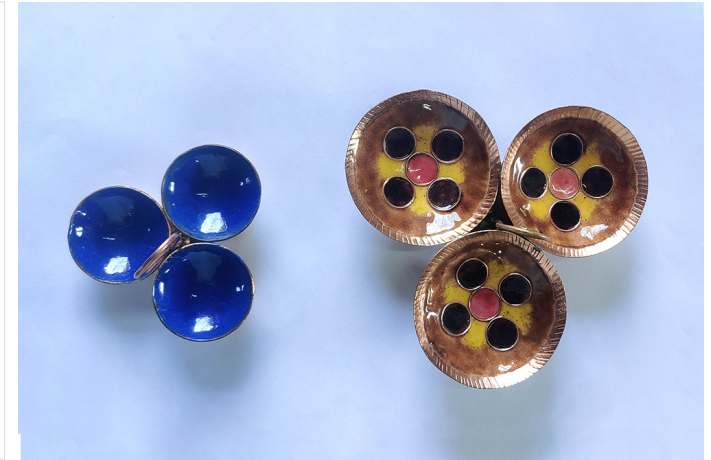
Source:

<https://www.dsource.in/resource/copper-enamel-arts-and-crafts-alibaug-maharashtra/products>

1. Introduction
2. Artist
3. Tools and Raw Materials
4. Making Process
5. Products
6. Video
7. Contact Details



Ganesh wall hanging.



Haldi-kumkum holder.



Tea Light Holder.



Fruit Bowl and Astray.

Design Resource

Copper Enamel Arts and Crafts - Alibaug, Maharashtra

An ancient technique of copper embellishment by Sanmati Hosure IDC, IIT Bombay

Source:

<https://www.dsource.in/resource/copper-enamel-arts-and-crafts-alibaug-maharashtra/products>

1. Introduction
2. Artist
3. Tools and Raw Materials
4. Making Process
5. Products
6. Video
7. Contact Details



Incense stick holder.



Key holders.



Tray.



Candle holder and diyas.

Design Resource

Copper Enamel Arts and Crafts - Alibaug, Maharashtra

An ancient technique of copper embellishment by Sanmati Hosure IDC, IIT Bombay

Source:

<https://www.dsource.in/resource/copper-enamel-arts-and-crafts-alibaug-maharashtra/products>

1. Introduction
2. Artist
3. Tools and Raw Materials
4. Making Process
5. Products
6. Video
7. Contact Details



Copper enamel plates.



Flower vase.



Key holders.

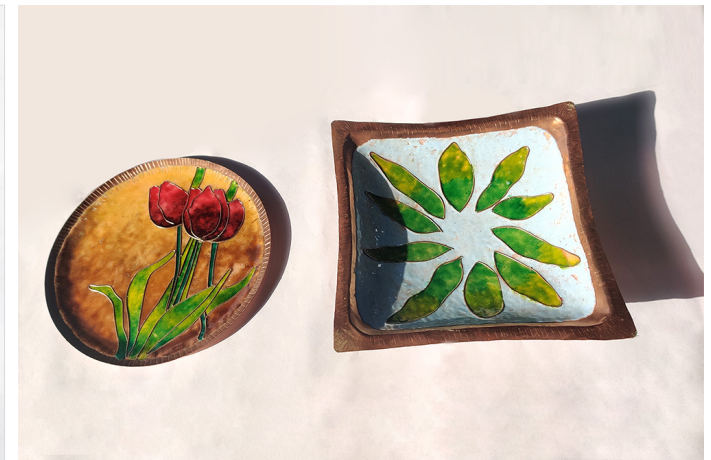


Plate and bowl.

Design Resource

Copper Enamel Arts and Crafts - Alibaug, Maharashtra

An ancient technique of copper embellishment by Sanmati Hosure IDC, IIT Bombay

Source:

<https://www.dsource.in/resource/copper-enamel-arts-and-crafts-alibaug-maharashtra/products>

1. Introduction
2. Artist
3. Tools and Raw Materials
4. Making Process
5. Products
6. Video
7. Contact Details



Plates displayed on the wall of workshop.



Tea coasters.



Tissue paper holder.



Various products displayed on the table.

Design Resource

Copper Enamel Arts and Crafts - Alibaug, Maharashtra

An ancient technique of copper embellishment by

Sanmati Hosure

IDC, IIT Bombay

Source:

<https://www.dsource.in/resource/copper-enamel-arts-and-crafts-alibaug-maharashtra/products>

1. Introduction
2. Artist
3. Tools and Raw Materials
4. Making Process
5. Products
6. Video
7. Contact Details



Wall decorative piece.



Wall hangings.

Design Resource

Copper Enamel Arts and Crafts - Alibaug, Maharashtra

An ancient technique of copper embellishment by Sanmati Hosure IDC, IIT Bombay

Source:

<https://www.dsource.in/resource/copper-enamel-arts-and-crafts-alibaug-maharashtra/video>

Video



Copper Enamel Arts and Crafts - Alibaug, Maharashtra



Copper Enamel Arts and Crafts - Making Process

1. Introduction
2. Artist
3. Tools and Raw Materials
4. Making Process
5. Products
6. Video
7. Contact Details

Design Resource

Copper Enamel Arts and Crafts - Alibaug, Maharashtra

An ancient technique of copper embellishment by

Sanmati Hosure
IDC, IIT Bombay

Source:

<https://www.dsource.in/resource/copper-enamel-arts-and-crafts-alibaug-maharashtra/contact-details>

1. Introduction
2. Artist
3. Tools and Raw Materials
4. Making Process
5. Products
6. Video
7. Contact Details

Contact Details

This documentation and content was done by Sanmati Hosure at IDC, IIT Bombay.

You can get in touch with her at [sanmati29\[at\]gmail.com](mailto:sanmati29[at]gmail.com)

You can write to the following address regarding suggestions and clarifications:

Key Contact:

Mr Sanjay Patil

Copper Enamel Arts and Crafts
Bhaimala Post: Kamarle,
Tal: Alibag Dist: Raigad, India

Mobile: 8149429648

Email: [sppatil58\[at\]gmail.com](mailto:sppatil58[at]gmail.com)

Insta: https://www.instagram.com/copperenamel_artsandcrafts/?igshid=MzNINGNkZWQ4Mg%3D%3D

Helpdesk Details:

Co-ordinator
Project e-kalpa
Industrial Design Centre
IIT Bombay
Powai
Mumbai 4000 076
India

Phone: 091-22-2159 6805/ 091-22-2576 7802

Email: [dsource.in\[at\]gmail.com](mailto:dsource.in[at]gmail.com)