

Design Resource

Nirmal Toys - Telangana

Traditional Wooden Toys

by

Ashoka Chary Maharaj and Prof. Ravi Poovaiah

IDC, IIT Bombay

Source:

<https://www.dsource.in/resource/nirmal-toys-telangana>



1. Introduction
2. Tools and Raw Materials
3. Making Process
4. Products
5. Nirmal Society
6. References
7. Contact Details

Design Resource

Nirmal Toys - Telangana

Traditional Wooden Toys

by

Ashoka Chary Maharaj and Prof. Ravi Poovaiah
IDC, IIT Bombay

Source:

<https://www.dsource.in/resource/nirmal-toys-telangana/introduction>

1. Introduction

2. Tools and Raw Materials

3. Making Process

4. Products

5. Nirmal Society

6. References

7. Contact Details

Introduction

India has a great tradition of making toys with wood. And this toy making is a skilful craft. These toys help a lot to children improve their skills while playing with different play objects. They completely live in a different world while playing with traditional toys. Toys are also used as decorative elements in Indian houses. Most of the houses have a showcase with various toys in Andhra Pradesh.

In Andhra Pradesh apart from Nirmal, other places also do wooden toys such as Etikoppaka and Kondapally. I visited Nirmal to know the toy-making process which are traditional wooden toys beautifully carved by craftsmen. During this project, I learned how the craftsmen make the toys from wood to the final shape.

Nirmal City and Toys

Nirmal is called as the land of toys, this little town of Nirmal is located in the hills and forests of the Adilabad district in the state of Telangana. This little town is known as a leading place for handicrafts on the India map. Nirmal is the land of crafts and craftsmanship. The speciality of this craftsmanship is the utilization of simple articles, which are available locally in abundance.

Simple materials are transformed into exquisite crafts and articles of utility. This art form originated in the 14th Century under the royal patronage of the ruling nobility. Nirmal craftsmen have expertise in wooden engravings. And the uniqueness of Nirmal crafts is that locally available materials are used, the basic material used is wood whether it is furniture, toys, plaques, bangles, or jewellery boxes.

They use Indigenous mineral and vegetable dyes to colour their products. When Nirmal toy crafts first started it was limited in their range. Initially, articles were based on figures and episodes from mythology and were purely art objects. But the dawn of the 17th century saw a new horizon of this art form. The local talent was exploited and articles of utility and decoration started to be manufactured.

History says that the Nizam of Hyderabad was very much inclined by the Nirmal craftsmanship. Once during his visit to Nirmal, Nizam was given a tremendous grand welcome, all the craftsmen indulged themselves in decorating the venue which included an intricately designed banana bud whose petals were coloured gold. This embellishment was suspended above Nizam's seat, which unfurled and showered a cascade of golden-coloured petals on the Nizam.

Keeping pace with the fast-changing trends, Nirmal craftsmen have developed styles to suit the modern taste without moving away from the tradition and intricacy of the art. All these items are contemporary in design.

Design Resource

Nirmal Toys - Telangana

Traditional Wooden Toys

by

Ashoka Chary Maharaj and Prof. Ravi Poovaiah

IDC, IIT Bombay

Source:

<https://www.dsource.in/resource/nirmal-toys-telangana/introduction>

1. Introduction
2. Tools and Raw Materials
3. Making Process
4. Products
5. Nirmal Society
6. References
7. Contact Details



Design Resource

Nirmal Toys - Telangana

Traditional Wooden Toys

by

Ashoka Chary Maharaj and Prof. Ravi Poovaiah

IDC, IIT Bombay

Source:

<https://www.dsource.in/resource/nirmal-toys-telangana/tools-and-raw-materials>

Tools and Raw Materials

Tools and raw materials that are used for making Nirmal Toys are:

- Saw
- Carving Tools
- Iron Files
- Bharsha (wood scalping)
- Sandpaper
- Shaping tool



Saw and carving tools.

1. Introduction

2. Tools and Raw Materials

3. Making Process

4. Products

5. Nirmal Society

6. References

7. Contact Details

Design Resource

Nirmal Toys - Telangana

Traditional Wooden Toys

by

Ashoka Chary Maharaj and Prof. Ravi Poovaiah

IDC, IIT Bombay

Source:

<https://www.dsource.in/resource/nirmal-toys-telangana/tools-and-raw-materials>



Iron files and saw.



Bharsha (wood scalping).



Sandpaper.



Shaping tool.

1. Introduction

2. Tools and Raw Materials

3. Making Process

4. Products

5. Nirmal Society

6. References

7. Contact Details

Design Resource

Nirmal Toys - Telangana

Traditional Wooden Toys

by

Ashoka Chary Maharaj and Prof. Ravi Poovaiah
IDC, IIT Bombay

Source:

<https://www.dsource.in/resource/nirmal-toys-telangana/making-process>

Making Process

The Nirmal toys are made up of locally available “Ponki Chekka” which is very light and flexible and can be cut into desired shapes and sizes depending upon the toy to be made. Then various parts of the toy are glued together by specially prepared glue and coated with “Chinta Lappam”, which is prepared from sawdust and boiled tamarind seeds and coated with white clay, which smoothens any ridges and depressions if any in the toys. The toys are then dried and finally coloured with brilliant colours. Mostly indigenously prepared hues are used for colouring the toys. Very rare and occasional use of synthetic colours is done.

The making of the wall plaques or the artifacts slightly varies from that of making toys. The wood, which is being used here, is teak, which is well-finished on the lathe before painting the predefined design. Then the plaque is sprayed with Duco paint in the desired background colours, the artist then paints the already determined design. The quality of paintings is very high with intricate designs.

Selection of Wood, Cutting and Carving



Ponki Chekka wood pieces.

1. Introduction
2. Tools and Raw Materials
3. Making Process
4. Products
5. Nirmal Society
6. References
7. Contact Details

Design Resource

Nirmal Toys - Telangana

Traditional Wooden Toys

by

Ashoka Chary Maharaj and Prof. Ravi Poovaiah

IDC, IIT Bombay

Source:

<https://www.dsource.in/resource/nirmal-toys-telangana/making-process>



Making skeleton parts.



Cutting the wood in various shapes.



Fixing the skeleton parts.



Craftsman at work.

1. Introduction
2. Tools and Raw Materials
3. Making Process
4. Products
5. Nirmal Society
6. References
7. Contact Details

Design Resource

Nirmal Toys - Telangana

Traditional Wooden Toys

by

Ashoka Chary Maharaj and Prof. Ravi Poovaiah

IDC, IIT Bombay

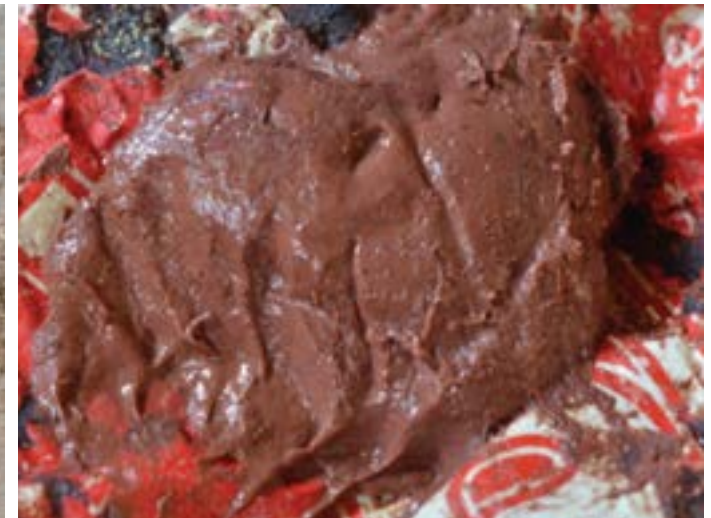
Source:

<https://www.dsource.in/resource/nirmal-toys-telangana/making-process>

Preparing Chinta Lappam



Wood dust.



Dry Tamarind Seed Pulp with water.

1. Introduction

2. Tools and Raw Materials

3. Making Process

4. Products

5. Nirmal Society

6. References

7. Contact Details



Tamarind Seed Pulp.



Making Chinta Lappam.

Design Resource

Nirmal Toys - Telangana

Traditional Wooden Toys

by

Ashoka Chary Maharaj and Prof. Ravi Poovaiah

IDC, IIT Bombay

Source:

<https://www.dsource.in/resource/nirmal-toys-telangana/making-process>

Finishing



Adding chinta lappam to the skeleton.



Rubbing with sandpaper.



Smoothing.



Shaping.



Finishing the toy.



Finished birds.

1. Introduction
2. Tools and Raw Materials
3. Making Process
4. Products
5. Nirmal Society
6. References
7. Contact Details

Design Resource

Nirmal Toys - Telangana

Traditional Wooden Toys

by

Ashoka Chary Maharaj and Prof. Ravi Poovaiah

IDC, IIT Bombay

Source:

<https://www.dsource.in/resource/nirmal-toys-telangana/making-process>

Painting and Coating



Coloring.



Coating the toy.



Coloring.



Coated toy.

1. Introduction
2. Tools and Raw Materials
3. Making Process
4. Products
5. Nirmal Society
6. References
7. Contact Details

Design Resource

Nirmal Toys - Telangana

Traditional Wooden Toys

by

Ashoka Chary Maharaj and Prof. Ravi Poovaiah

IDC, IIT Bombay

Source:

<https://www.dsource.in/resource/nirmal-toys-telangana/products>

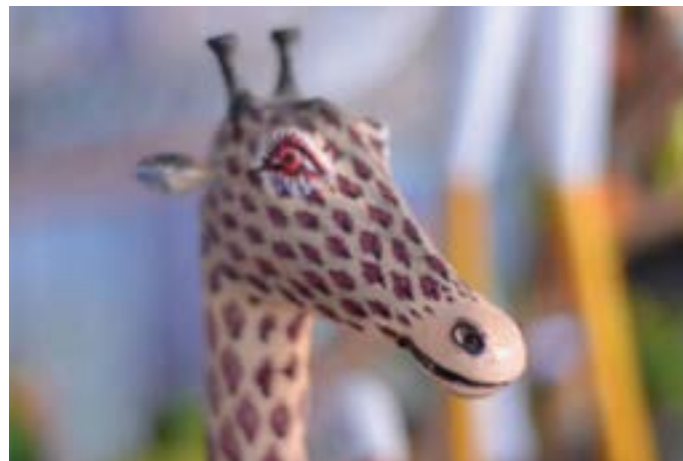
Products



Eagle catching the snake.



Hanging wooden Parrot.



Wooden toy of Giraffe.



Couple of Swan.

1. Introduction
2. Tools and Raw Materials
3. Making Process
4. Products
5. Nirmal Society
6. References
7. Contact Details

Design Resource

Nirmal Toys - Telangana

Traditional Wooden Toys

by

Ashoka Chary Maharaj and Prof. Ravi Poovaiah

IDC, IIT Bombay

Source:

<https://www.dsource.in/resource/nirmal-toys-telangana/products>



Pigeon feeding its baby.



Colorful birds on a tree.



Group of wooden birds.

1. Introduction
2. Tools and Raw Materials
3. Making Process
4. Products
5. Nirmal Society
6. References
7. Contact Details

Design Resource

Nirmal Toys - Telangana

Traditional Wooden Toys

by

Ashoka Chary Maharaj and Prof. Ravi Poovaiah

IDC, IIT Bombay

Source:

<https://www.dsource.in/resource/nirmal-toys-telangana/products>



Tiger toy.



Duck family.



Peacock.

1. Introduction
2. Tools and Raw Materials
3. Making Process
4. Products
5. Nirmal Society
6. References
7. Contact Details

Design Resource

Nirmal Toys - Telangana

Traditional Wooden Toys

by

Ashoka Chary Maharaj and Prof. Ravi Poovaiah

IDC, IIT Bombay

Source:

<https://www.dsource.in/resource/nirmal-toys-telangana/products>



Wooden Birds.



Wooden toy.



Tray containing mouth freshener items.

1. Introduction
2. Tools and Raw Materials
3. Making Process
4. Products
5. Nirmal Society
6. References
7. Contact Details

Design Resource

Nirmal Toys - Telangana

Traditional Wooden Toys

by

Ashoka Chary Maharaj and Prof. Ravi Poovaiah
IDC, IIT Bombay

Source:

<https://www.dsource.in/resource/nirmal-toys-telangana/nirmal-society>

Nirmal Society

The 'Nirmal Industry' has been growing ever since its inception in 1951 in Hyderabad. It has developed Nirmal paintings and handicrafts that command the international market. Nirmal Toys Industrial Cooperative Society is situated on National Highway # 7, which was established in 1955 housing 60 artisans in the main toy-making unit while the Hyderabad branch manufactures furniture and miniature paintings.



Nirmal Toys & Arts Industrial Co-operative Society Ltd.

1. Introduction
2. Tools and Raw Materials
3. Making Process
4. Products
5. Nirmal Society
6. References
7. Contact Details

Design Resource

Nirmal Toys - Telangana

Traditional Wooden Toys

by

Ashoka Chary Maharaj and Prof. Ravi Poovaiah
IDC, IIT Bombay

Source:

<https://www.dsource.in/resource/nirmal-toys-telangana/nirmal-society>

The Craftsmen

All these craftsmen are working in Nirmal Toys and Arts Industrial Co-operative Society Ltd, Nirmal, Adilabad District, Telangana.



B. Narsingam



B. Naresh



R. Narsingrao



K. Lakshminarayana

1. Introduction
2. Tools and Raw Materials
3. Making Process
4. Products
5. Nirmal Society
6. References
7. Contact Details

Design Resource

Nirmal Toys - Telangana

Traditional Wooden Toys

by

Ashoka Chary Maharaj and Prof. Ravi Poovaiah

IDC, IIT Bombay

Source:

<https://www.dsource.in/resource/nirmal-toys-telangana/nirmal-society>



K. Purushotham



R. Srinivas

1. Introduction
2. Tools and Raw Materials
3. Making Process
4. Products
5. Nirmal Society
6. References
7. Contact Details

Design Resource

Nirmal Toys - Telangana

Traditional Wooden Toys

by

Ashoka Chary Maharaj and Prof. Ravi Poovaiah

IDC, IIT Bombay

References

- <http://www.lepakshihandicrafts.gov.in>
- https://en.wikipedia.org/wiki/Nirmal_toys_and_craft
- <https://www.dsource.in/resource/wooden-toys-making-nirmal-telangana>

Source:

<https://www.dsource.in/resource/nirmal-toys-telangana/references>

1. Introduction
2. Tools and Raw Materials
3. Making Process
4. Products
5. Nirmal Society
6. References
7. Contact Details

Design Resource

Nirmal Toys - Telangana

Traditional Wooden Toys

by

Ashoka Chary Maharaj and Prof. Ravi Poovaiah

IDC, IIT Bombay

Source:

<https://www.dsource.in/resource/nirmal-toys-telangana/contact-details>

Contact Details

This documentation and content was done by Ashoka Chary Maharaj at [IDC, IIT Bombay](#).

You can get in touch with him at [sooper35mm\[at\]gmail.com](mailto:sooper35mm[at]gmail.com)

You can write to the following address regarding suggestions and clarifications:

Key Contact:

Ashoka Chary Maharaj

Mobile: +91 9014370460

Email: [sooper35mm\[at\]gmail.com](mailto:sooper35mm[at]gmail.com)

Nirmal Toys & Arts Industrial Co-operative Society Ltd.

Nirmal, Adilabad District,

Telangana.

Phone: 0874-242356

Helpdesk Details:

Co-ordinator

Project e-kalpa

Industrial Design Centre

IIT Bombay

Powai

Mumbai 4000 076

India

Phone: 091-22-2159 6805/ 091-22-2576 7802

Email: [dsource.in\[at\]gmail.com](mailto:dsource.in[at]gmail.com)

1. Introduction

2. Tools and Raw Materials

3. Making Process

4. Products

5. Nirmal Society

6. References

7. Contact Details